

ORIGINAL ARTICLE

Association of a multibiomarker disease activity score at multiple time-points with radiographic progression in rheumatoid arthritis: results from the SWEFOT trial

Karen Hambardzumyan,¹ Rebecca J Bolce,² Saedis Saevarsdottir,^{1,3} Kristina Forslind,^{4,5} Johan K Wallman,⁶ Scott E Cruickshank,⁷ Eric H Sasso,² David Chernoff,² Ronald F van Vollenhoven¹

To cite: Hambardzumyan K, Bolce RJ, Saevarsdottir S, *et al.* Association of a multibiomarker disease activity score at multiple time-points with radiographic progression in rheumatoid arthritis: results from the SWEFOT trial. *RMD Open* 2016;2:e000197. doi:10.1136/rmdopen-2015-000197

► Prepublication history and additional material is available. To view please visit the journal (<http://dx.doi.org/10.1136/rmdopen-2015-000197>).

Received 14 October 2015
Revised 18 January 2016
Accepted 31 January 2016



CrossMark

For numbered affiliations see end of article.

Correspondence to

Dr Karen Hambardzumyan;
karen.hambardzumyan@ki.se

ABSTRACT

Objectives: In rheumatoid arthritis (RA), predictive biomarkers for subsequent radiographic progression (RP) could improve therapeutic choices for individual patients. We previously showed that the multibiomarker disease activity (MBDA) score in patients with newly diagnosed RA identified patients at risk for RP. We evaluated the MBDA score at multiple time-points as a predictor of RP during 2 years of follow-up.

Methods: A subset of patients with RA (N=220) from the Swedish Farmacotherapy (SWEFOT) trial were analysed for MBDA score, disease activity score of 28 joints (DAS28), C reactive protein (CRP) and erythrocyte sedimentation rate (ESR) at baseline (BL), month 3 and year 1, for predicting RP based on modified Sharp/van der Heijde scores at BL, year 1 and year 2.

Results: Patients with persistently low MBDA (<30) scores or those with a decrease from moderate (30–44) to low MBDA scores, did not develop RP during 2 years of follow-up. The highest risk for RP during 2 years of follow-up (42%) was observed among patients with persistently high (>44) MBDA scores. Among methotrexate non-responders with a high MBDA score at BL or month 3, significantly more of those who received triple therapy had RP at year 2 compared with those who received antitumour necrosis factor therapy.

Conclusions: Measuring the MBDA score both before and during treatment in RA was useful for the assessment of individual patient risk for RP during 2 years of follow-up. In comparison with low CRP, ESR or DAS28, a low MBDA score at any time-point was associated with numerically lower proportions of RP.

Trial registration number: NCT00764725.

INTRODUCTION

In rheumatoid arthritis (RA), early therapeutic intervention increases the chances of achieving better clinical and radiographic

Key messages

- A low multibiomarker disease activity (MBDA) score at baseline was associated with a very low risk of radiographic progression (RP).
- Achievement of a low MBDA score at later time-points also was associated with low risk of RP.
- Among patients with low C reactive protein or erythrocyte sedimentation rate, the majority had high/moderate MBDA score and a substantial proportion had RP.
- Combination of MBDA score at multiple time-points may help choose optimal therapy, since patients with a high MBDA score might be better protected from RP while using biologics compared with patients having a low/moderate MBDA score.

outcomes.^{1–2} However, radiographic progression (RP) is not always associated with clinically severe signs and symptoms.^{3–7} Early identification of patients at a risk for RP would be beneficial for the optimal therapy choice leading to prevention of RP.

There are several factors reported to be independent predictors of RP, including biomarkers (anticyclic citrullinated peptide (anti-CCP) autoantibody status, erythrocyte sedimentation rate (ESR), C reactive protein (CRP)), radiographic destruction at baseline (BL) (bone erosions and joint space narrowing) and smoking status.^{8–19}

The multibiomarker disease activity (MBDA) score (Vectra DA) is an RA disease activity measure based on serum concentrations of 12 protein biomarkers.^{20–21} In established RA, limited RP has been reported among patients in remission according to

the MBDA score, while those with high (>44) MBDA score, despite being in remission according to the disease activity score of 28 joints based on CRP (DAS28-CRP) or to the American College of Rheumatology and European League Against Rheumatism (ACR/EULAR) criteria, were found to be at significantly higher risk.²²

Using data from the Swedish FarmacoTherapy (SWEFOT) clinical trial^{23 24} of early RA (eRA), we have previously shown that BL MBDA score, taken before the initiation of disease-modifying anti-rheumatic drugs (DMARDs), could define patients who were at very low versus higher risk of rapid RP (RRP) during 1 year of follow-up.²⁵ However, patients for whom screening with biomarkers is of interest are not necessarily DMARD naïve.

Thus, we further studied the MBDA score, CRP, ESR and DAS28 at multiple time-points in a subset of patients from the SWEFOT trial, to evaluate these measures as predictors of high versus low risk of subsequent RRP in RA patients.

METHODS

Study population

Overall, 487 patients with eRA were recruited to the SWEFOT trial,²³ with age ≥ 18 years, symptom duration <1 year and DAS28 >3.2. After 3 months of methotrexate (MTX) monotherapy, responders (DAS28 ≤ 3.2) continued the treatment and non-responders (DAS28 >3.2) were randomly assigned to receive (1) non-biological (MTX+sulfasalazine (SSZ)+hydroxychloroquine (HCQ)) DMARD triple therapy (TT) or (2) in addition to MTX, biological (antitumour necrosis factor (anti-TNF): infliximab) therapy. The analyses of RP from BL to year 1 and to year 2 for this study were performed on a subset of 220 patients with eRA for whom the MBDA scores, CRP, ESR and DAS28 were available at BL. Of the 220 patients, data on these four disease activity measures at month 3 and year 1 were available for 205 and 133 patients, respectively. From the study subset, 76 patients responded to MTX monotherapy and 144 were randomised to the TT (n=73) or anti-TNF (n=71) treatment arms. The SWEFOT study was approved by regional ethics committees of all participating units.

Disease outcomes

The categorisation of disease activity at BL, month 3 and year 1 by DAS28 and CRP, was as follows: for DAS28, EULAR cut-offs were used—low ≤ 3.2 , moderate >3.2–5.1 and high >5.1²⁶; for CRP, low ≤ 10 mg/L, moderate >10–30 mg/L and high >30 mg/L.²⁷ As there is no defined threshold value for categorisation of disease activity according to ESR, tertiles at BL were used: low ≤ 26 mm/h, moderate 27–45 mm/h and high >45 mm/h. The modified Sharp/van der Heijde scores (SHSs)²⁸ from radiographs of hands and feet were evaluated (by 2 certified assessors) at BL, year 1 and year 2, and patients with

an increase of the SHS at any subsequent time-point by >5 (Δ SHS>5) were considered as RRP.^{29 30} In addition, we analysed a threshold defined for clinically relevant RP (CRRP, (Δ SHS>3)).³¹

Biomarker measurement and the MBDA score

The biomarkers were measured by Crescendo Bioscience (South San Francisco, California, USA). The following 12 biomarkers were used for calculation of the MBDA score: vascular cell adhesion molecule 1, epidermal growth factor, vascular endothelial growth factor, interleukin 6, TNF receptor 1, matrix metalloproteinases 1 and 3, cartilage glycoprotein 39 (YKL-40), leptin, resistin, serum amyloid A and CRP. The biomarkers were measured by electrochemiluminescence-based multiplex immunoassay on the Meso Scale Discovery Multi-Array platform.³² The MBDA score was calculated using the Vectra DA algorithm; it has a scale from 1 (lowest disease activity) to 100 (highest disease activity). Threshold values of MBDA score grouped patients into three disease activity categories: low <30, moderate 30–44 and high >44.^{21 22}

Statistical analyses

BL characteristics and demographic data were analysed by descriptive statistics. The comparison of these data between RRP and non-progressors was carried out using the Mann-Whitney U test. Proportions of patients with RRP between the TT and anti-TNF therapy arms (among MTX non-responders) as well as among patients with low, moderate or high disease activity categories, were evaluated by χ^2 test or, in case of limited sample size, Fisher's Exact test. The Δ SHS values among patients with low, moderate or high disease activity categories according to MBDA score, CRP and DAS28, were compared using the Kruskal-Wallis test. The data were analysed using IBM SPSS Statistics software V.22.

RESULTS

BL characteristics

BL characteristics and demographic data of the 220 patient subset with available samples for biomarker analyses were similar to the whole SWEFOT cohort (table 1). As expected from our previous studies on predictors of RP, ESR, CRP and MBDA, scores were significantly higher at BL in patients with RRP at year 1 versus those without RRP, whereas no significant difference was detected regarding DAS28 (table 1 and figure 1), Clinical Disease Activity Index (CDAI) or Simplified Disease Activity Index (SDAI) (figure 1). Similar results were found based on 2-year radiographic data (results not shown).

Relationship of disease activity categories at different time-points with frequency of RRP

Proportions of patients with subsequent RRP (BL–year 2 and year 1–2) were compared among patients with low, moderate or high disease activity according to the

Table 1 Baseline characteristics and demographic data of patients from the SWEFOT trial

Baseline characteristics: mean (±SD)	All patients (N=487)*	Subset of patients with radiographs and clinical measures at baseline and 1 year			p Value (progression vs no progression)
		Radiographic subset (N=220)	Radiographic subset with progression (ΔSHS>5) (n=41)	Radiographic subset without progression (ΔSHS≤5) (n=179)	
Female: N (%)	344 (70)	156 (71)	30 (73)	126 (70)	0.724
Symptom duration (months)	6.2 (4.6)	5.9 (3.2)	6.5 (3.6)	5.7 (3.1)	0.249
Anti-CCP status: N (%)					0.073
Positive	275 (57)	126 (57)	29 (71)	97 (54)	
Negative	157 (32)	84 (38)	11 (27)	73 (41)	
Not available	55 (11)	10 (5)	1 (2)	9 (5)	
RF status: N (%)					0.118
Positive	330 (68)	142 (65)	31 (76)	111 (62)	
Negative	152 (31)	76 (34)	10 (24)	66 (37)	
Not available	5 (1)	2 (1)	0 (0)	2 (1)	
28 Swollen joint count	10.8 (5.3)	10.8 (5.4)	10.0 (5.4)	10.7 (5.4)	0.809
28 Tender joint count	9.6 (6.1)	9.3 (5.9)	8.8 (5.2)	9.5 (6.0)	0.775
ESR (mm/h)	39.9 (25.9)	41.2 (26.9)	52.6 (33.5)	38.5 (24.5)	0.028
CRP level (mg/L)	33.8 (36.8)	34.5 (36.9)	46.2 (43.7)	31.8 (34.7)	0.049
Patient's Global Assessment of Disease Activity (VAS 0–100 mm) score	56 (23.9)	55.8 (24.8)	63.4 (21.0)	54.1 (25.3)	0.053
DAS28	5.7 (1.0)	5.7 (1.0)	5.9 (1.2)	5.7 (1.0)	0.136
MBDA score	58.6 (15.1)	59.3 (14.7)	66.7 (12.3)	57.6 (14.8)	0.001
SHS mean (median)	4.5 (2)	4.9 (2)	6.8 (3)	4.5 (1)	0.039

*Number of missing patients for 'All patients' column: 28 swollen and tender joint count (n=2), ESR (n=5), CRP and Patient's Global Assessment (n=3), DAS28 (n=8), MBDA (n=185) and SHS (n=57).

anti-CCP, anticyclic citrullinated peptide; CRP, C reactive protein; DAS, disease activity score; ESR, erythrocyte sedimentation rate; MBDA, multibiomarker disease activity; RF, rheumatoid factor; SHS, Sharp/van der Heijde score; VAS, visual analogue scale.

MBDA score, CRP, ESR or DAS28 at month 3 or year 1 (figure 2). The categorisation of patients by MBDA score, CRP and ESR at month 3 showed a significant difference in the proportion of RRP during 2-year follow-up ($p=0.002$, $p=0.003$ and $p=0.002$, respectively; figure 2A); while the same was not true for DAS28 ($p=0.333$). When assessed at year 1, all these four disease activity markers showed a significantly different proportion of patients with subsequent RRP from year 1 to 2 ($p<0.001$, $p=0.008$, $p=0.004$ and $p=0.005$, respectively; figure 2B). The categories of the MBDA score showed similar results when $\Delta\text{SHS}>3$ cut-off was used for CRRP (see online supplementary figure S1).

Relationship of disease activity categories at different time-points with the change of the SHS

The changes of SHS (ΔSHS) from BL to year 1 and to year 2 as well as from year 1 to 2 were compared among RA patients with low, moderate or high disease activity categories according to the MBDA score, CRP and DAS28 at month 3 ($n=205$) and year 1 ($n=133$; table 2). The ΔSHS was significantly different across low/moderate/high categories of the MBDA score and CRP, at month 3 and year 1, while no significant differences

were observed across DAS28 categories (table 2A). When compared among patients within the same categories of different disease activity measures (table 2B), patients with a low MBDA score at month 3 had significantly lower ΔSHS from BL to year 1 (0.5) than those with low CRP (2.2) or low DAS28 (2.2), $p=0.029$, and significantly lower ΔSHS from BL to year 2 (1.5, 3.5 and 3.7, respectively; $p=0.037$). Patients with moderate MBDA score at year 1 had significantly lower ΔSHS (1.0) during the subsequent year than those with moderate CRP (4.1) or DAS28 (1.9); $p=0.048$. In the rest of the cases, patients with low or moderate MBDA scores at any time-point had numerically but not significantly lower ΔSHS during the subsequent year compared with those having a low or moderate CRP or DAS28. And there was no significant difference in ΔSHS among patients with a high MBDA score, CRP or DAS28 (table 2B).

Relation of the MBDA score categories with those of CRP and ESR, and RRP

When stratified across low/moderate/high categories of CRP, ESR or DAS28, all 33 patients with a low MBDA scores at month 3 also had low CRP and low ESR, with the exception of 1 patient with moderate ESR, and 17

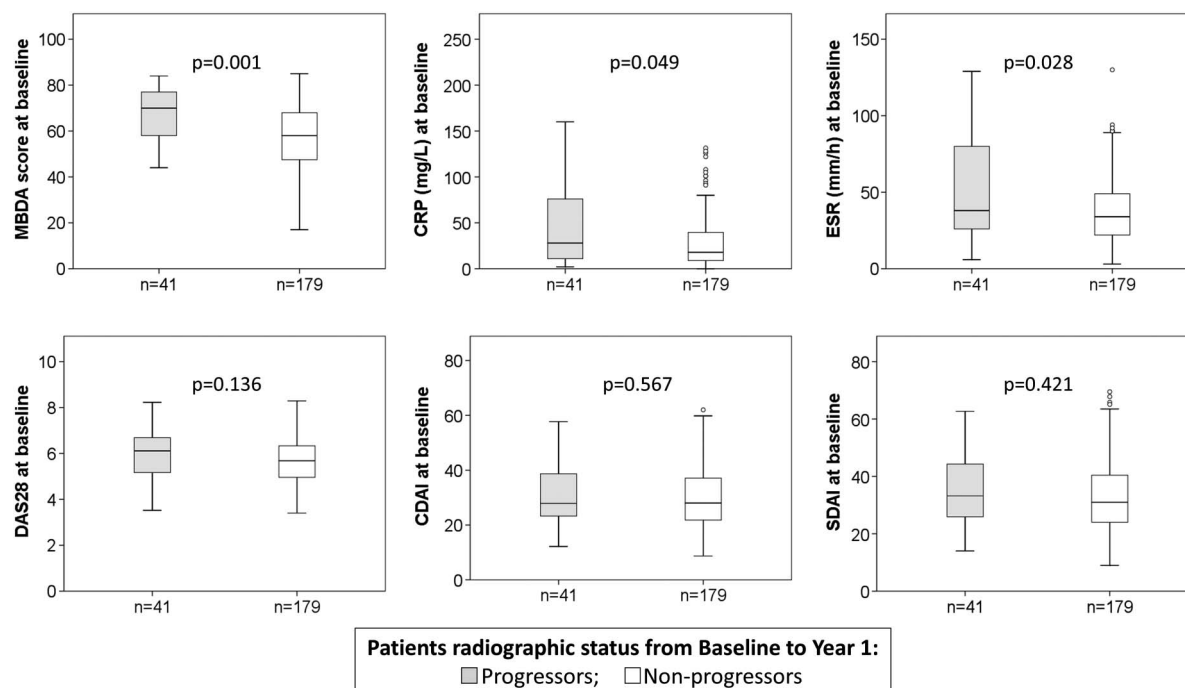


Figure 1 Distribution of disease activity measures among radiographic progressors (Δ Sharp/van der Heijde score (Δ SHS) >5) and non-progressors (Δ SHS ≤ 5). Multibiomarker disease activity (MBDA) score, C reactive protein (CRP), erythrocyte sedimentation rate (ESR), disease activity score of 28 joints (DAS28), Clinical Disease Activity Index (CDAI) and Simplified Disease Activity Index (SDAI) at baseline among patients with radiographic progression (grey boxes) and without progression (white boxes) from baseline to year 1.

had low DAS28 (figure 2A). Of these 33 patients, only 3 had RRP at year 2. In contrast, among patients with low CRP, ESR or DAS28 at month 3, the majority had a moderate/high MBDA score, and 23%, 24% and 24% of them, respectively, had RRP at year 2 (figure 2A). Of these patients with RRP, only three had a low MBDA score. Among patients with a low MBDA score at year 1 (n=60), 1 had moderate CRP, 4 had moderate ESR, 20 had moderate DAS28 and 1 had high DAS28 (figure 2B). Of these 60 patients, only 2 (3%) had RRP from year 1 to 2. In contrast, among patients with low CRP (n=112), low ESR (n=101) or low DAS28 (n=66) at year 1, almost half had a moderate/high MBDA score, and of the 9% with low CRP who had RRP from year 1 to 2, only two patients had a low MBDA score.

Association of conversions in MBDA score categories with subsequent RRP

Changes of disease activity category (low, moderate and high) according to the MBDA scores, CRP or ESR from BL to month 3 or to year 1 were analysed versus subsequent RRP (from BL to year 1 and from year 1 to 2, respectively; figure 3). For the five patients with low MBDA scores at BL, all five remained low at month 3 (figure 3A, left bar graph), as did the four with available MBDA data at year 1 (figure 3B, left bar graph) and none had RRP over the 2 years of follow-up. Likewise, none of the patients who shifted from a moderate MBDA score at BL to low at month 3 or year 1

progressed radiographically during the subsequent 1 year. In contrast, the highest proportion of patients with RRP was detected among patients with a high MBDA score at BL that remained high at month 3 or year 1. Those whose MBDA scores had decreased from a high to a low category at month 3 or to low/moderate at year 1, had significantly lower frequencies of RRP compared with those whose MBDA score remained at high levels at these time-points (figure 3A, B left bar graphs). In contrast, patients who remained with low disease activity at month 3 or year 1 according to CRP or ESR (figure 3A, B, middle and right bar graphs, respectively) still had some occurrence of RRP. Patients who shifted to low CRP or ESR at month 3 or year 1 had a 3–24% risk of RRP over the subsequent year, with the exception of patients decreasing from moderate to low levels of ESR at year 1, who did not develop RRP over the following year (figure 3B, right bar graph).

In general, when using the MBDA score at a single time-point, comparison of low/moderate versus high MBDA scores at BL and at year 1 was the most optimal grouping for discrimination of patients at low versus higher risk of RRP during the following year, whereas at month 3, low versus moderate/high grouping was better (figure 3 and online supplementary table S1). When using the MBDA score at single time points for evaluation of RRP from BL to year 1, both BL and month 3 data were equally predictive for a subset at low risk of RRP. Of patients with a low/moderate MBDA score at

A Proportion of 2 years radiographic progressors cross-classified by 3m categories of MBDA score against 3m categories of CRP, ESR or DAS28				
MBDA at Month 3	Clinical CRP at Month 3			Total
	Low (≤10)	Moderate (>10 - 30)	High (>30)	
Low (<30)	3/33	0	0	3/33
Moderate (30 - 44)	20/78	1/3	0/1	21/82
High (>44)	11/36	15/35	11/19	37/90
Total	34/147	16/38	11/20	p=0.002 p=0.003
MBDA at Month 3	ESR at Month 3			Total
	Low (≤26)	Moderate (>26 - 45)	High (>45)	
Low (<30)	3/32	0/1	0/0	3/33
Moderate (30 - 44)	19/67	2/14	0/1	21/82
High (>44)	10/36	14/34	13/20	37/90
Total	32/135	16/49	13/21	p=0.002 p=0.002
MBDA at Month 3	DAS28 at Month 3			Total
	Low (≤3.2)	Moderate (>3.2 - 5.1)	High (>5.1)	
Low (<30)	3/17	0/14	0/2	3/33
Moderate (30 - 44)	9/35	10/38	2/9	21/82
High (>44)	5/20	16/30	16/40	37/90
Total	17/72	26/82	18/51	p=0.002 p=0.333
B Proportion of radiographic progressors (Year 1 to Year 2) cross-classified by 1 year categories of MBDA score against 1 year categories of CRP, ESR or DAS28				
MBDA at Year 1	Clinical CRP at Year 1			Total
	Low (≤10)	Moderate (>10 - 30)	High (>30)	
Low (<30)	2/59	0/1	0	2/60
Moderate (30 - 44)	2/32	1/4	0	3/36
High (>44)	6/21	3/9	3/7	12/37
Total	10/112	4/14	3/7	p<0.001 p=0.008
MBDA at Year 1	ESR at Year 1			Total
	Low (≤26)	Moderate (>26 - 45)	High (>45)	
Low (<30)	0/56	2/4	0/0	2/60
Moderate (30 - 44)	3/25	0/10	0/1	3/36
High (>44)	5/20	3/9	4/8	12/37
Total	8/101	5/23	4/9	p<0.001 p=0.004
MBDA at Year 1	DAS28 at Year 1			Total
	Low (≤3.2)	Moderate (>3.2 - 5.1)	High (>5.1)	
Low (<30)	1/39	1/20	0/1	2/60
Moderate (30 - 44)	2/18	0/15	1/3	3/36
High (>44)	1/9	7/19	4/9	12/37
Total	4/66	8/54	5/13	p<0.001 p=0.005

Figure 2 Proportion of radiographic progressors in patients with rheumatoid arthritis during 2 years follow-up according to categories of multibiomarker disease activity (MBDA) score, C reactive protein (CRP), erythrocyte sedimentation rate (ESR) and disease activity score of 28 joints (DAS28) at multiple time-points. The proportion of radiographic progression (RP) (A) at year 2 in patients whose 3-month categories of MBDA score are cross classified versus CRP, ESR and DAS28 at month 3 and (B) from year 1 to 2 in patients whose 1 year categories of MBDA score are cross-classified versus categories of CRP, ESR or DAS28 at year 1.

BL (n=33) or with a low MBDA score at month 3 (n=33), only one had RRP at year 1. Combination of these two time-points, however, allowed an increase in sample size of the patients at low risk of RRP, that is, of the patients with a low/moderate MBDA score at BL, or those whose MBDA score dropped from high at BL to low at month 3 (n=50), only two patients had RRP at year 1 (figure 3 and online supplementary table S1).

Evaluation of the MBDA score at BL, month 3 and year 1 for prediction of RRP during the second year of follow-up (from year 1 to 2) revealed that the latest time-point (year 1) was the best single time-point for identification of a subgroup of patients at very low risk of RRP (5 of 87). Combination of two time-points (change of the MBDA categories from BL to year 1 or from month 3 to year 1) slightly increased the sample size of patients who were identified to be at very low risk of RRP. Thus, 5 of 90 patients who had a low/moderate MBDA score at BL or whose score decreased from high at BL to low/

moderate at year 1, had RRP. When considering change of the MBDA categories from month 3 to year 1: 5 of 88 patients who had a low MBDA score at month 3 or decreased MBDA score from high (month 3) to low/moderate (year 1) or had persistent moderate MBDA score, had RRP from year 1 to 2 (see online supplementary table S1).

RRP in triple versus anti-TNF therapy arms and its relation to MBDA score categories

In this study, patients categorised by the MBDA score (low, moderate and high) within each therapy group (TT, anti-TNF and MTX monotherapy) had similar patterns for the risk of RRP during the subsequent year as if looked at all therapy groups together (results not shown). As has been previously reported, in the SWEFOT trial, there was a significantly higher proportion of RRP over 2 years in the TT group as compared with patients randomised to anti-TNF therapy.²⁴ When

Table 2 The change of SHS from BL to year 1 and year 2, and from year 1 to 2, among early RA patients with low, moderate and high MBDA scores, CRP and DAS28 at multiple time-points

Disease activity time-point	Time-period for Δ SHS	Δ SHS mean (median)						CRP (mg/L)						DAS28					
		MBDA score			CRP			Low			Moderate			High			Low		
		Low	Moderate	High	Low	Moderate	High	Low	Moderate	High	Low	Moderate	High	Low	Moderate	High	Low	Moderate	High
		(<30)	(30–44)	(>44)	(≤10)	(10–30)	(>30)	(≤3.2)	(3.2–5.1)	(>5.1)	(≤3.2)	(3.2–5.1)	(>5.1)	(≤3.2)	(3.2–5.1)	(>5.1)	(≤3.2)	(3.2–5.1)	(>5.1)
Panel (A)	Month 3	0.5 (0)	2.4 (1)	4.8 (3)	2.2 (0)	4.0 (3)	8.2 (4.5)	0.004	2.2 (0.5)	2.7 (1)	0.004	2.2 (0.5)	2.7 (1)	0.004	2.2 (0.5)	2.7 (1)	0.004	2.2 (0.5)	2.7 (1)
	BL–year 1 (n=205)	0.5 (0)	2.4 (1)	4.8 (3)	2.2 (0)	4.0 (3)	8.2 (4.5)	0.004	2.2 (0.5)	2.7 (1)	0.004	2.2 (0.5)	2.7 (1)	0.004	2.2 (0.5)	2.7 (1)	0.004	2.2 (0.5)	2.7 (1)
	BL–year 2 (n=205)	1.5 (0)	3.6 (2)	7.2 (4.5)	3.5 (1)	6.1 (4.5)	12.3 (6)	<0.001	3.5 (1)	6.1 (4.5)	<0.001	3.5 (1)	6.1 (4.5)	<0.001	3.5 (1)	6.1 (4.5)	<0.001	3.5 (1)	6.1 (4.5)
Panel (B)	Year 1	0.5 (0)	1.0 (0)	4.7 (3.0)	1.1 (0)	4.1 (2.5)	8.7 (3)	0.024	0.8 (0)	1.9 (0)	0.024	0.8 (0)	1.9 (0)	0.024	0.8 (0)	1.9 (0)	0.024	0.8 (0)	1.9 (0)
	Year 1–2 (n=133)	0.5 (0)	1.0 (0)	4.7 (3.0)	1.1 (0)	4.1 (2.5)	8.7 (3)	0.024	0.8 (0)	1.9 (0)	0.024	0.8 (0)	1.9 (0)	0.024	0.8 (0)	1.9 (0)	0.024	0.8 (0)	1.9 (0)
	Year 1–2 (n=133)	0.5 (0)	1.0 (0)	4.7 (3.0)	1.1 (0)	4.1 (2.5)	8.7 (3)	0.024	0.8 (0)	1.9 (0)	0.024	0.8 (0)	1.9 (0)	0.024	0.8 (0)	1.9 (0)	0.024	0.8 (0)	1.9 (0)
Panel (B)	Month 3	0.5 (0)	2.2 (0)	2.2 (0.5)	2.4 (1)	4.0 (3)	2.7 (1)	0.665	4.8 (3)	8.2 (4.5)	0.665	4.8 (3)	8.2 (4.5)	0.665	4.8 (3)	8.2 (4.5)	0.665	4.8 (3)	8.2 (4.5)
	BL–year 1 (n=205)	0.5 (0)	2.2 (0)	2.2 (0.5)	2.4 (1)	4.0 (3)	2.7 (1)	0.665	4.8 (3)	8.2 (4.5)	0.665	4.8 (3)	8.2 (4.5)	0.665	4.8 (3)	8.2 (4.5)	0.665	4.8 (3)	8.2 (4.5)
	BL–year 2 (n=205)	1.5 (0)	3.5 (1)	3.7 (1)	3.6 (2)	6.1 (4.5)	3.9 (2)	0.336	7.2 (4.5)	12.3 (6)	0.336	7.2 (4.5)	12.3 (6)	0.336	7.2 (4.5)	12.3 (6)	0.336	7.2 (4.5)	12.3 (6)
Panel (B)	Year 1	0.5 (0)	1.1 (0)	0.8 (0)	1.0 (0)	4.1 (2.5)	1.9 (0)	0.048	4.7 (3.0)	8.7 (3)	0.048	4.7 (3.0)	8.7 (3)	0.048	4.7 (3.0)	8.7 (3)	0.048	4.7 (3.0)	8.7 (3)
	Year 1–2 (n=133)	0.5 (0)	1.1 (0)	0.8 (0)	1.0 (0)	4.1 (2.5)	1.9 (0)	0.048	4.7 (3.0)	8.7 (3)	0.048	4.7 (3.0)	8.7 (3)	0.048	4.7 (3.0)	8.7 (3)	0.048	4.7 (3.0)	8.7 (3)
	Year 1–2 (n=133)	0.5 (0)	1.1 (0)	0.8 (0)	1.0 (0)	4.1 (2.5)	1.9 (0)	0.048	4.7 (3.0)	8.7 (3)	0.048	4.7 (3.0)	8.7 (3)	0.048	4.7 (3.0)	8.7 (3)	0.048	4.7 (3.0)	8.7 (3)

p Values defined by Kruskal-Wallis test.

BL, baseline; CRP, C reactive protein; MBDA, multibiomarker disease activity; RA, rheumatoid arthritis; SHS, Sharp/van der Heijde score.

considering MBDA score categories, the proportions of RRP in the MTX non-responders with a low/moderate MBDA score were not statistically significantly different between the TT and anti-TNF treatment arms (figure 4). However, patients with a high MBDA score at BL or month 3 had a significantly higher proportion of RRP at year 2 in the TT group, compared with the anti-TNF group (45% vs 25%, $p=0.022$ and 57% vs 32%, $p=0.038$, respectively; figure 4A, left and middle bar graphs); and a numerically but not significantly greater rate of RRP (year 1 to 2) in the triple versus anti-TNF-treated patients with a high MBDA score at year 1 (figure 4A, right bar graph). When using Δ SHS>3 as a definition of CRRP, patients with high MBDA scores in the TT arm had a numerically higher proportion of CRRP than those in the anti-TNF therapy group (figure 4B). Patients with high CRP at BL, month 3 or year 1 did not differ significantly in proportion or RRP among TT and anti-TNF treated groups (see online supplementary figure S2).

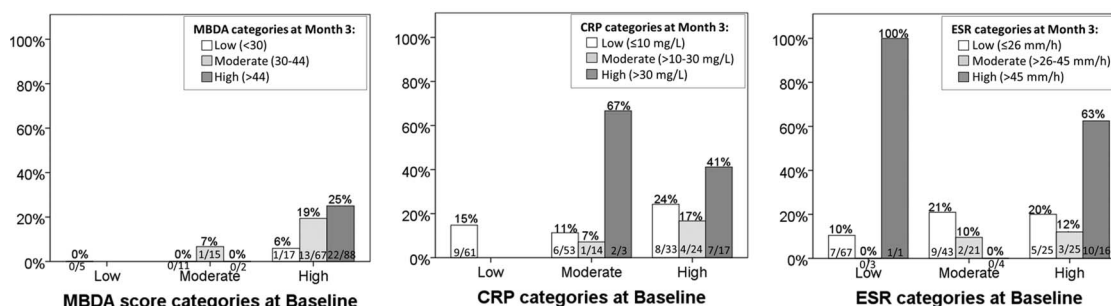
DISCUSSION

In this study on patients with eRA who participated in the SWEFOT trial, the 12 serum biomarker-based MBDA score at BL, month 3 and year 1 was associated with the status of subsequent RRP. Thus, having a low MBDA score at BL, or a score reducing to a low level at any of the later time-points, was associated with a lower risk of subsequent RRP. Furthermore, numerically smaller proportions of RRP were observed among patients with a low MBDA score as compared with patients having low CRP, ESR or DAS28 at the respective time-points.

These results confirm and extend previously published findings. During development of the MBDA score, Centola *et al*²⁰ demonstrated (using data from multiple clinical cohorts) that scores based on those candidate biomarkers at BL and year 1 were correlated with subsequent change of SHS from BL to year 1 and from year 1 to 2, respectively. Van der Helm-van Mil *et al*²² showed that patients in remission according to the MBDA score had a lower risk of RP, compared with those in remission according to DAS28-CRP or ACR/EULAR criteria. In contrast, Bakker *et al* could not show BL MBDA scores to significantly predict RP over 2 years in the CAMERA trial. After inclusion of rheumatoid factor and BL erosions in multivariate logistic regression analyses, however, the MBDA score at BL, but not DAS28-CRP, achieved borderline significance.³³

In our previous study based on this trial, we demonstrated the independent predictive ability of the MBDA score at BL for subsequent 1 year RRP.²⁵ This result posed a question concerning the role of the MBDA score in patients with RA whose disease (and MBDA score) is already affected by treatment. Therefore, here we assessed the predictive capacity of the MBDA score at month 3 (patients on MTX monotherapy) for RRP from

A Proportion of rapid radiographic progressors (Δ SHS>5) from Baseline to Year 1



B Proportion of rapid radiographic progressors (Δ SHS>5) from Year 1 to Year 2

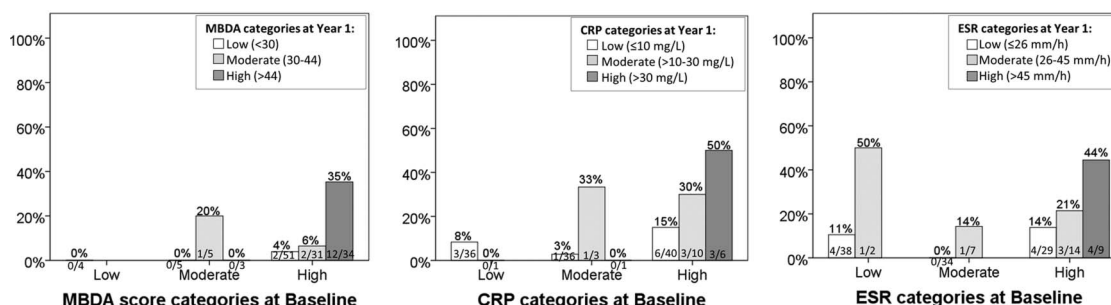


Figure 3 Association of radiographic progression with change in disease activity categories according to the MBDA score, CRP and ESR. Change in categories according to MBDA score, CRP or ESR (A) from BL to month 3 and radiographic progression from BL to year 1, and (B) from BL to year 1 and radiographic progression from year 1 to 2. BL, baseline; CRP, C reactive protein; ESR, erythrocyte sedimentation rate; MBDA, multibiomarker disease activity; SHS, Sharp/van der Heijde score.

BL to year 1 and year 2, as well as at year 1 (MTX non-responders, either on TT or on anti-TNF therapy) as a predictor of RRP from year 1 to 2. DAS28, CRP and ESR were studied in parallel with the MBDA scores from each time-point.

In this study, the proportions of patients with RRP during the first and second years as well as the 1-year change in SHS from BL differed significantly between patients with low/moderate/high MBDA scores or CRP at month 3 or year 1 (figure 2 and table 2). In order to elucidate the objectiveness of cut-off values for MBDA and CRP, the data on Δ SHS was plotted against MBDA score, CRP and ESR values (see online supplementary figure S3). This figure illustrates that some patients at very low CRP levels at all three time-points have RRP over 2 years, while those with low or moderate MBDA scores have lower proportions with RRP. Moreover, when comparing proportions of patients with RRP from BL to year 2 between the TT and anti-TNF treated groups, patients with a high MBDA score at BL or month 3 differed significantly, whereas those with high CRP did not (see figure 4 and online supplementary figures S2). Although using Δ SHS>3 cut-off did not show a significantly, but only numerically, higher proportion of patients with CRRP in the TT versus anti-TNF therapy group (figure 4B), when comparing all patients together, the associations of the MBDA score categories with risk of CRRP were similar to the association with RRP using Δ SHS>5 cut-off (see online supplementary figure S1).

When comparing predictive ability of the MBDA score at different time-points, we noticed that combination of the MBDA score from BL and month 3 substantially improved the identification of patients at a low risk of RRP during the first year of the trial compared with single time-points, due mainly to an increase in the sample size from $n=33$ to $n=50$ (see online supplementary table S1). As for the prediction of RRP during the second year of follow-up, year 1 was the best single time-point for identification of patients at a low risk of RRP. Simultaneous use of the MBDA score from BL and year 1 or from month 3 and year 1 slightly increased the sample size of this subset of patients (from 87, to 90 and 88, respectively).

One of the limitations of this study is that it was based on one cohort, which was not a full representation of the RA population. However, the SWEFOT trial was designed to include a real-life eRA population. Another limitation was that the MTX responder population lacked MBDA data at year 1, which limited our ability to perform analyses. Next, because of the lack of information about cut-offs for CRP and ESR categories, we had to use non-validated cut-offs for CRP and tertiles for ESR in order to define low/moderate/high levels of disease activity. This makes the comparison with MBDA score more limited and the health-economic point of view cannot be evaluated. Changes in the treatment of patients from different arms could affect the radiographic outcome. And, finally, in comparison of proportion of RRP within each therapy group, some subgroups

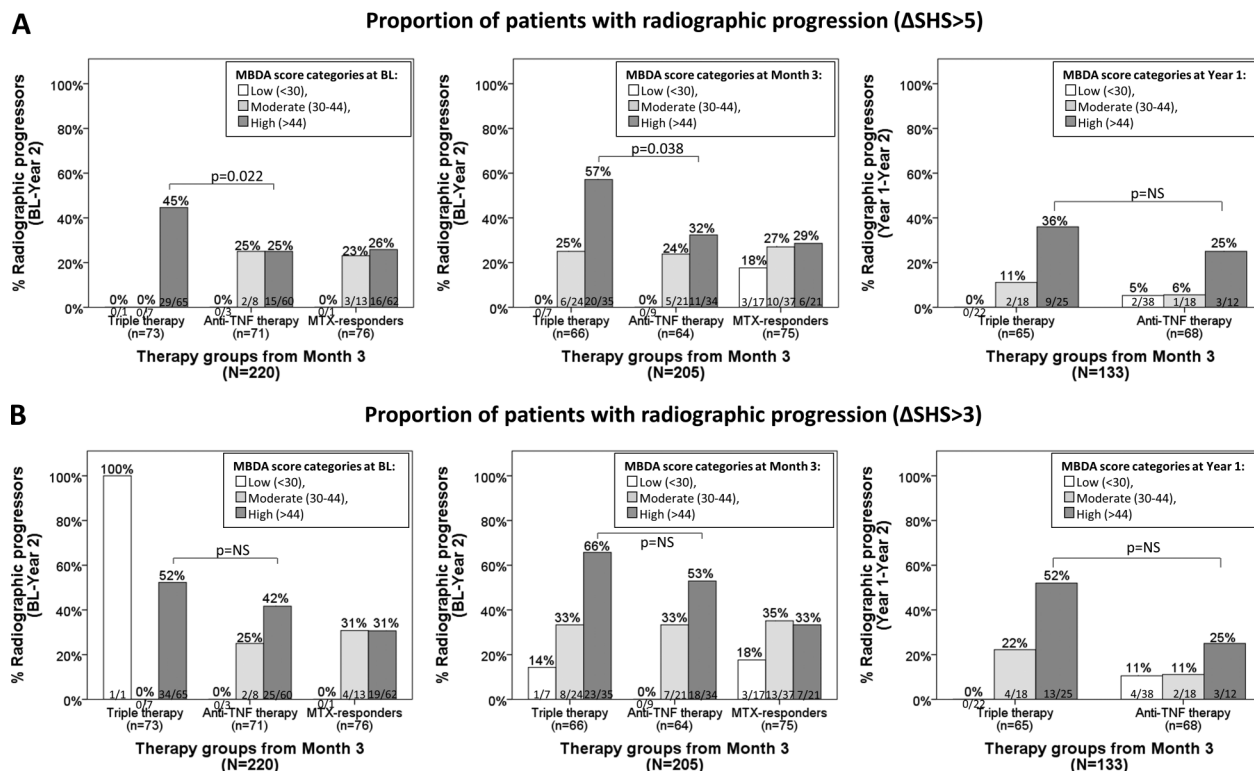


Figure 4 Radiographic progression among three therapy groups (triple therapy group, anti-TNF treatment group and MTX responders) stratified by MBDA categories at multiple time-points. Proportion of patients with radiographic progression defined as (A) Δ SHS>5 and (B) Δ SHS>3. Left and middle bar graphs represent proportion of patients with 2-year radiographic progression stratified by the MBDA score at BL and month 3, respectively. Right bar graph shows radiographic progression from year 1 to 2 among patients stratified by the MBDA score at year 1. BL, baseline; MBDA, multibiomarker disease activity; MTX, methotrexate; NS, not significant; SHS, Sharp/van der Heijde score; TNF, tumour necrosis factor.

of patients are very small. Considering this and the fact of multiple testing, the results of significant difference of proportions of RRP between TT and anti-TNF therapy groups need to be confirmed.

The strength of this study is the availability of data from multiple time-points, which provides a more comprehensive evaluation of the MBDA score as a predictor of RRP at the onset of the disease, and also during subsequent treatment. The presence of two different treatment strategies (TT vs biological therapy) gave an opportunity to study the MBDA score as a predictor of patients at high versus low risk of RRP for each therapy group, separately. As the data from figure 4 suggest, patients with a high MBDA score would benefit more from anti-TNF therapy than from TT, decreasing their risk of RRP by year 2. Thus, while MBDA testing is more expensive than using conventional biomarkers (ie, ESR and CRP), targeting (biological) therapies to the patients with the greatest potential benefit may generate considerable savings.

In conclusion, a low MBDA score at BL, month 3 and year 1, was predictive for low risk of RRP over 2 years of follow-up in patients with eRA, and this association was stronger (non-significantly) than associations with low DAS28, CRP or ESR. The MBDA score may thereby become a useful tool for guiding treatment choices in individual patients.

Author affiliations

¹Unit of Clinical Therapy Research, Inflammatory Diseases (ClinTRID), Department of Medicine, Karolinska Institutet, Karolinska University Hospital, Stockholm, Sweden

²Crescendo Bioscience Inc, South San Francisco, California, USA

³Rheumatology Unit, Department of Medicine, Karolinska University Hospital and Karolinska Institutet, Stockholm, Sweden

⁴Section of Rheumatology, Department of Clinical Sciences, Lund University, Helsingborg, Sweden

⁵Section of Rheumatology, Department of Medicine, Helsingborg's Lasarett, Helsingborg, Sweden

⁶Section of Rheumatology, Department of Clinical Sciences, Lund University, Lund, Sweden

⁷Scott Cruickshank and Associates Inc, Santa Barbara, California, USA

Acknowledgements The SWEFOT trial investigating groups, besides the authors: Johan Bratt, Stockholm; Ingemar Petersson, Lund; Pierre Geborek, Lund; Sofia Ernestam, Stockholm; Kristina Albertsson, Stockholm; Lars Cöster, Linköping; Eva Waltbrand, Borås; Agneta Zickert, Stockholm; Jan Theander, Kristianstad; Åke Thörner, Eskilstuna; Helena Hellström, Falun; Annika Telemann, Halmstad; Christina Dackhammar, Mölndal; Finn Akre, Örebro; Lotta Ljung, Umeå; Rolf Oding, Västerås; Katerina Chatzidionysiou, Stockholm; Margareta Wörnert, Stockholm. The authors would like to thank all participating patients and the study nurses, co-investigators and colleagues who made this trial possible.

Contributors KH had the lead role in management of the merged clinical and serological data sets, and analyses thereof, discussions with collaborators, drafting of the manuscript and its final approval for submission. SS contributed to the management of the merged clinical and serological data sets, and had a lead role in the statistical analyses thereof, participated in discussions with collaborators, critically reviewed the manuscript and approved the final version for submission. RJB, SEC, EHS and DC were

responsible for the serum analyses and MBDA score generation, and quality control of these data, and contributed to analysis and interpretations of these data; they all reviewed the manuscript critically and approved the final version for submission. KF was mainly responsible for radiological scoring in the SWEFOT trial, and supported the statistical analyses and interpretations thereof, participated in discussions with collaborators, critically reviewed the manuscript and approved the final version for submission. JKW was a key investigator and steering committee member in the SWEFOT trial. He supported the statistical analyses and interpretations of the data in the current study, participated in discussions with collaborators, critically reviewed the manuscript and approved the final version for submission. RFV was the investigator in the SWEFOT trial as well as being the investigator responsible for the study reported here. He designed the study and organised the collaboration with Crescendo Biosciences Inc, for the patients' serum analyses and the MBDA score generation. He also discussed and reviewed the manuscript critically and gave his final approval for submission of the manuscript.

Funding The work was supported in part by a grant from the Swedish Rheumatism Association. Some of the authors were supported by clinical research funds from Stockholm County (ALF funds). An annual unrestricted grant was provided by Schering-Plough Sweden, which was used to support a study coordinator and a medical monitor for the original clinical trial. The analyses of the MBDA score were performed by Crescendo Bioscience Inc (South San Francisco, California, USA), at no cost to the investigators.

Competing interests RFV received a grant/research support from: AbbVie, BMS, GSK, Pfizer, Roche, UCB; was a consultant for: AbbVie, Biotech, BMS, Crescendo Bioscience, GSK, Janssen, Lilly, Merck, Pfizer, Roche, UCB, Vertex. JKW reported participating in an advisory board for Novartis, unrelated to the present work. RJB is a shareholder of: Myriad Genetics Inc, and an employee of: Crescendo Bioscience, a wholly owned subsidiary of Myriad Genetics, Inc. EHS is a shareholder of: Myriad Genetics Inc, and an employee of: Crescendo Bioscience, a wholly owned subsidiary of Myriad Genetics, Inc. DC is a consultant for: Crescendo Bioscience, a wholly owned subsidiary of Myriad Genetics, Inc. SEC is an independent contractor to Crescendo Bioscience Inc, and is paid on an hourly basis. KH, SS and KF: None declared.

Ethics approval The study was approved by the regional ethics committees of all participating units.

Provenance and peer review Not commissioned; externally peer reviewed.

Data sharing statement No additional data are available.

Open Access This is an Open Access article distributed in accordance with the Creative Commons Attribution Non Commercial (CC BY-NC 4.0) license, which permits others to distribute, remix, adapt, build upon this work non-commercially, and license their derivative works on different terms, provided the original work is properly cited and the use is non-commercial. See: <http://creativecommons.org/licenses/by-nc/4.0/>

REFERENCES

- van Nies JAB, Krabben A, Schoones JW, *et al*. What is the evidence for the presence of a therapeutic window of opportunity in rheumatoid arthritis? A systematic literature review. *Ann Rheum Dis* 2014;73:861–70.
- Escudero-Vilaplana V, Ramirez-Herraz E, Trovato-Lopez N, *et al*. Influence on effectiveness of early treatment with anti-TNF therapy in rheumatoid arthritis. *J Pharm Pharm Sci* 2012;15:355–60.
- Molenaar ET, Voskuyl AE, Dinant HJ, *et al*. Progression of radiologic damage in patients with rheumatoid arthritis in clinical remission. *Arthritis Rheum* 2004;50:36–42.
- Klarenbeek NB, Koevoets R, van der Heijde DM, *et al*. Association with joint damage and physical functioning of nine composite indices and the 2011 ACR/EULAR remission criteria in rheumatoid arthritis. *Ann Rheum Dis* 2011;70:1815–21.
- Landewé R, Geusens P, Boers M, *et al*. Markers for type II collagen breakdown predict the effect of disease-modifying treatment on long-term radiographic progression in patients with rheumatoid arthritis. *Arthritis Rheum* 2004;50:1390–9.
- Lillegraven S, Prince FH, Shadick NA, *et al*. Remission and radiographic outcome in rheumatoid arthritis: application of the 2011 ACR/EULAR remission criteria in an observational cohort. *Ann Rheum Dis* 2012;71:681–6.
- Rezaei H, Saevardottir S, Forslind K, *et al*. In early rheumatoid arthritis, patients with a good initial response to methotrexate have excellent 2-year clinical outcomes, but radiological progression is not fully prevented: data from the methotrexate responders population in the SWEFOT trial. *Ann Rheum Dis* 2012;71:186–91.
- Avouac J, Gossec L, Dougados M. Diagnostic and predictive value of anti-cyclic citrullinated protein antibodies in rheumatoid arthritis: a systematic literature review. *Ann Rheum Dis* 2006;65:845–51.
- Forslind K, Ahlmén M, Eberhardt K, *et al*. Prediction of radiological outcome in early rheumatoid arthritis in clinical practice: role of antibodies to citrullinated peptides (anti-CCP). *Ann Rheum Dis* 2004;63:1090–5.
- Garnero P, Landewé R, Boers M, *et al*. Association of baseline levels of markers of bone and cartilage degradation with long-term progression of joint damage in patients with early rheumatoid arthritis—the COBRA Study. *Arthritis Rheum* 2002;46:2847–56.
- Goronzy JJ, Matteson EL, Fulbright JW, *et al*. Prognostic markers of radiographic progression in early rheumatoid arthritis. *Arthritis Rheum* 2004;50:43–54.
- Liao KP, Weinblatt ME, Cui J, *et al*. Clinical predictors of erosion-free status in rheumatoid arthritis: a prospective cohort study. *Rheumatology (Oxford)* 2011;50:1473–9.
- Masdotir B, Jónsson T, Manfredsdottir V, *et al*. Smoking, rheumatoid factor isotypes and severity of rheumatoid arthritis. *Rheumatology (Oxford)* 2000;39:1202–5.
- Meyer O, Nicaise-Roland P, Santos MD, *et al*. Serial determination of cyclic citrullinated peptide autoantibodies predicted five-year radiological outcomes in a prospective cohort of patients with early rheumatoid arthritis. *Arthritis Res Ther* 2006;8:R40.
- Nell VPK, Machold KP, Stamm TA, *et al*. Autoantibody profiling as early diagnostic and prognostic tool for rheumatoid arthritis. *Ann Rheum Dis* 2005;64:1731–6.
- Quinn MA, Gough AKS, Green MJ, *et al*. Anti-CCP antibodies measured at disease onset help identify seronegative rheumatoid arthritis and predict radiological and functional outcome. *Rheumatology (Oxford)* 2006;45:478–80.
- Saag KG, Cerhan JR, Kolluri S, *et al*. Cigarette smoking and rheumatoid arthritis severity. *Ann Rheum Dis* 1997;56:463–9.
- Smolen JS, Van Der Heijde DM, St Clair EW, *et al*. Predictors of joint damage in patients with early rheumatoid arthritis treated with high-dose methotrexate with or without concomitant infliximab: results from the ASPIRE trial. *Arthritis Rheum* 2006;54:702–10.
- Saevardottir S, Rezaei H, Geborek P, *et al*. Current smoking status is a strong predictor of radiographic progression in early rheumatoid arthritis: results from the SWEFOT trial. *Ann Rheum Dis* 2015;74:1509–14.
- Centola M, Cavet G, Shen Y, *et al*. Development of a multi-biomarker disease activity test for rheumatoid arthritis. *PLoS ONE* 2013;8:e60635.
- Curtis JR, van der Helm-van Mil AH, Knevel R, *et al*. Validation of a novel multi-biomarker test to assess rheumatoid arthritis disease activity. *Arthritis Care Res (Hoboken)* 2012;64:1794–803.
- van der Helm-van Mil AH, Knevel R, Cavet G, *et al*. An evaluation of molecular and clinical remission in rheumatoid arthritis by assessing radiographic progression. *Rheumatology (Oxford)* 2013;52:839–46.
- van Vollenhoven RF, Ernestam S, Geborek P, *et al*. Addition of infliximab compared with addition of sulfasalazine and hydroxychloroquine to methotrexate in patients with early rheumatoid arthritis (SWEFOT trial): 1-year results of a randomised trial. *Lancet* 2009;374:459–66.
- van Vollenhoven RF, Geborek P, Forslind K, *et al*. Conventional combination treatment versus biological treatment in methotrexate-refractory early rheumatoid arthritis: 2 year follow-up of the randomised, non-blinded, parallel-group SWEFOT trial. *Lancet* 2012;379:1712–20.
- Hambardzumyan K, Bolce R, Saevardottir S, *et al*. Pretreatment multi-biomarker disease activity score and radiographic progression in early RA: results from the SWEFOT trial. *Ann Rheum Dis* 2015;74:1102–9.
- van Gestel AM, Prevoo ML, van 't Hof MA, *et al*. Development and validation of the European League Against Rheumatism response criteria for rheumatoid arthritis. Comparison with the preliminary American College of Rheumatology and the World Health Organization/International League Against Rheumatism Criteria. *Arthritis Rheum* 1996;39:34–40.
- Takahashi N, Kojima T, Kaneko A, *et al*. Clinical efficacy of abatacept compared to adalimumab and tocilizumab in rheumatoid

- arthritis patients with high disease activity. *Clin Rheumatol* 2014;33:39–47.
28. van der Heijde D. How to read radiographs according to the Sharp/van der Heijde method. *J Rheumatol* 2000;27:261–3.
29. Bruynesteyn K, van der Heijde D, Boers M, *et al.* Determination of the minimal clinically important difference in rheumatoid arthritis joint damage of the Sharp/van der Heijde and Larsen/Scott scoring methods by clinical experts and comparison with the smallest detectable difference. *Arthritis Rheum* 2002;46:913–20.
30. Vastesaeger N, Xu S, Aletaha D, *et al.* A pilot risk model for the prediction of rapid radiographic progression in rheumatoid arthritis. *Rheumatology (Oxford)* 2009;48:1114–21.
31. Bruynesteyn K, Van Der Heijde D, Boers M, *et al.* Detecting radiological changes in rheumatoid arthritis that are considered important by clinical experts: influence of reading with or without known sequence. *J Rheumatol* 2002;29:2306–12.
32. Eastman PS, Manning WC, Qureshi F, *et al.* Characterization of a multiplex, 12-biomarker test for rheumatoid arthritis. *J Pharm Biomed Anal* 2012;70:415–24.
33. Bakker MF, Cavet G, Jacobs JW, *et al.* Performance of a multi-biomarker score measuring rheumatoid arthritis disease activity in the CAMERA tight control study. *Ann Rheum Dis* 2012;71:1692–7.