

## EXTENDED REPORT

## Association between diabetes mellitus and osteoarthritis: systematic literature review and meta-analysis

Karine Louati,<sup>1,2,3</sup> Céline Vidal,<sup>1,2</sup> Francis Berenbaum,<sup>1,2,3,4</sup> Jérémie Sellam<sup>1,2,3,4</sup>

**To cite:** Louati K, Vidal C, Berenbaum F, *et al.* Association between diabetes mellitus and osteoarthritis: systematic literature review and meta-analysis. *RMD Open* 2015;1:e000077. doi:10.1136/rmdopen-2015-000077

► Prepublication history and additional material is available. To view please visit the journal (<http://dx.doi.org/10.1136/rmdopen-2015-000077>).

Received 26 January 2015  
Revised 16 March 2015  
Accepted 17 March 2015



CrossMark

<sup>1</sup>Department of Rheumatology, Assistance Publique-Hôpitaux de Paris (AP-HP), Saint-Antoine Hospital, Paris, France

<sup>2</sup>Inflammation-Immunopathology-Biotherapy Department (DHU i2B), Paris, France

<sup>3</sup>Sorbonne Universités, UPMC Univ Paris 06, Paris, France

<sup>4</sup>Faculté de Médecine Saint Antoine, INSERM UMR\_S 938, Paris, France

**Correspondence to**

Professor Francis Berenbaum;  
francis.berenbaum@sat.aphp.fr

**ABSTRACT**

**Objectives:** To investigate the prevalence of osteoarthritis (OA) in patients with diabetes mellitus (DM) and prevalence of DM in patients with OA and whether OA and DM are associated.

**Design:** A systematic literature review and meta-analysis. We included cohort, case-control and cross-sectional studies assessing the number of patients with DM and/or OA. The mean prevalence of OA among patients with DM and DM among patients with OA was calculated. Data from trials assessing an association of diabetes and OA were pooled and results are presented as unadjusted OR and 95% CI.

**Results:** From the 299 publications, we included 49 studies in the analysis, including 28 cross-sectional studies, 11 cohort studies and 10 case-control studies. In all, 21, 5 and 23 articles involved patients with OA exclusively, patients with DM and the general population, respectively. For 5788 patients with DM, the mean OA prevalence was 29.5±1.2%. For 645 089 patients with OA, the prevalence of DM was 14.4±0.1%. The risk of OA was greater in the DM than non-DM population (OR=1.46 (1.08 to 1.96), p=0.01), as was DM in the OA than non-OA population (OR=1.41 (1.21 to 1.65), p<0.00 001). Among the 12 studies reporting an OR adjusted on at least the body mass index, 5 showed no association of DM and OA and 7 identified DM as an independent risk factor.

**Conclusions:** This meta-analysis highlights a high frequency of OA in patients with DM and an association between both diseases, representing a further step towards the individualisation of DM-related OA within a metabolic OA phenotype.

**INTRODUCTION**

Osteoarthritis (OA) is the most frequent and disabling joint disease in adults. Besides its several localisations, a recent hypothesis has suggested a new classification for phenotyping OA that includes ageing, metabolic syndrome (MetS) and post-traumatic events and genetic-related OA.<sup>1 2</sup> Despite some shared pathophysiological mechanisms among these phenotypes, each may display specific pathways.

**Key messages****What is already known on this subject?**

► Metabolic syndrome and osteoarthritis have been found to be associated in some studies, delineating the metabolic osteoarthritis phenotype. Association between diabetes mellitus and osteoarthritis in epidemiological studies have given conflicting results.

**What does this study add?**

► This is the first meta-analysis showing an association between osteoarthritis and diabetes mellitus.

**How might this impact on clinical practice?**

► Treating diabetes mellitus may be effective in patients with osteoarthritis.  
► Prevention initiatives of osteoarthritis may be specifically proposed to patients with diabetes mellitus.

In MetS-associated OA, the mechanical impact of overweight or obesity on joints may easily explain knee OA. However, within this phenotype, considering the epidemiological association of overweight or obesity and hand OA, some systemic factors may participate in the pathogenic process; for example, adipose tissue products, or 'adipokines', may have a systemic impact at a distance on joints.<sup>3-5</sup> Beyond obesity-related OA, MetS and OA have been found to be associated in some epidemiological studies, which suggests that the other components of MetS, such as diabetes mellitus (DM), high blood pressure or dyslipidaemia may together or independently participate in the OA pathophysiology.<sup>6 7</sup> Along this line, DM and hyperglycaemia seemed to be associated with OA in some epidemiological studies.<sup>8-11</sup> Moreover, the link between the two diseases may be supported by the deleterious role of glucose excess through the accumulation of advanced glycation end products (AGEs), oxidative stress and promotion of systemic inflammation.<sup>12-15</sup> This situation

is well illustrated by spontaneous cartilage disruption in the rat model of streptozotocin-induced diabetes.<sup>12–15</sup> However, other publications have questioned the link between DM and OA.<sup>16 17</sup>

To further address the association of OA and DM, we performed a systematic review of the literature and a meta-analysis to investigate the prevalence of OA among patients with DM and that of DM among patients with OA and to determine whether DM and OA are associated.

## METHODS

### Systematic literature search and selection of relevant studies

We performed a systematic review of the literature according to the Cochrane guidelines (<http://handbook.cochrane.org/>, 24 February 2014, date last accessed). Relevant publications were selected from three databases (PubMed, EMBASE and the Cochrane Library) without any limitation on time (up to June 2013 and updated in January 2015). We also searched for articles in the references of selected publications and the main congresses of rheumatology for OA (American College of Rheumatology (ACR), European League Against Rheumatism (EULAR) and Osteoarthritis Research Society International (OARSI)) and congresses of endocrinology (Endocrine society's annual meeting, European Congress of Endocrinology, American Diabetes Association and European Association for the Study of Diabetes) from 2012 to 2014. We used the following key words for the PubMed search: (“diabetes mellitus, type 2”[MeSH] OR “diabetes mellitus, type 1”[MeSH] OR “diabetes complications”[MeSH] OR “metabolic syndrome X”[MeSH] OR (“blood glucose”[MeSH] OR “blood glucose”[All Fields])) AND “osteoarthritis”[MeSH] AND (“humans”[MeSH] AND (English[lang] OR French[lang])).

We included observational studies (ie, cohort, case-control and cross-sectional studies) assessing the number of patients with OA and/or DM, or the incidence or prevalence of OA in patients with DM or DM in patients with OA, or an association between OA and DM. We excluded articles of therapeutic studies, reviews and case reports as well as letters; studies in which all patients had OA and DM or in which the link between OA and DM was not reported; and studies without an available number of patients with each disease. Selection of articles was based on titles and abstracts than on the full text. One author (KL) has managed this selection.

### Data extraction

Two authors (KL and CV) extracted the following data: study design and population (observational study, quality score, definition of DM and OA and localisation of OA); exposure glycaemia (fasting blood glucose (FBG) level, mmol/L) or glycosylated haemoglobin (HbA1c; %) or number of patients with DM; outcome (number of

patients with OA); body mass index (BMI, kg/m<sup>2</sup>) or number of patients with obesity as potential confounders; association measure (relative risk or OR or only conclusion on an association). Then we conversely considered OA as an exposure factor and DM as an outcome. The study quality was assessed by the Strengthening the Reporting of Observational Studies in Epidemiology (STROBE) scale and results are reported as a percentage of 19 pertinent items of the 22 total items.<sup>18</sup>

### Statistical analysis

We performed two analyses with available results from trials. First, we performed a descriptive analysis: for cross-sectional, case-control or cohort studies, we used the number of patients with OA or DM and total number in each population to calculate the prevalence of OA among patients with DM and that of DM among patients with OA. To estimate this prevalence from cohort longitudinal prospective studies, we used baseline data. Prevalence is expressed as mean±SD. Second, we performed a comparative analysis using studies assessing an association between diagnosis of DM and OA in cross-sectional studies and cohort studies of the general population and case-control studies of OA or DM populations. We calculated the odds of having OA among patients with DM and of DM among patients with OA with ORs and 95% CIs. Then we used Revman V.5.2 to perform a meta-analysis with a fixed-effects model. A random-effects model was used with high heterogeneity among studies (>50%), evaluated by I<sup>2</sup>, and a sensitivity analysis was performed by removing studies with aberrant results and combining studies with the same characteristics. OR>1 and p≤0.05 was considered an increased risk of OA among patients with DM and/or DM among patients with OA.

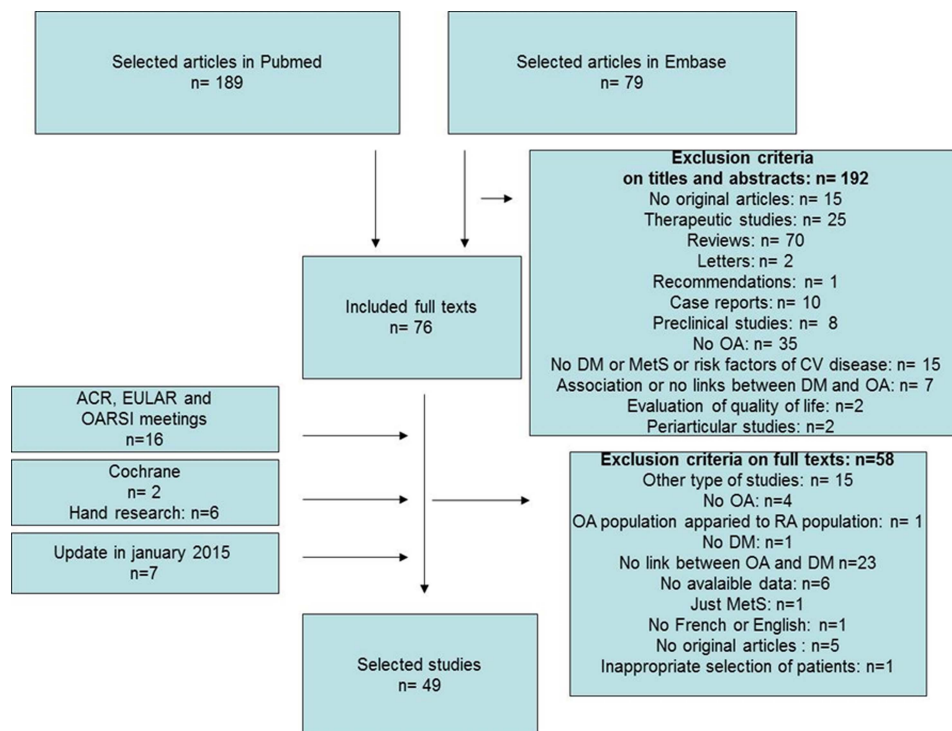
## RESULTS

### Literature search and characteristics of included trials

The selection of articles is in [figure 1](#): from 299 publications, we included 49 in the analysis. We found no publication bias (see online supplementary figure S1). The articles represented 28 cross-sectional, 11 cohort and 10 case-control studies. In total, 21, 5 and 23 involved exclusively patients with OA, exclusively patients with DM and the general population, respectively ([table 1](#)).

The criteria of inclusion for the general population were variable for age: from 20 to 86 years for the Iwaki Health Promotion Project,<sup>20</sup> and from 65 to 84 years for the ILSA study;<sup>46</sup> the patients had radiographs of hips for the study of Typpo,<sup>31</sup> or data were extracted from public service data for the study of Navarro *et al.*<sup>34</sup> In most cases, OA was defined by radiological and clinical criteria, usually based on the ACR criteria. DM was defined by elevated glycaemia, HbA1c proportion or prescription of DM treatment ([table 2](#)).

**Figure 1** Flow chart of selection of articles. OA, osteoarthritis; DM, diabetes mellitus; RA, rheumatoid arthritis; MetS, metabolic syndrome; CV, cardiovascular; ACR, American College of Rheumatology; EULAR, The European League Against Rheumatism; OARSI, Osteoarthritis Research Society International.



Only two studies specified the number of patients with type 1 and type 2 DM:<sup>19 57</sup> in the study of Nieves-Plaza *et al.*,<sup>57</sup> there were only 14 patients with type 1 DM with a similar repartition in the OA and non-OA groups, and in the study of Ray *et al.*<sup>19</sup> there were 11% patients with type 1 DM with a similar repartition in the OA and non-OA groups. The median STROBE quality score was 69% (range 33–91%; table 2). For 6 studies (4 case-control and 2 cross-sectional studies), the score was <50%, and for 30 studies it was >60%. The country of origin of the studies was diverse (22 studies with patients from Europe and 16 studies with patients from North America). For four studies, OA was severe because the outcome was arthroplasty. Among the 49 studies, 34 assessed the association between OA and DM, 28 the frequency of DM among patients with OA and 24 the frequency of OA among patients with DM.

### Characteristics of patients

A total of 1 192 518 patients were included in the analyses. The mean age ranged from 43.8±43.9 to 76.9±5.4 years.<sup>7 46</sup> The mean proportion of females was 78.92% (from 9.3% to 100%).<sup>29 35 63</sup> The localisation was the knee for 31 studies (knee only for 13 studies), the hip for 15 studies (hip only for 3 studies), hands for 12 studies (hands only for 4 studies) and the spine for 5 studies (see online supplementary table S1). The mean FBG level ranged from 3.95 (no SD available) to 12.17 ±6.49 mmol/L and HbA1c from 5.1±0.1% to 7.2% (no SD available).<sup>19 20 63 64</sup> The prevalence of obesity varied greatly from 9.1% to 73.2%, and BMI ranged from 22.3 ±2.7 to 33.8±5.8 g/cm<sup>2</sup>.<sup>2 7 20 34 35 36</sup> MetS was reported in five studies using different definitions in which

hyperglycaemia was one of the items and involved 5.1–58.6% of patients.<sup>7 20 34 36 42 48</sup>

### Prevalence of OA among patients with DM and DM among patients with OA

For 5788 patients with DM, the mean OA prevalence was 29.5±1.2% (mean age=61.01 years). This prevalence was calculated by using the 5 and 12 studies of patients with DM and the general population, respectively, with available data on the number of patients with OA in the DM population (see online supplementary table S2). In this population, the prevalence of OA calculated with available data for each localisation was 17.2±2.0% for the knee,<sup>10 19 20 34 42 48</sup> 12.3±1.3% for the hip<sup>31 48</sup> and 38.4 ±6.8% for the hand.<sup>36 50</sup>

For 645 089 patients with OA, the DM prevalence was 14.4±0.1%. It was calculated by using the 19 and 12 studies of patients with OA and the general population, respectively, with available data on the number of patients with DM in the OA population (see online supplementary table S2). Three studies involving patients with OA were not included because they assessed semiquantitative or continuous variables, the Kellgren-Lawrence (KL) score and glycaemia but not OA or DM diagnosis.<sup>56 60 63</sup>

### Associations between OA and DM

In total, 34 studies assessed the association of OA and DM and/or glycaemia or HbA1c proportion; 21 showed a significant association in their conclusions or at least reported OR>1 in the text,<sup>7 8 10 20 25 28 29 39 41 44 46 50–52 54 55 57 58 60 61 63</sup> whereas 12 studies displayed no association.<sup>16 17 27 31 34 38 42 48 49</sup>

**Table 1** Description of the 49 studies selected for analysis

Type of study/ population	OA			Diabetes mellitus			General population		
	Author	Year	Sample size	Author	Year	Sample size	Author	Year	Sample size
Cross-sectional	Stürmer <i>et al</i> <sup>16</sup>	2001	809	Ray <i>et al</i> <sup>19</sup>	2011	100	Inoue <i>et al</i> <sup>20</sup>	2011	795
	Lanas <i>et al</i> <sup>21</sup>	2010	3293	Sarkar <i>et al</i> <sup>22</sup>	2008	80	Puenpatom and Victor <sup>7</sup>	2009	7714
	Reeuwijk <i>et al</i> <sup>23</sup>	2010	288	Miksch <i>et al</i> <sup>24</sup>	2009	1399	Dahaghin <i>et al</i> <sup>25</sup>	2007	3585
	Adams <i>et al</i> <sup>26</sup>	2013	39 031				Martin <i>et al</i> <sup>27</sup>	1997	739
	Shirinsky and Shirinsky <sup>*28</sup>	2013	5674				Hart <i>et al</i> <sup>29</sup>	1995	979
	Cimmino <i>et al</i> <sup>30</sup>	2005	2393				Typpo <sup>31</sup>	1985	518
	Magnusson <i>et al</i> <sup>32</sup>	2014	530				Schett <i>et al</i> <sup>†10</sup>	2009	927
	Conaghan <i>et al</i> <sup>33</sup>	2014	1187				Navarro <i>et al</i> <sup>*34</sup>	2012	438
	Zullig <i>et al</i> <sup>35</sup>	2014	300				Orellana <i>et al</i> <sup>*36</sup>	2012	324
	Bija <i>et al</i> <sup>37</sup>	2014	148				Anderson and Felson <sup>38</sup>	1988	5193
Cohort	Jansen <i>et al</i> <sup>43</sup>	2012	96 754				Silveri <i>et al</i> <sup>39</sup>	1994	48
	Baker <i>et al</i> <sup>45</sup>	2013	62				Perruccio <i>et al</i> <sup>*40</sup>	2013	983
	Peniston <i>et al</i> <sup>47</sup>	2012	947				Yoshimura <i>et al</i> <sup>8</sup>	2011	1690
							Wang <i>et al</i> <sup>41</sup>	2013	1877
							Shin <sup>42</sup>	2014	2363
							Davies-Tuck <i>et al</i> <sup>44</sup>	2012	179
							Siviero <i>et al</i> <sup>46</sup>	2009	1867
							Engstrom <i>et al</i> <sup>48</sup>	2009	5194
							Frey <i>et al</i> <sup>17</sup>	1996	1514
							Bagge <i>et al</i> <sup>49</sup>	1991	340
Case-control§	Philbin <i>et al</i> <sup>54</sup>	1996	69	Ladjimi <i>et al</i> <sup>55</sup>	1985	68	(Schett <sup>†10</sup> )	2012	–
	Denko <i>et al</i> <sup>56</sup>	1994	135	Nieves-Plaza <i>et al</i> <sup>57</sup>	2013	226	Haugen <i>et al</i> <sup>‡</sup>	2013	1348
	Cimmino <i>et al</i> <sup>58</sup>	1990	1226				Sowers <i>et al</i> <sup>51</sup>	2009	664
	Lindberg and Nilsson <sup>59</sup>	1985	558				Visser <i>et al</i> <sup>52 53</sup>	2013	4980
	Dequeker <i>et al</i> <sup>60</sup>	1982	53						
	Rahman <i>et al</i> <sup>61</sup>	2013	150 267						
	Wang <i>et al</i> <sup>62*</sup>	2013	856 168						
	Horn <i>et al</i> <sup>63</sup>	1992	76						

\*Data from congress.

†One analysis with a cohort study (not analysed), one analysis with a cross-sectional study, with the same population (included in analysis).

‡One analysis with radiographic OA, one analysis with symptomatic OA.

§Size for total number of patients (cases+controls).

EULAR, The European League Against Rheumatism; OA, osteoarthritis.

**Table 2** Characteristics of the 49 included studies

Author	Name of study	Diabetes definition	OA definition	STROBE study quality (%)	Outcome
Stürmer <i>et al</i> <sup>16</sup>	Ulm OA	–	Arthroplasty or KL $\geq 2$	57	NP DM/OA
Lanas <i>et al</i> <sup>21</sup>	LOGICA	–	–	63	NP DM/OA
Reeuwijk <i>et al</i> <sup>23</sup>	–	–	ACR	77	NP DM/OA
Adams <i>et al</i> <sup>26</sup>	–	HbA1c $\geq 6.5\%$ or codes	–	88	NP DM/OA
Shirinsky and Shirinsky <sup>28*</sup>	OAI	Codes	–	NA	NP DM/OA
Jansen <i>et al</i> <sup>43</sup>	PERFECT	Codes or drugs prescription register	Codes	67	NP DM/OA
Baker <i>et al</i> <sup>45*</sup>	–	–	–	NA	NP DM/OA
Peniston <i>et al</i> <sup>47</sup>	–	–	KL $\geq 3$ , ACR	58	NP DM/OA
Philbin <sup>54</sup>	–	FBG $>110$ mg/dL on 2 samples taken at least 24 h apart	Questionnaire, radiological Danielson scale	73	NP2
Denko <i>et al</i> <sup>66</sup>	–	–	Pain and rx	42	Glyc in the OA population
Cimmino <i>et al</i> <sup>68</sup>	–	FBG $\geq 140$ mg/dL (National Diabetes data group of the US National Institutes of Health (USA)+ WHO)	KL $\geq 2$ and pain	52	NP2 and glyc in the OA and control populations
Lindberg and Nilsson <sup>59</sup>	–	–	Rx before arthroplasty	36	NP2
Dequeker <i>et al</i> <sup>60</sup>	–	–	–	33	Glyc in the OA and control populations
Rahman <i>et al</i> <sup>61</sup>	CCHS	Questionnaire	Questionnaire	73	NP2
Wang <i>et al</i> <sup>62*</sup>	–	–	Reported	NA	NP2
Horn <i>et al</i> <sup>63</sup>	–	–	KL	55	KL in the DM and non-DM, OA populations (semiquantitative scale)
Ray <i>et al</i> <sup>19</sup>	–	WHO criteria: FBG $>7$ mmol/L or 2 h PPFG glucose $>11.1$ mmol/L after oral glucose test or diabetes symptoms and FPG $>11.1$ mmol/L	Clinical, Rx, ACR	50	NP OA/DM
Sarkar <i>et al</i> <sup>22</sup>	–	FBG, PPBG and HbA1c	Clinical and Rx	45	NP OA/DM
Miksch <i>et al</i> <sup>24</sup>	ELSID	Questionnaire	Questionnaire	75	NP OA/DM
Ladjimi <i>et al</i> <sup>65</sup>	–	Glyc and HbA1c	Clinical and Rx	45	NP2
Nieves-Plaza <i>et al</i> <sup>67</sup>	–	National Diabetes Data Group Classification: symptoms+FBG $>200$ mg/dL or FBG $>126$ mg/dL or 2 h PPBG $>200$ mg/dL after an oral glucose test	ACR	82	NP2
Inoue <i>et al</i> <sup>20</sup>	Iwaki Health Promotion Project	HbA1c $>5.8\%$	KL $\geq 2$	69	NP2 and HbA1c in the OA and non-OA populations
Puenpatom and Victor <sup>7</sup>	NHANES III	FBG $\geq 110$ mg/dL, codes, history of diabetes or drugs for diabetes	Codes, Rx or history of OA by physician	69	NP2
Dahaghin <i>et al</i> <sup>25</sup>	Rotterdam	FBG or PPBG $\geq 11.0$ mmol/L or drugs for diabetes	KL $\geq 2$ (hand Rx) and clinical (ACR)	78	NP2
Martin <i>et al</i> <sup>27</sup>	BLSA	FBG $\geq 140$ mg/dL or 2 h PPBG $\geq 200$ mg/dL or drugs for diabetes	KL $\geq 2$	66	FBG and PPBG in the OA and non-OA populations
Hart <i>et al</i> <sup>29</sup>	–	History of diabetes or FBG $\geq 12.8$ mmol/L	KL $\geq 2$ (knee Rx)	78	Glyc in the OA and/or DM population (semiquantitative scale)
Typpo <sup>31</sup>	–	Reported	Rx	44	NP2
Schett <i>et al</i> <sup>10†</sup>	Bruneck study	FBG $\geq 7$ mmol/L or 126 mg/dL, or drugs for diabetes or HbA1c $\geq 6.5\%$ or PPBG $\geq 11.1$ mmol/L or 200 mg/dL	Arthroplasty for hip or knee OA	81	NP2 and Glyc in the OA and non-OA populations

Continued

Table 2 Continued

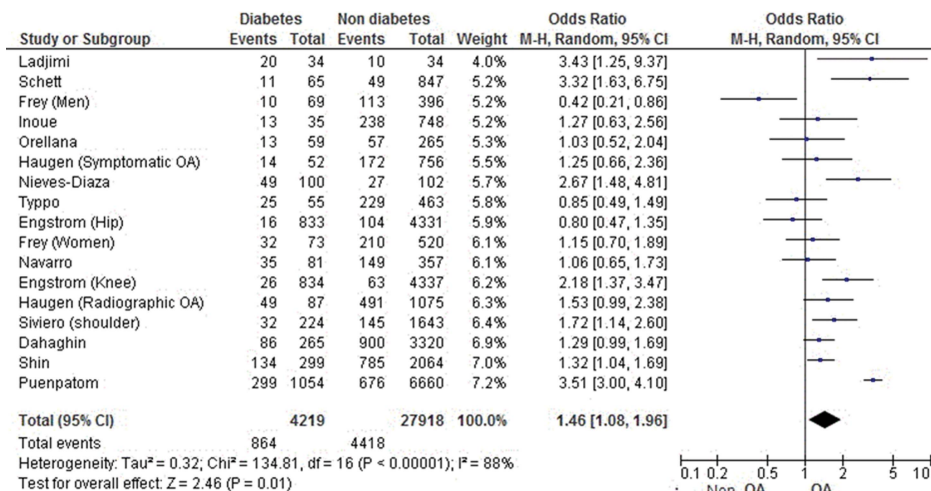
Author	Name of study	Diabetes definition	OA definition	STROBE study quality (%)	Outcome
Navarro <i>et al</i> <sup>34*</sup>	–	Database of public health service	–	NA	NP2
Orellana <i>et al</i> <sup>36*</sup>	–	Database of public health service	–	NA	NP2
Anderson and Felson <sup>38</sup>	HANES I	History of diabetes	KL $\geq 2$ (knee Rx) and pain $\geq 1$ month	81	OR of OA in the DM population
Silveri <i>et al</i> <sup>39</sup>	–	FBG	Clinical and Rx	56	NP2
Perruccio <i>et al</i> <sup>40*</sup>	–	Reported	–	NA	NP DM/OA
Yoshimura <i>et al</i> <sup>†</sup>	ROAD	HbA1c $\geq 5.5\%$ or drugs for diabetes	KL $\geq 2$ (knee Rx)	91	HbA1c in the OA and non-OA populations
Davies-Tuck <i>et al</i> <sup>44</sup>	MCCS	FBG $\geq 7$ mmol/L or reported (exclusion)	ACR	73	Glyc, cartilage volume and bone marrow lesions
Siviero <i>et al</i> <sup>46</sup>	ILSA	FBG $\geq 140$ mg/dL or drugs for diabetes	History and clinical	55	NP2
Engstrom <i>et al</i> <sup>48</sup>	MDC	FBG $\geq 5.6$ mmol/L	Codes: arthroplasty for hip or knee OA	79	NP2 (data for knee and data for hip)
Frey <i>et al</i> <sup>17</sup>	Rancho Bernardo Cohort	FBG $\geq 140$ mmol/L twofold or PPBG $\geq 200$ mg/dL after an oral glucose test	Clinical (nurse examination) or history of OA	70	NP2 (data for men and data for women)
Bagge <i>et al</i> <sup>49</sup>	–	FBG $\geq 8.3$ mmol/L or drugs for diabetes	KL $\geq 2$ (knee and hand)	67	NP OA/DM (but NP DM at baseline and NP OA at end point)
Haugen <i>et al</i> <sup>50</sup>	Framingham	FBG $\geq 126$ mg/dL or PPBG $\geq 200$ mg/dL	Clinical and Rx (KL $\geq 2$ )	84	NP2 (data for radiological OA and symptomatic OA, exclusive groups)
Sowers <i>et al</i> <sup>51</sup>	MBHMS	History of diabetes or drugs for diabetes or FBG $>126$ mg/dL	KL $\geq 2$ (knee Rx)	70	Glyc for the OA and non-OA population
Visser <i>et al</i> <sup>52 53*</sup>	NEO	FBG $\geq 5.6$ mmol/L or drugs for diabetes	ACR	84	OR of Glyc and HbA1c in the OA population
Wang <i>et al</i> <sup>41</sup>	Inner Mongolia OA Study	Questionnaire	Clinical and Rx (KL $\geq 2$ )	69	Number of patients with OA in the general population but no data on the number of patients with diabetes
Shin <sup>42</sup>	KNHANES V-1	FBG $\geq 100$ mg/dL or drugs for diabetes	Rx (KL $\geq 2$ )	74	NP2
Cimmino <i>et al</i> <sup>60</sup>	AMICA	Questionnaire	ACR	53	NP DM/OA
Magnusson <i>et al</i> <sup>32</sup>	MUST	Questionnaire	ACR and hand Rx ( $\geq 1$ joint with KL $\geq 2$ )	74	NP DM/OA
Conaghan <i>et al</i> <sup>33</sup>	SORT	Questionnaire	Clinical	72	NP DM/OA
Zullig <i>et al</i> <sup>35</sup>	Patient and provider interventions for managing OA in primary care	Reported	ACR or Rx	66	NP DM/OA
Bija <i>et al</i> <sup>37</sup>	–	Reported	ACR or Rx with KL but no cut-off (including KL=1)	72	NP DM/OA

\*Data only from abstract of congress.

†One cross-sectional study and one prospective study (the cross-sectional study was selected for analysis).

ACR, American College of Rheumatology criteria; CCHS, Canadian Community Health Survey; DM, diabetes mellitus; ELSID, Evaluation of a Large Scale Implementation of Disease Management Programmes for patients with type 2 diabetes; FBG, fasting blood glucose; Glyc, glycaemia; HANES I or NHANES III or KNHANES, The National Health and Nutrition Examination Survey I or III or Korean NHANES; HbA1c, glycosylated haemoglobin; ILSA, The Italian Longitudinal Study on Aging; KL, Kellgren and Lawrence scale; MBHMS, Michigan Bone Health & Metabolism Study; MCCS, The Melbourne Collaborative Cohort Study; MDC, the Malmo Diet and Cancer Study; MUST, Musculoskeletal pain in Ullensaker study; NEO, The Netherlands Epidemiology of Obesity study; NA, not available; NP DM/OA, number of patients with DM in the OA population only; NP OA/DM, number of patients with OA in the DM population only; NP2, number of patients with OA and/or DM in the disease group and control group → need to calculate prevalence and OR; OA1, Osteoarthritis Initiative; OA, osteoarthritis; PPBG, postprandial blood glucose; ROAD, Research on Osteoarthritis Against Disability; Rx, radiography; SORT, Study of osteoarthritis Real World Therapies; STROBE, Strengthening the Reporting of Observational Studies in Epidemiology (NA if the data were issued only from congress).

**Figure 2** Forest plot for osteoarthritis among patients with and without diabetes mellitus.



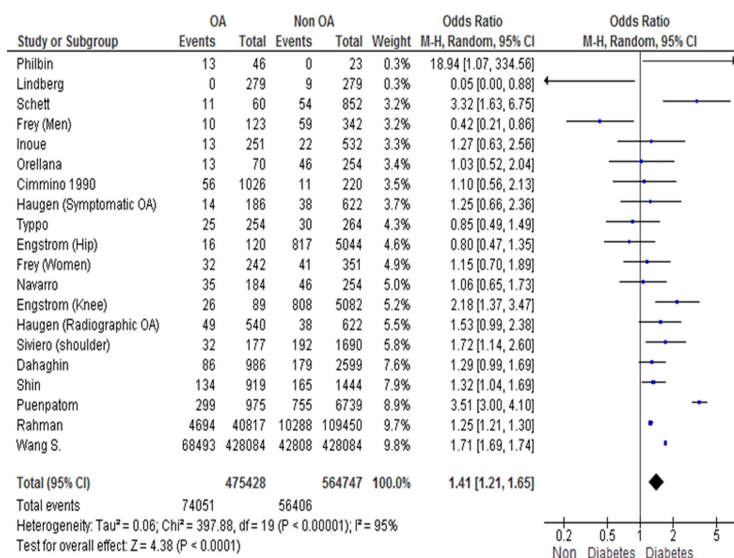
### Risk of OA in DM: meta-analysis and sensitivity analyses

For risk of OA in a DM versus non-DM population, among 32 137 patients, the overall OR was 1.46 (1.08 to 1.96), with high heterogeneity ( $I^2=88\%$ ; figure 2). After excluding poor-quality studies (ie, STROBE score <50%), the heterogeneity did not change ( $I^2=88\%$ ).<sup>55 31</sup> Considering only studies with validated criteria for diabetes including glycaemia or HbA1c and excluding studies with declarative data only, the OR was 1.58 (1.14 to 2.20), with similar heterogeneity ( $I^2=89\%$ ). Considering all studies with the same design (ie, cross-sectional, cohort or case-control studies), the OR was significant for only case-control studies (2.85 (1.71 to 4.73);  $I^2=0\%$ ).

Among OA risk factors, age and obesity have a strong impact on OA development. Considering only studies with patients  $\geq 50$  years old, the OR was 1.32 (1.13 to 1.53), without heterogeneity, which suggested that the association remained even in patients at increased risk of OA because of their age.<sup>25 34 36 42 46</sup>

Among the 12 studies with OR adjusted on BMI, 5 showed no association between DM and OA,<sup>16 25 27 48 49</sup>

**Figure 3** Forest Plot for DM among patients with and without OA (OA, osteoarthritis; DM, diabetes mellitus).



3 studies with surgery as an OA outcome corresponding to 11 805 patients); the OR was not significant: 1.32 (0.52 to 3.36) but with high heterogeneity ( $I^2=85\%$ ).<sup>10 48 59</sup> Third, we removed the studies that did not use internationally recognised diagnosis criteria for OA such as ACR criteria or the KL score for OA definition; the OR was 1.32 (1.13 to 1.53) without any heterogeneity ( $I^2=0\%$ ) with five studies and 9947 patients.<sup>20 25 42 50 58</sup> Fourth, we considered OA localisations: for data involving knee OA only or hip OA only, the results were significant for the knee (OR=1.51 (1.09 to 2.09) with 5 studies and 9102 patients) but not for the hip (OR=0.71 (0.49 to 1.04) with 3 studies and 6240 patients).<sup>10 20 31 34 42 48 59</sup> We also found a significant association for non-weight-bearing hand OA (OR=1.31 (1.07 to 1.61)). There was no study that included only generalised OA.

## DISCUSSION

OA is a heterogeneous disorder that can be separated in an age-related, metabolic and post-traumatic OA, representing thus the three main phenotypes of the disease. Metabolic OA is wider than obesity-related OA since MetS and OA are epidemiologically linked.<sup>2 7</sup> However, the association between each component of the MetS and OA needs to be further addressed. Likewise, we aimed to assess the overall link between OA and DM. We performed a systematic review of the literature and meta-analysis of data from 49 studies involving a large sample of participants (n=1 192 518). The prevalence of OA among patients with DM was  $29.5\pm 1.2\%$  and that of DM among patients with OA was  $14.4\pm 0.1\%$ . Moreover, OA and DM were significantly associated: the overall risk of OA in the DM population was 1.46 (1.08 to 1.96) and that of DM in the OA population was 1.41 (1.21 to 1.65).

In the DM population, the risk of OA was significant with overall data. All studies had approximately the same weight in the analysis. Such a result was confirmed in patients older than 50 years: DM seems to be associated with OA, even when age may have a significant impact on OA, which suggests that the link with DM does not depend on age.

In the OA population, the risk of DM was also significant (OR=1.41 (1.21 to 1.65)). Data from two studies had an important weight on this finding: DM prevalence in the OA group was 9.7% in the study of Rahman *et al.*<sup>61</sup> and 9.8% in the work of Wang *et al.*<sup>62</sup> coming from a congress abstract, and the definitive publication for this abstract will be critical to confirm these results. It can influence the final outcome, but the Rahman *et al.*<sup>61</sup> study was of good quality. The association of OA and DM was not significant when we considered only studies of severe OA (ie, time to joint replacement), probably because of the small number of patients.<sup>10 48 59</sup> The role of DM in progression of OA is controversial since Yoshimura *et al.*<sup>64</sup> have found that DM defined as HbA1c fraction  $\geq 5.5\%$  was not independently associated

with OA progression, whereas in a recent study type 2 DM was a significant predictor of joint space narrowing in males with symptomatic knee OA.<sup>65</sup>

In addition, recruitment bias at the time of joint replacement may explain the findings because the presence of comorbidities such as DM may restrict the indication for surgery in terms of a potential increase in subsequent perioperative adverse events. We found an especially significant association between DM and OA with the studies including hand OA only, which highlights the metabolic and systemic nature of hand OA, highlighted recently in the NEO cohort.<sup>53 66</sup> Moreover, the impact of DM on symptoms or on structural lesions might be different. Schett *et al.*<sup>67</sup> have shown that symptoms of OA assessed using the Knee injury and Osteoarthritis Outcome Score (KOOS) and the Western Ontario and McMaster Universities Arthritis Index (WOMAC) were more severe and ultrasound synovitis and effusion of knees more frequent in participants with type 2 DM than those without DM. This inflammatory aspect in imaging corroborates with the higher release of inflammatory mediators in OA cartilage explants from patients with DM than those from patients without DM.<sup>68</sup> The well control of DM by antidiabetic therapies could also influence the prevalence of OA: HbA1c fraction, that reflects the three last months of DM control, was significantly higher in women knee OA for Yoshimura *et al.*<sup>8 64</sup> and for Inoue *et al.*<sup>20</sup> However, we had no data about the history of the DM control during the previous years during which OA developed and progressed. Moreover, data about antidiabetic drugs were used only to identify patients with DM, but not as a factor able to influence OA occurrence or progression. The assessment of the radiographic patterns of DM-related OA (ie, erosive OA, diffuse idiopathic skeletal hyperostosis) was not possible due to a lack of data. The prevalence of OA in patients with DM was  $14.4\pm 0.1\%$ . We measured prevalence of DM among patients with OA, emphasising the link between both diseases. This prevalence could be compared with the prevalence of OA in the general population, but it depends on the reference population: 32% of OA in Iwaki Health Promotion Project (Japan) and 13% of OA in NHANES III (USA).<sup>7 20</sup> We lack basic data on the impact of OA on DM, but this remains to be investigated because of the possible systemic effects of OA.<sup>69</sup>

Our meta-analysis has some limitations. The heterogeneity was high in the first analyses, probably because of population characteristics (various OA localisations or definitions, various DM definitions, no stratification on DM severity or treatment) or various types and qualities of studies. However, we performed several sensitivity analyses, which allowed a decrease in the heterogeneity level, in particular in subgroups with a well-recognised definition of inclusion criteria of OA. To further decrease heterogeneity, we eliminated some studies: those that were of low quality or with a diagnosis of OA not based on ACR criteria or KL grading.<sup>39 41 54 60</sup>



However, the heterogeneity and results did not greatly change because of the low weight of these studies in the meta-analysis. Another limitation is the impact of confounding factors, especially age and obesity. However, despite a significant impact of increasing age on OA, the association remained positive when we retained studies including patients older than 50 years. Moreover, we identified seven studies showing an association even after adjustment on BMI in their multivariate logistic regression. The mean score of quality was better and most were recent (results published after 2009). Confounding factors such as joint injury, physical activity, smoking, hypertension, dyslipidaemia might have affected our findings, but these factors were taken into account in each included study.<sup>8–10</sup> In patients with DM, neuropathy may also affect OA development, but we did not find this information in the selected studies.

We have shown an association of DM and OA, but causality is not yet clearly demonstrated. Hyperglycaemia could promote joint inflammation and cartilage degradation through oxidative stress and inflammatory mediators induction as well as through AGEs.<sup>12</sup> Beyond a chronic excess of glucose, type 2 DM is characterised by increased insulin resistance that may be involved in osteophyte development and subchondral bone sclerosis.<sup>9–70–71</sup> We thus need additional specific prospective studies for that purpose.

In summary, this is the first meta-analysis showing an association of OA and DM, giving some additional clues about the delineation of the metabolic OA phenotype. Large prospective studies are needed to address whether DM is an independent risk factor of OA development or severity. If this is the case, new preventive and/or curative modalities based on glycaemia control could be tested in OA.

**Acknowledgements** The authors thank Laura SMALES (BioMed Editing, Toronto, Canada) for editing the manuscript. KL, FB and JS are supported by The Foundation Arthritis Network Program (ROAD project).

**Contributors** KL, JS and FB were involved in conception and design. KL was involved in acquisition of data and statistical analysis. KL, CV, JS and FB were involved in analyses and interpretation of data, drafting of the manuscript, revision of the manuscript and final approval. KL, JS and FB had full access to all of the data in the study and take responsibility for the integrity of the data and the accuracy of the data analysis.

**Competing interests** None.

**Provenance and peer review** Not commissioned; externally peer reviewed.

**Data sharing statement** No additional data are available.

**Open Access** This is an Open Access article distributed in accordance with the Creative Commons Attribution Non Commercial (CC BY-NC 4.0) license, which permits others to distribute, remix, adapt, build upon this work non-commercially, and license their derivative works on different terms, provided the original work is properly cited and the use is non-commercial. See: <http://creativecommons.org/licenses/by-nc/4.0/>

## REFERENCES

1. Yusuf E, Nelissen RG, Ioan-Facsinay A, *et al.* Association between weight or body mass index and hand osteoarthritis: a systematic review. *Ann Rheum Dis* 2010;69:761–5.

2. Bijlsma JW, Berenbaum F, Lafeber FP. Osteoarthritis: an update with relevance for clinical practice. *Lancet* 2011;377:2115–26.
3. Abella V, Scotece M, Conde J, *et al.* Adipokines, metabolic syndrome and rheumatic diseases. *J Immunol Res* 2014;2014:343746.
4. Chauffier K, Laiguillon MC, Bougault C, *et al.* Induction of the chemokine IL-8/Kc by the articular cartilage: possible influence on osteoarthritis. *Joint Bone Spine* 2012;79:604–9.
5. Laiguillon MC, Houard X, Bougault C, *et al.* Expression and function of visfatin (Nampt), an adipokine-enzyme involved in inflammatory pathways of osteoarthritis. *Arthritis Res Ther* 2014;16:R38.
6. Alberti KG, Zimmet P, Shaw J. The metabolic syndrome—a new worldwide definition. *Lancet* 2005;366:1059–62.
7. Puenpatom RA, Victor TW. Increased prevalence of metabolic syndrome in individuals with osteoarthritis: an analysis of NHANES III data. *Postgrad Med* 2009;121:9–20.
8. Yoshimura N, Muraki S, Oka H, *et al.* Association of knee osteoarthritis with the accumulation of metabolic risk factors such as overweight, hypertension, dyslipidemia, and impaired glucose tolerance in Japanese men and women: the ROAD study. *J Rheumatol* 2011;38:921–30.
9. Karvonen-Gutierrez CA, Sowers MR, Heeringa SG. Sex dimorphism in the association of cardiometabolic characteristics and osteophytes-defined radiographic knee osteoarthritis among obese and non-obese adults: NHANES III. *Osteoarthritis Cartilage* 2012;20:614–21.
10. Schett G, Kiechl S, Bonora E, *et al.* Vascular cell adhesion molecule 1 as a predictor of severe osteoarthritis of the hip and knee joints. *Arthritis Rheum* 2009;60:2381–9.
11. Waane H, Nevinsky D, Rosenthal J, *et al.* Association of osteoarthritis and diabetes mellitus. *Tufts Folia Med* 1961;7:13–19.
12. Berenbaum F. Diabetes-induced osteoarthritis: from a new paradigm to a new phenotype. *Ann Rheum Dis* 2011;70:1354–6.
13. Mobasheri A. Glucose: an energy currency and structural precursor in articular cartilage and bone with emerging roles as an extracellular signaling molecule and metabolic regulator. *Front Endocrinol (Lausanne)* 2012;3:153.
14. Verzijl N, Bank RA, TeKoppele JM, *et al.* AGEing and osteoarthritis: a different perspective. *Curr Opin Rheumatol* 2003;15:616–22.
15. Atayde SA, Yoshinari NH, Nascimento DP, *et al.* Experimental diabetes modulates collagen remodelling of joints in rats. *Histol Histopathol* 2012;27:1471–9.
16. Sturmer T, Brenner H, Brenner RE, *et al.* Non-insulin dependent diabetes mellitus (NIDDM) and patterns of osteoarthritis. The Ulm osteoarthritis study. *Scand J Rheumatol* 2001;30:169–71.
17. Frey MI, Barrett-Connor E, Sledge PA, *et al.* The effect of noninsulin dependent diabetes mellitus on the prevalence of clinical osteoarthritis. A population based study. *J Rheumatol* 1996;23:716–22.
18. von Elm E, Altman DG, Egger M, *et al.* [The Strengthening the Reporting of Observational Studies in Epidemiology (STROBE) statement: guidelines for reporting observational studies]. *Rev Esp Salud Publica* 2008;82:251–9.
19. Ray S, Datta AK, Sinhamahapatra P, *et al.* Prevalence of rheumatic conditions in patients with diabetes mellitus in a tertiary care hospital. *J Indian Med Assoc* 2011;109:74–8.
20. Inoue R, Ishibashi Y, Tsuda E, *et al.* Medical problems and risk factors of metabolic syndrome among radiographic knee osteoarthritis patients in the Japanese general population. *J Orthop Sci* 2011;16:704–9.
21. Lanas A, Tornero J, Zamorano JL. Assessment of gastrointestinal and cardiovascular risk in patients with osteoarthritis who require NSAIDs: the LOGICA study. *Ann Rheum Dis* 2010;69:1453–8.
22. Sarkar P, Pain S, Sarkar RN, *et al.* Rheumatological manifestations in diabetes mellitus. *J Indian Med Assoc* 2008;106:593–4.
23. Reeuwijk KG, de Rooij M, van Dijk GM, *et al.* Osteoarthritis of the hip or knee: which coexisting disorders are disabling? *Clin Rheumatol* 2010;29:739–47.
24. Miksch A, Hermann K, Rolz A, *et al.* Additional impact of concomitant hypertension and osteoarthritis on quality of life among patients with type 2 diabetes in primary care in Germany—a cross sectional survey. *Health Qual Life Outcomes* 2009;7:19.
25. Dahaghin S, Bierma-Zeinstra SM, Koes BW, *et al.* Do metabolic factors add to the effect of overweight on hand osteoarthritis? The Rotterdam Study. *Ann Rheum Dis* 2007;66:916–20.
26. Adams AL, Paxton EW, Wang JQ, *et al.* Surgical outcomes of total knee replacement according to diabetes status and glycemic control, 2001 to 2009. *J Bone Joint Surg Am* 2013;95:481–7.
27. Martin K, Lethbridge-Cejku M, Muller DC, *et al.* Metabolic correlates of obesity and radiographic features of knee osteoarthritis: data from the Baltimore Longitudinal Study of Aging. *J Rheumatol* 1997;24:702–7.

28. Shirinsky I, Shirinsky V. Diabetes effects on pain and physical function in incidence and progression subcohorts of the osteoarthritis initiative: a 5-year longitudinal data analysis. *EULAR Congress*; 2013;Abstract OP0026.
29. Hart DJ, Doyle DV, Spector TD. Association between metabolic factors and knee osteoarthritis in women: the Chingford Study. *J Rheumatol* 1995;22:1118–23.
30. Cimmino MA, Sarzi-Puttini P, Scarpa R, *et al.* Clinical presentation of osteoarthritis in general practice: determinants of pain in Italian patients in the AMICA study. *Semin Arthritis Rheum* 2005;35:17–23.
31. Typpo T. Osteoarthritis of the hip. Radiologic findings and etiology. *Ann Chir Gynaecol Suppl* 1985;201:1–38.
32. Magnusson K, Hagen KB, Osteras N, *et al.* Diabetes is associated with increased hand pain in erosive hand osteoarthritis—data from a population-based study. *Arthritis Care Res (Hoboken)* 2015;67:187–95.
33. Conaghan PG, Peloso PM, Everett SV, *et al.* Inadequate pain relief and large functional loss among patients with knee osteoarthritis: evidence from a prospective multinational longitudinal study of osteoarthritis real-world therapies. *Rheumatology (Oxford)* 2015;54:270–7.
34. Navarro N, Orellana C, Vasquez I, *et al.* High frequency of cardiovascular disease in patients with knee osteoarthritis in a primary care setting. *EULAR Congress*; 2012;Abstract SAT0320.
35. Zullig LL, Bosworth HB, Jeffreys AS, *et al.* The association of comorbid conditions with patient-reported outcomes in Veterans with hip and knee osteoarthritis. *Clin Rheumatol* 2014. Published Online First.
36. Orellana C, Navarro N, Calvet J, *et al.* Higher frequency of metabolic syndrome in patients with hand osteoarthritis is more pronounced in obese patients. *EULAR Congress*; 2012;Abstract FRI0305.
37. Bija MD, Luma HN, Temfack E, *et al.* Patterns of knee osteoarthritis in a hospital setting in sub-Saharan Africa. *Clin Rheumatol* 2014. Published Online First.
38. Anderson JJ, Felson DT. Factors associated with osteoarthritis of the knee in the first national Health and Nutrition Examination Survey (HANES I). Evidence for an association with overweight, race, and physical demands of work. *Am J Epidemiol* 1988;128:179–89.
39. Silveri F, Brecciaroli D, Argentati F, *et al.* Serum levels of insulin in overweight patients with osteoarthritis of the knee. *J Rheumatol* 1994;21:1899–902.
40. Perruccio AV, Kandel RA, Davis AM. Cardiovascular disease in osteoarthritis: hip versus knee and the influence of multiple symptomatic joint involvement. *ACR Congress*; 2013;Abstract 266.
41. Wang Y, Peng R, Ma R. Epidemiological investigation of osteoarthritis in middle-aged Mongolian and senior residents of the inner Mongolia autonomous region. *Iran Red Crescent Med J* 2013;15:e8303.
42. Shin D. Association between metabolic syndrome, radiographic knee osteoarthritis, and intensity of knee pain: results of a national survey. *J Clin Endocrinol Metab* 2014;99:3177–83.
43. Jansen E, Peltola M, Eskelinen A, *et al.* Comorbid diseases as predictors of survival of primary total hip and knee replacements: a nationwide register-based study of 96 754 operations on patients with primary osteoarthritis. *Ann Rheum Dis* 2012;72:1975–82.
44. Davies-Tuck ML, Wang Y, Wluka AE, *et al.* Increased fasting serum glucose concentration is associated with adverse knee structural changes in adults with no knee symptoms and diabetes. *Maturitas* 2012;72:373–8.
45. Baker C, Aileen L, Lavalley MP, *et al.* Automated telephone-linked communication: a novel approach to enhance long-term adherence to resistance training exercise among people with knee osteoarthritis. *ACR Congress*; 2013;Abstract 1818.
46. Siviero P, Tonin P, Maggi S. Functional limitations of upper limbs in older diabetic individuals. The Italian Longitudinal Study on Aging. *Aging Clin Exp Res* 2009;21:458–62.
47. Peniston JH, Gold MS, Wieman MS, *et al.* Long-term tolerability of topical diclofenac sodium 1% gel for osteoarthritis in seniors and patients with comorbidities. *Clin Interv Aging* 2012;7:517–23.
48. Engstrom G, Gerhardsson de Verdier M, Roloff J, *et al.* C-reactive protein, metabolic syndrome and incidence of severe hip and knee osteoarthritis. A population-based cohort study. *Osteoarthritis Cartilage* 2009;17:168–73.
49. Bagge E, Bjelle A, Eden S, *et al.* Factors associated with radiographic osteoarthritis: results from the population study 70-year-old people in Goteborg. *J Rheumatol* 1991;18:1218–22.
50. Haugen IK, Ramachandran VS, Misra D, *et al.* Hand osteoarthritis in relation to mortality and incidence of cardiovascular disease: data from the Framingham Heart Study. *Ann Rheum Dis* 2013;74:74–81.
51. Sowers M, Karvonen-Gutierrez CA, Palmieri-Smith R, *et al.* Knee osteoarthritis in obese women with cardiometabolic clustering. *Arthritis Rheum* 2009;61:1328–36.
52. Visser W, den Heijer M, Spoelman W, *et al.* Glucose and insulin concentration in association with hand osteoarthritis: the NEO study. *EULAR Congress*; 2013;Abstract SAT0350.
53. Visser AW, de Mutsert R, le Cessie S, *et al.* The relative contribution of mechanical stress and systemic processes in different types of osteoarthritis: the NEO study. *Ann Rheum Dis* 2014. Published Online First.
54. Philbin EF, Ries MD, Groff GD, *et al.* Osteoarthritis as a determinant of an adverse coronary heart disease risk profile. *J Cardiovasc Risk* 1996;3:529–33.
55. Ladjimi A, Youssef S, Chamakhi S, *et al.* [Rheumatologic manifestations in diabetes]. *Tunis Med* 1985;63:213–19.
56. Denko CW, Boja B, Moskowitz RW. Growth promoting peptides in osteoarthritis and diffuse idiopathic skeletal hyperostosis—insulin, insulin-like growth factor-I, growth hormone. *J Rheumatol* 1994;21:1725–30.
57. Nieves-Plaza M, Castro-Santana LE, Font YM, *et al.* Association of hand or knee osteoarthritis with diabetes mellitus in a population of Hispanics from Puerto Rico. *J Clin Rheumatol* 2013;19:1–6.
58. Cimmino MA, Cutolo M. Plasma glucose concentration in symptomatic osteoarthritis: a clinical and epidemiological survey. *Clin Exp Rheumatol* 1990;8:251–7.
59. Lindberg H, Nilsson BE. Coinciding morbidity in patients with coarthritis. An epidemiological study of roentgen examinations. *Arch Orthop Trauma Surg* 1985;104:82–4.
60. Dequeker J, Burssens A, Bouillon R. Dynamics of growth hormone secretion in patients with osteoporosis and in patients with osteoarthritis. *Horm Res* 1982;16:353–6.
61. Rahman MM, Kopec JA, Cibere J, *et al.* The relationship between osteoarthritis and cardiovascular disease in a population health survey: a cross-sectional study. *BMJ Open* 2013;3:pii: e002624
62. Wang S, Ganguli AX, Macaulay D, *et al.* The economic burden of osteoarthritis in Americans: analysis from a privately insured population. *ACR Congress*; 2013.
63. Horn CA, Bradley JD, Brandt KD, *et al.* Impairment of osteophyte formation in hyperglycemic patients with type II diabetes mellitus and knee osteoarthritis. *Arthritis Rheum* 1992;35:336–42.
64. Yoshimura N, Muraki S, Oka H, *et al.* Accumulation of metabolic risk factors such as overweight, hypertension, dyslipidaemia, and impaired glucose tolerance raises the risk of occurrence and progression of knee osteoarthritis: a 3-year follow-up of the ROAD study. *Osteoarthritis Cartilage* 2012;20:1217–26.
65. Eymard F, Parsons C, Edwards MH, *et al.* Diabetes is a risk factor for knee osteoarthritis progression. *Osteoarthritis Cartilage* 2015. Published Online First: 3 February 2015.
66. Sellam J, Berenbaum F. Is osteoarthritis a metabolic disease? *Joint Bone Spine* 2013;80:568–73.
67. Schett G, Kleyer A, Perricone C, *et al.* Diabetes is an independent predictor for severe osteoarthritis: results from a longitudinal cohort study. *Diabetes Care* 2013;36:403–9.
68. Laiguillon MC, Courties A, Houard X, *et al.* Characterization of diabetic osteoarthritic cartilage and role of high glucose environment on chondrocyte activation: toward pathophysiological delineation of diabetes mellitus-related osteoarthritis. *Osteoarthritis Cartilage* Published Online First: 15 May 2015. doi:10.1016/j.joca.2015.04.026
69. Berenbaum F, Eymard F, Houard X. Osteoarthritis, inflammation and obesity. *Curr Opin Rheumatol* 2013;25:114–18.
70. Okazaki K, Jinguishi S, Ikenoue T, *et al.* Expression of insulin-like growth factor I messenger ribonucleic acid in developing osteophytes in murine experimental osteoarthritis and in rats inoculated with growth hormone-secreting tumor. *Endocrinology* 1999;140:4821–30.
71. Massicotte F, Fernandes JC, Martel-Pelletier J, *et al.* Modulation of insulin-like growth factor 1 levels in human osteoarthritic subchondral bone osteoblasts. *Bone* 2006;38:333–41.