

SUPPLEMENTARY APPENDIX

Supplement to: Kristensen, LE, Ng KJ, Ngantcha M, *et al.*, [manuscript under review]. *RMD Open*. 2024.

SUPPLEMENTARY APPENDIX, Kristensen *et al.***Table of Contents**

Supplemental Methods	4
Supplemental Figure S1: Overall study sampling procedure.....	4
Supplemental Results	4
Supplemental baseline characteristics	4
Supplemental Table S1: Additional baseline characteristics of the full sample population (N=1192)	6
Supplemental Table S2: All baseline characteristics of the ON-LABEL sample population (N=1159)	8
Supplemental descriptive results (unadjusted and adjusted).....	11
Supplemental Table S3. Unadjusted and adjusted (descriptive, imputed) change from Baseline to Month 3 in clinical measures across ON-LABEL treatment groups (N=1159)	11
Supplemental Figure S2: Change from baseline in mean clinical Disease Activity in Psoriatic Arthritis (cDAPSA) scores of the full sample (N=1192) of real-world patients (descriptive, unadjusted)	13
Supplemental Figure S3: Change from baseline in mean affected body surface area (BSA) of the full sample (N=1192) of real-world patients (descriptive, unadjusted).....	14
Supplemental Figure S4: Unadjusted (A) and adjusted (B) change from baseline in mean clinical Disease Activity in Psoriatic Arthritis (cDAPSA) scores of the ON-LABEL subpopulation (N=1159) of real-world patients (descriptive).....	15
Supplemental Figure S5: Unadjusted (A) and adjusted (B) change from baseline in mean affected body surface area (BSA) of the on-label population (N=1159) of real-world patients (descriptive)	16
Supplemental comparative effectiveness results (adjusted)	17
Supplemental Figure S6: Comparative effectiveness between specific treatment groups of the ON-LABEL population.	17
<i>Ad hoc</i> analyses.....	18

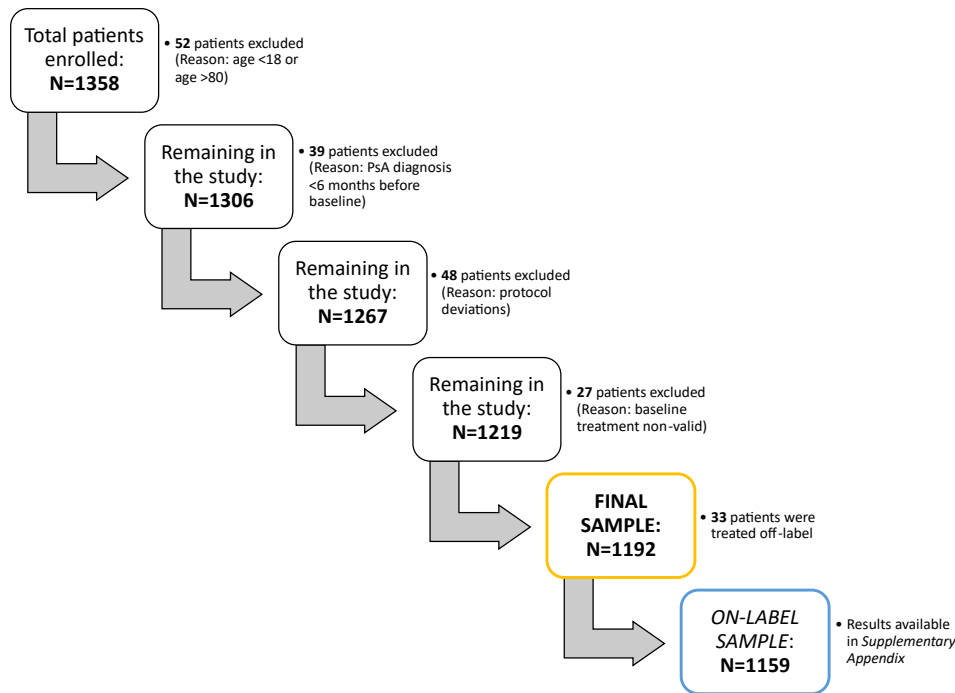
SUPPLEMENTARY APPENDIX, Kristensen *et al.*

Supplemental Figure S7A. Proportion of patients with Minimal Disease Activity (MDA) among those within the full sample who had a baseline affected body surface area (BSA) $\geq 3\%$	18
Supplemental Figure S7B. Proportion of patients with Minimal Disease Activity (MDA) among those within the full sample who had a baseline affected body surface area (BSA) $< 3\%$	18
Supplemental Figure S8A. Proportion of ON-LABEL patients with Minimal Disease Activity (MDA) among those who had a baseline affected body surface area (BSA) $\geq 3\%$	19
Supplemental Figure S8B. Proportion of ON-LABEL patients with Minimal Disease Activity (MDA) among those who had a baseline affected body surface area (BSA) $< 3\%$	19
Complete list of study investigators	20

SUPPLEMENTARY APPENDIX, Kristensen *et al.*

Supplemental Methods

Supplemental Figure S1: Overall study sampling procedure



Supplemental Results

Supplemental baseline characteristics

Across treatment groups, approximately half of the participants were actively employed. Median TJC scores (reported in the main text in **Table 1**) were similar across most groups at baseline (7.0 – 9.0), except in those initiating a PDE4i (5.0); median SJC scores were lower and similar across all groups (2.0 – 4.0). The highest mean TJC at baseline was observed in those initiating SEC 300 (12.7 ± 11.8) while the lowest was in those initiating a PDE4i (7.9 ± 9.5). The mean baseline SJC was highest in those initiating a JAKi (5.5 ± 7.2) and lowest in PDE4i (3.0 ± 4.1). At baseline, the group with the highest proportion of patients with MDA was those who were initiating an IL-12/23i (17.1 ± 0.1). Across all groups, baseline

SUPPLEMENTARY APPENDIX, Kristensen *et al.*

rates of enthesitis (25.7% - 57.1%) and the mean number of enthesal points (0.9 - 2.7) were higher than the rates of dactylitis (15.6% - 23.2%) and the mean number of affected digits (0.3 – 1.1). Rates of anxiety/depression (assessed in PsAID-12) were low across all groups (0% - 18.0%), with similar baseline treatment satisfaction between groups (4.9 - 5.6).

Additional baseline demographics and clinical characteristics are reported in **Supplemental Table S1**.

SUPPLEMENTARY APPENDIX, Kristensen *et al.*

Supplemental Table S1: Additional baseline characteristics of the full sample population (N=1192)

	bDMARDs								tsDMARDs	
	IL-17A inhibitors					Other			JAKi	PDE4i
	Ixekizumab	Secukinumab 150 mg	Secukinumab 300 mg	Secukinumab Total	IL-17Ai Total	TNFi	IL-12/23i	IL-23i		
	N=341	N=87	N=79	N=166	N=507	N=436	N=35	N=56	N=124	N=32
Employed	169 (49.6%)	45 (51.7%)	42 (53.2%)	87 (52.4%)	256 (50.5%)	248 (56.9%)	21 (60.0%)	27 (48.2%)	71 (57.3%)	16 (50.0%)
Education status										
No formal education	33 (9.7%)	8 (9.2%)	4 (5.1%)	12 (7.2%)	45 (8.9%)	28 (6.4%)	4 (11.4%)	3 (5.4%)	12 (9.7%)	4 (12.5%)
Minimum mandatory education	94 (27.6%)	31 (35.6%)	28 (35.4%)	59 (35.5%)	153 (30.2%)	143 (32.8%)	7 (20.0%)	13 (23.2%)	33 (26.6%)	5 (15.6%)
Less than university education	138 (40.5%)	29 (33.3%)	35 (44.3%)	64 (38.6%)	202 (39.8%)	162 (37.2%)	10 (28.6%)	32 (57.1%)	44 (35.5%)	13 (40.6%)
University education	76 (22.3%)	19 (21.8%)	12 (15.2%)	31 (18.7%)	107 (21.1%)	103 (23.6%)	14 (40.0%)	8 (14.3%)	35 (28.2%)	10 (31.3%)
Baseline treatment satisfaction, mean (SD)	5.6 (1.5) ^a	5.3 (1.3) ^b	5.4 (1.9) ^c	5.4 (1.6) ^d	5.5 (1.5) ^e	5.3 (1.4) ^f	5.3 (1.7) ^g	5.7 (1.4) ^h	5.3 (1.4) ⁱ	4.9 (1.4) ^j
Dactylitis										
0 digits affected	274 (80.4%)	68 (78.2%)	61 (77.2%)	129 (77.7%)	403 (79.5%)	353 (81.0%)	29 (82.9%)	43 (76.8%)	99 (79.8%)	27 (84.4%)
1 digit affected	22 (6.5%)	7 (8.0%)	7 (8.9%)	14 (8.4%)	36 (7.1%)	36 (8.3%)	4 (11.4%)	7 (12.5%)	13 (10.5%)	1 (3.1%)
2 digits affected	18 (5.3%)	3 (3.4%)	2 (2.5%)	5 (3.0%)	23 (4.5%)	20 (4.6%)	0	1 (1.8%)	5 (4.0%)	3 (9.4%)
3 digits affected	9 (2.6%)	2 (2.3%)	1 (1.3%)	3 (1.8%)	12 (2.4%)	10 (2.3%)	0	1 (1.8%)	1 (0.8%)	1 (3.1%)
4 digits affected	6 (1.8%)	4 (4.6%)	3 (3.8%)	7 (4.2%)	13 (2.6%)	4 (0.9%)	1 (2.9%)	2 (3.6%)	3 (2.4%)	0
5 digits affected	3 (0.9%)	0	0	0	3 (0.6%)	8 (1.8%)	0	0	0	0
6 digits affected	3 (0.9%)	1 (1.1%)	0	1 (0.6%)	4 (0.8%)	1 (0.2%)	1 (2.9%)	1 (1.8%)	2 (1.6%)	0
7 digits affected	1 (0.3%)	0	0	0	1 (0.2%)	1 (0.2%)	0	0	0	0
8 digits affected	0	1 (1.1%)	1 (1.3%)	2 (1.2%)	2 (0.4%)	1 (0.2%)	0	0	0	0
9 digits affected	1 (0.3%)	0	0	0	1 (0.2%)	0	0	0	0	0
10 digits affected	2 (0.6%)	0	2 (2.5%)	2 (1.2%)	4 (0.8%)	1 (0.2%)	0	1 (1.8%)	0	0
11 digits affected	0	1 (1.1%)	0	1 (0.6%)	1 (0.2%)	0	0	0	0	0
12 digits affected	0	0	1 (1.3%)	1 (0.6%)	0	1 (0.2%)	0	0	1 (0.8%)	0
13 digits affected	0	0	0	0	0	0	0	0	0	0
14 digits affected	0	0	0	0	0	0	0	0	0	0
15 digits affected	0	0	0	0	0	0	0	0	0	0
16 digits affected	0	0	0	0	0	0	0	0	0	0
17 digits affected	0	0	0	0	0	0	0	0	0	0
18 digits affected	1 (0.3%)	0	0	0	0	0	0	0	0	0
19 digits affected	0	0	0	0	0	0	0	0	0	0
20 digits affected	1 (0.3%)	0	1 (1.3%)	1 (0.6%)	2 (0.4%)	0	0	0	0	0
Presence of anxiety/depression	52 (15.2%)	13 (15.1%)	13 (14.9%)	26 (15.7%)	78 (15.4%)	50 (11.5%)	1 (2.9%)	9 (16.1%)	22 (17.7%)	5 (15.6%)
WPAI-PsA										
% Absenteeism, mean (SD)	12.8 (28.0) ^k	15.1 (28.8) ^l	23.2 (34.6) ^m	19.2 (31.9) ⁿ	15.0 (29.5) ^o	13.4 (29.5) ^p	11.8 (26.2) ^q	15.9 (28.6) ^r	10.1 (28.5) ^s	17.1 (34.7) ^t
% Presenteeism, mean (SD)	40.05 (28.9) ^u	34.9 (26.0) ^v	45.7 (30.5) ^w	40.1 (28.6) ^x	40.0 (28.7) ^y	37.2 (28.3) ^z	28.6 (28.3) ^{aa}	34.8 (32.5) ^{bb}	31.7 (30.0) ^{cc}	37.5 (28.9) ^{dd}
% Overall work impairment, mean (SD)	37.7 (25.2) ^k	33.9 (21.4) ^l	39.2 (25.8) ^m	36.6 (23.7) ⁿ	37.3 (24.6) ^o	35.4 (25.6) ^p	23.8 (21.3) ^q	32.3 (29.8) ^r	32.4 (29.0) ^s	37.8 (26.1) ^t
% Impairment in activities, mean (SD)	51.7 (25.4) ^u	50.7 (26.9) ^v	60.2 (22.5) ^w	55.3 (25.2) ^x	52.9 (25.3) ^y	49.2 (27.7) ^z	42.4 (26.4) ^{aa}	48.9 (28.3) ^{bb}	47.0 (27.9) ^{cc}	54.4 (29.0) ^{dd}

SUPPLEMENTARY APPENDIX, Kristensen *et al.*

All data are presented as n (%) unless otherwise stated.

^an=310, ^bn=78, ^cn=75, ^dn=153, ^en=463, ^fn=388, ^gn=32, ^hn=54, ⁱn=122, ^jn=27, ^kn=160, ^ln=41, ^mn=41, ⁿn=82, ^on=242, ^pn=238, ^qn=21, ^rn=26, ^sn=68, ^tn=15, ^un=169, ^vn=45, ^wn=42, ^xn=87, ^yn=256, ^zn=248, ^{aa}n=21, ^{bb}n=27, ^{cc}n=71, ^{dd}n=16.

bDMARD, biological DMARD; DMARD, disease-modifying anti-rheumatic drug; i, inhibitor; IL, interleukin; JAKi, Janus Kinase inhibitor; N/n, number of real-world patients; PDE4, phosphodiesterase 4; PsA, psoriatic arthritis; PsAID, Psoriatic Arthritis Impact of Disease score; SD, standard deviation; SE, standard error; TNF, tumour necrosis factor; tsDMARD, targeted synthetic DMARD; WPAI, Work Productivity and Activity Impairment index.

SUPPLEMENTARY APPENDIX, Kristensen *et al.*

Supplemental Table S2: All baseline characteristics of the ON-LABEL sample population (N=1159)

	bDMARDs								tsDMARDs	
	IL-17Ai				Other				JAKi	PDE4i
	Ixekizumab	Secukinumab 150 mg	Secukinumab 300 mg	Secukinumab Total	IL-17Ai Total	TNFi	IL-12/23i	IL-23i		
N=321	N=84	N=77	N=161	N=482	N=432	N=33	N=56	N=122	N=32	
Age, years, mean (SD)	53.9 (12.1)	53.8 (11.4)	51.0 (12.4)	52.5 (11.9)	53.4 (12.0)	51.0 (12.2)	50.3 (11.8)	52.7 (11.7)	52.9 (12.4)	54.8 (9.2)
< 65 years	259 (80.7%)	71 (84.5%)	69 (89.6%)	140 (87.0%)	399 (82.8%)	374 (86.6%)	29 (87.9%)	45 (80.4%)	101 (82.8%)	28 (87.5%)
≥ 65 years	62 (19.3%)	13 (15.5%)	8 (10.4%)	21 (13.0%)	83 (17.2%)	58 (13.4%)	4 (12.1%)	11 (19.6%)	21 (17.2%)	4 (12.5%)
Female	211 (65.7%)	57 (67.9%)	46 (59.7%)	103 (64.0%)	314 (65.1%)	260 (60.2%)	17 (51.5%)	33 (58.9%)	79 (64.8%)	20 (62.5%)
Country										
Canada	37 (11.5%)	12 (14.3%)	8 (10.4%)	20 (12.4%)	57 (11.8%)	39 (9.0%)	1 (3.0%)	12 (21.4%)	23 (18.9%)	0
France	46 (14.3%)	9 (10.7%)	8 (10.4%)	17 (10.6%)	63 (13.1%)	60 (13.9%)	4 (12.1%)	7 (12.5%)	23 (18.9%)	1 (3.1%)
Germany	90 (28.0%)	23 (27.4%)	14 (18.2%)	37 (23.0%)	127 (26.3%)	60 (13.9%)	6 (18.2%)	23 (41.1%)	44 (36.1%)	3 (9.4%)
Italy	93 (29.0%)	13 (15.5%)	15 (19.5%)	28 (17.4%)	121 (25.1%)	121 (28.0%)	7 (21.2%)	11 (19.6%)	2 (1.6%)	11 (34.4%)
Spain	36 (11.2%)	20 (23.8%)	16 (20.8%)	36 (22.4%)	72 (14.9%)	69 (16.0%)	10 (30.3%)	3 (5.4%)	15 (12.3%)	14 (43.8%)
United Kingdom	19 (5.9%)	7 (8.3%)	16 (20.8%)	23 (14.3%)	42 (8.7%)	83 (19.2%)	5 (15.2%)	0	15 (12.3%)	3 (9.4%)
BMI (kg/m²)										
< 18.5	5 (1.6%)	3 (3.6%)	2 (2.6%)	5 (3.1%)	10 (2.1%)	8 (1.9%)	1 (3.0%)	1 (1.8%)	1 (0.8%)	1 (3.1%)
18.5 – 25	73 (22.7%)	16 (19.0%)	11 (14.3%)	27 (16.8%)	100 (20.7%)	117 (27.1%)	12 (36.4%)	12 (21.4%)	33 (27.0%)	8 (25.0%)
25 – < 30	121 (37.7%)	26 (31.0%)	23 (29.9%)	49 (30.4%)	170 (35.3%)	143 (33.1%)	9 (27.3%)	15 (26.8%)	38 (31.1%)	12 (37.5%)
30 – < 35	71 (22.1%)	26 (31.0%)	21 (27.3%)	47 (29.2%)	118 (24.5%)	98 (22.7%)	7 (21.2%)	13 (23.2%)	28 (23.0%)	9 (28.1%)
≥ 35	51 (15.9%)	13 (15.5%)	20 (26.0%)	33 (20.5%)	84 (17.4%)	66 (15.3%)	4 (12.1%)	15 (26.8%)	22 (18.0%)	2 (6.3%)
Smoking status										
Never	165 (51.4%)	57 (67.9%)	42 (54.5%)	99 (61.5%)	264 (54.8%)	268 (62.0%)	19 (57.6%)	27 (48.2%)	63 (51.6%)	13 (40.6%)
Current	67 (20.9%)	9 (10.7%)	14 (18.2%)	23 (14.3%)	90 (18.7%)	73 (16.9%)	6 (18.2%)	13 (23.2%)	15 (12.3%)	8 (25.0%)
Former	89 (27.7%)	18 (21.4%)	21 (27.3%)	39 (24.2%)	128 (26.6%)	91 (21.1%)	8 (24.2%)	16 (28.6%)	44 (36.1%)	11 (34.4%)
Years since PsA diagnosis, mean (SD)	9.3 (8.6)	8.2 (8.9)	8.6 (7.5)	8.4 (8.2)	9.0 (8.5)	6.6 (7.3)	7.8 (8.9)	8.9 (8.1)	9.1 (7.6)	8.8 (7.7)
PsA and PsO diagnostic chronology										
PsA before/simultaneous with PsO	58 (18.1%)	11 (13.1%)	12 (15.6%)	23 (14.3%)	81 (16.8%)	66 (15.3%)	4 (12.1%)	12 (21.4%)	23 (18.9%)	5 (15.6%)
PsO before PsA	150 (46.7%)	39 (46.4%)	43 (55.8%)	82 (50.9%)	232 (48.1%)	209 (48.4%)	14 (42.4%)	32 (57.1%)	62 (50.8%)	20 (62.5%)
b/tsDMARD treatment experience										
b/tsDMARD naive	98 (30.5%)	39 (46.4%)	15 (19.5%)	54 (33.5%)	152 (31.5%)	298 (69.0%)	9 (27.3%)	13 (23.2%)	33 (27.0%)	25 (78.1%)
b/tsDMARD experienced	223 (69.5%)	45 (53.6%)	62 (80.5%)	107 (66.5%)	330 (68.5%)	134 (31.0%)	24 (72.7%)	43 (76.8%)	89 (73.0%)	7 (21.9%)
TNFi treatment experienced	136 (42.4%)	25 (29.8%)	48 (62.3%)	73 (45.3%)	209 (43.4%)	133 (30.8%)	14 (42.4%)	27 (48.2%)	45 (36.9%)	4 (12.5%)
Concomitant medications										
csDMARDs	114 (35.5%)	32 (38.1%)	29 (37.7%)	61 (37.9%)	175 (36.3%)	234 (54.2%)	7 (21.2%)	17 (30.4%)	58 (47.5%)	8 (25.0%)
Methotrexate	88 (27.4%)	29 (34.5%)	20 (26.0%)	49 (30.4%)	137 (28.4%)	179 (41.4%)	5 (15.2%)	13 (23.2%)	45 (36.9%)	6 (18.8%)
Corticosteroids	1 (0.3%)	0	0	0	1 (0.2%)	0	0	0	3 (2.5%)	0
Number of comorbidities										
0 (or missing)	165 (51.4%)	40 (47.6%)	36 (46.8%)	76 (47.2%)	241 (50.0%)	279 (64.6%)	17 (51.5%)	25 (44.6%)	59 (48.4%)	17 (53.1%)
1	88 (27.4%)	25 (29.8%)	21 (27.3%)	46 (28.6%)	134 (27.8%)	100 (23.1%)	11 (33.3%)	20 (35.7%)	36 (29.5%)	12 (37.5%)

SUPPLEMENTARY APPENDIX, Kristensen *et al.*

	bDMARDs								tsDMARDs	
	IL-17Ai					Other			JAKi	PDE4i
	Ixekizumab	Secukinumab 150 mg	Secukinumab 300 mg	Secukinumab Total	IL-17Ai Total	TNFi	IL-12/23i	IL-23i		
N=321	N=84	N=77	N=161	N=482	N=432	N=33	N=56	N=122	N=32	
2	39 (12.1%)	12 (14.3%)	12 (15.6%)	24 (14.9%)	63 (13.1%)	34 (7.9%)	4 (12.1%)	4 (7.1%)	14 (11.5%)	1 (3.1%)
3+	29 (9.0%)	7 (8.3%)	8 (10.4%)	15 (9.3%)	44 (9.1%)	19 (4.4%)	1 (3.0%)	7 (12.5%)	13 (10.7%)	2 (6.3%)
TJC (0-68), median (range)	8.0 (0 - 60)	7.0 (0 - 65)	9.0 (0 - 52)	8.0 (0 - 65)	8.0 (0 - 65)	7.0 (0 - 65)	6.0 (0 - 32)	8.0 (0 - 52)	8.5 (0 - 66)	5.0 (0 - 47)
TJC ≥ 5	217 (67.6%)	53 (63.1%)	52 (67.5%)	105 (65.2%)	322 (66.8%)	285 (66.0%)	20 (60.6%)	35 (62.5%)	89 (73.0%)	17 (53.1%)
SJC (0-66), median (range)	3.0 (0 - 35)	2.0 (0 - 26)	2.0 (0 - 39)	2.0 (0 - 39)	3.0 (0 - 39)	3.0 (0 - 31)	2.0 (0 - 24)	2.0 (0 - 21)	4.0 (0 - 53)	2.0 (0 - 17)
SJC ≥ 5	125 (38.9%)	30 (35.7%)	28 (36.4%)	58 (36.0%)	183 (38.0%)	172 (39.8%)	11 (33.3%)	16 (28.6%)	50 (41.0%)	7 (21.9%)
cDAPSA, mean (SE)	27.7 (0.9)	25.8 (1.6)	30.5 (2.2)	28.1 (1.3)	27.8 (0.7)	26.7 (0.8)	23.9 (2.8)	26.7 (2.0)	29.7 (1.6)	21.7 (2.4)
Remission (≤4)	3 (0.9%)	1 (1.2%)	1 (1.3%)	2 (1.2%)	5 (1.0%)	6 (1.4%)	2 (6.1%)	2 (3.6%)	2 (1.6%)	1 (3.1%)
Low Disease Activity (4 - ≤13)	46 (14.3%)	10 (11.9%)	10 (13.0%)	20 (12.4%)	66 (13.7%)	63 (14.6%)	7 (21.2%)	7 (12.5%)	10 (8.2%)	8 (25.0%)
Moderate Disease Activity (13 - ≤27)	148 (46.1%)	43 (51.2%)	31 (40.3%)	74 (46.0%)	222 (46.1%)	192 (44.4%)	14 (42.4%)	21 (37.5%)	50 (41.0%)	15 (46.9%)
High Disease Activity (>27)	124 (38.6%)	30 (35.7%)	35 (45.5%)	65 (40.4%)	189 (39.2%)	171 (39.6%)	10 (30.3%)	26 (46.4%)	60 (49.2%)	8 (25.0%)
% Affected BSA, mean (SD)	5.5 (10.4)	4.0 (9.6)	7.7 (16.2)	5.8 (13.2)	5.6 (11.4)	4.4 (9.5)	6.2 (8.9)	7.9 (12.7)	3.1 (8.3)	4.4 (5.4)
BSA < 3%	185 (57.6%)	52 (61.9%)	45 (58.4%)	97 (60.2%)	282 (58.5%)	284 (65.7%)	16 (48.5%)	25 (44.6%)	90 (73.8%)	16 (50.0%)
BSA ≥ 3%	136 (42.4%)	32 (38.1%)	32 (41.6%)	64 (39.8%)	200 (41.5%)	148 (34.3%)	17 (51.5%)	31 (55.4%)	32 (26.2%)	16 (50.0%)
Presence of axial manifestations	111 (34.6%)	36 (42.9%)	30 (39.0%)	66 (41.0%)	177 (36.7%)	160 (37.0%)	9 (27.3%)	11 (19.6%)	47 (38.5%)	7 (21.9%)
Presence of nail PsO	123 (38.3%)	34 (40.5%)	29 (37.7%)	63 (39.1%)	186 (38.6%)	158 (36.6%)	9 (27.3%)	28 (50.0%)	43 (35.2%)	15 (46.9%)
Presence of enthesitis	130 (40.5%)	26 (31.0%)	39 (50.6%)	65 (40.4%)	195 (40.5%)	179 (41.4%)	8 (24.2%)	32 (57.1%)	54 (44.3%)	12 (37.5%)
Enthesial points, mean (SD)	1.6 (2.6)	1.0 (2.0)	2.8 (3.9)	1.8 (3.2)	1.7 (2.8)	1.7 (2.9)	0.9 (2.0)	2.5 (3.3)	1.8 (3.0)	1.3 (2.1)
Presence of dactylitis	61 (19.0%)	19 (22.6%)	18 (23.4%)	37 (23.0%)	98 (20.3%)	83 (19.2%)	6 (18.2%)	13 (23.2%)	25 (20.5%)	5 (15.6%)
Digits affected, mean (SD)	0.6 (1.8)	0.7 (1.8)	1.1 (3.2)	0.9 (2.6)	0.7 (2.1)	0.5 (1.3)	0.4 (1.3)	0.6 (1.7)	0.5 (1.5)	0.3 (0.8)
Physician Global VAS, mean (SD)	61.6 (18.2)	61.1 (16.6)	61.6 (22.1)	61.3 (19.4)	61.5 (18.6)	60.7 (18.8)	56.8 (21.5)	56.9 (20.4)	60.9 (19.4)	54.3 (17.6)
Patient Global VAS, mean (SD)	60.4 (21.3)	60.2 (20.9)	63.3 (23.6)	61.7 (22.2)	60.8 (21.6)	57.5 (23.4)	54.5 (25.1)	63.1 (22.8)	60.8 (22.3)	53.3 (23.2)
Patient Assessment of Pain VAS, mean (SD)	62.8 (21.5)	60.5 (22.1)	66.2 (22.3)	63.2 (22.3)	62.9 (21.8)	59.2 (23.5)	51.0 (27.6)	61.6 (21.7)	62.7 (23.9)	54.2 (24.7)
HAQ-DI Total Score, mean (SD)	1.2 (0.6)	1.2 (0.7)	1.4 (0.7)	1.3 (0.7)	1.2 (0.7)	1.1 (0.7)	0.9 (0.7)	1.3 (0.7)	1.3 (0.7)	0.9 (0.6)
< 1.0	103 (32.1%)	35 (41.7%)	18 (23.4%)	53 (32.9%)	156 (32.4%)	178 (41.2%)	18 (54.5%)	17 (30.4%)	40 (32.8%)	15 (46.9%)
≥ 1.0	218 (67.9%)	49 (58.3%)	59 (76.6%)	108 (67.1%)	326 (67.6%)	254 (58.8%)	15 (45.5%)	39 (69.6%)	82 (67.2%)	17 (53.1%)
PsAID-12, mean (SD)	5.5 (1.9)^a	5.4 (1.8)^b	6.0 (1.9)^c	5.7 (1.9)^d	5.6 (1.9)^e	5.3 (2.0)^f	4.7 (2.3)	5.8 (2.1)^g	5.3 (2.0)^h	4.9 (2.2)ⁱ
Employed	157 (48.9%)	44 (52.4%)	42 (54.5%)	86 (53.4%)	243 (50.4%)	248 (57.4%)	20 (60.6%)	27 (48.2%)	69 (56.6%)	16 (50.0%)
Education status										
No formal education	31 (9.7%)	8 (9.5%)	4 (5.2%)	12 (7.5%)	43 (8.9%)	27 (6.3%)	4 (12.1%)	3 (5.4%)	11 (9.0%)	4 (12.5%)
Minimum mandatory education	88 (27.4%)	29 (34.5%)	27 (35.1%)	56 (34.8%)	144 (29.9%)	141 (32.6%)	7 (21.2%)	13 (23.2%)	33 (27.0%)	5 (15.6%)
Less than university education	133 (41.4%)	28 (33.3%)	34 (44.2%)	62 (38.5%)	195 (40.5%)	161 (37.3%)	9 (27.3%)	32 (57.1%)	43 (35.2%)	13 (40.6%)
University education	69 (21.5%)	19 (22.6%)	12 (15.6%)	31 (19.3%)	100 (20.7%)	103 (23.8%)	13 (39.4%)	8 (14.3%)	35 (28.7%)	10 (31.3%)
Baseline treatment satisfaction, mean (SD)	5.6 (1.5)^j	5.3 (1.4)^k	5.4 (1.9)^l	5.3 (1.6)^m	5.5 (1.6)ⁿ	5.3 (1.4)^o	5.3 (1.7)^p	5.7 (1.4)^q	5.4 (1.4)^r	4.9 (1.4)^s
Dactylitis										
0 digits affected	260 (81.0%)	65 (77.4%)	59 (76.6%)	124 (77.0%)	384 (79.7%)	349 (80.8%)	27 (81.8%)	43 (76.8%)	97 (79.5%)	27 (84.4%)
1 digit affected	20 (6.2%)	7 (8.3%)	7 (9.1%)	14 (8.7%)	34 (7.1%)	36 (8.3%)	4 (12.1%)	7 (12.5%)	13 (10.7%)	1 (3.1%)

SUPPLEMENTARY APPENDIX, Kristensen *et al.*

	bDMARDs								tsDMARDs	
	IL-17Ai					Other			JAKi	PDE4i
	Ixekizumab	Secukinumab 150 mg	Secukinumab 300 mg	Secukinumab Total	IL-17Ai Total	TNFi	IL-12/23i	IL-23i		
	N=321	N=84	N=77	N=161	N=482	N=432	N=33	N=56	N=122	N=32
2 digits affected	17 (5.3%)	3 (3.6%)	2 (2.6%)	5 (3.1%)	22 (4.6%)	20 (4.6%)	0	1 (1.8%)	5 (4.1%)	3 (9.4%)
3 digits affected	8 (2.5%)	2 (2.4%)	1 (1.3%)	3 (1.9%)	11 (2.3%)	10 (2.3%)	0	1 (1.8%)	1 (0.8%)	1 (3.1%)
4 digits affected	5 (1.6%)	4 (4.8%)	3 (3.9%)	7 (4.3%)	12 (2.5%)	4 (0.9%)	1 (3.0%)	2 (3.6%)	3 (2.5%)	0
5 digits affected	3 (0.9%)	0	0	0	3 (0.6%)	8 (1.9%)	0	0	0	0
6 digits affected	3 (0.9%)	1 (1.2%)	0	1 (0.6%)	4 (0.8%)	1 (0.2%)	1 (3.0%)	1 (1.8%)	2 (1.6%)	0
7 digits affected	1 (0.3%)	0	0	0	1 (0.2%)	1 (0.2%)	0	0	0	0
8 digits affected	0	1 (1.2%)	1 (1.3%)	2 (1.2%)	2 (0.4%)	1 (0.2%)	0	0	0	0
9 digits affected	1 (0.3%)	0	0	0	1 (0.2%)	0	0	0	0	0
10 digits affected	2 (0.6%)	0	2 (2.6%)	2 (1.2%)	4 (0.8%)	1 (0.2%)	0	1 (1.8%)	0	0
11 digits affected	0	1 (1.2%)	0	1 (0.6%)	1 (0.2%)	0	0	0	0	0
12 digits affected	0	0	1 (1.3%)	1 (0.6%)	1 (0.2%)	1 (0.2%)	0	0	1 (0.8%)	0
13 digits affected	0	0	0	0	0	0	0	0	0	0
14 digits affected	0	0	0	0	0	0	0	0	0	0
15 digits affected	0	0	0	0	0	0	0	0	0	0
16 digits affected	0	0	0	0	0	0	0	0	0	0
17 digits affected	0	0	0	0	0	0	0	0	0	0
18 digits affected	0	0	0	0	0	0	0	0	0	0
19 digits affected	0	0	0	0	0	0	0	0	0	0
20 digits affected	1 (0.3%)	0	1 (1.3%)	1 (0.6%)	2 (0.4%)	0	0	0	0	0
Presence of anxiety/depression	48 (15.0%)	13 (15.5%)	13 (16.9%)	26 (16.1%)	74 (15.4%)	50 (11.6%)	1 (3.0%)	9 (16.1%)	22 (18.0%)	5 (15.6%)
WPAI-PsA, mean (SD)										
% Absenteeism	12.8 (28.0) ^t	15.5 (29.1) ^u	23.2 (34.6) ^v	19.4 (32.0) ^w	15.2 (29.6) ^x	13.4 (29.5) ^y	12.4 (26.7) ^z	15.9 (28.6) ^{aa}	8.9 (26.6) ^{bb}	17.1 (34.7) ^{cc}
% Presenteeism	39.4 (28.8) ^{dd}	34.8 (26.3) ^{ee}	45.7 (30.5) ^{ff}	40.1 (28.8) ^{gg}	39.6 (28.8) ^{hh}	37.2 (28.3) ⁱⁱ	28.5 (29.1) ^{jj}	34.8 (32.5) ^{kk}	31.7 (30.0) ^{ll}	37.5 (28.9) ^{mm}
% Overall work impairment	37.0 (24.9) ^t	33.8 (21.7) ^u	39.2 (25.8) ^v	36.5 (23.8) ^w	36.9 (24.5) ^x	35.4 (25.6) ^y	23.5 (21.8) ^z	32.3 (29.8) ^{aa}	32.5 (29.0) ^{bb}	37.8 (26.1) ^{cc}
% Impairment in activities	51.4 (25.4) ^{dd}	50.9 (27.2) ^{ee}	60.2 (22.5) ^{ff}	55.5 (25.3) ^{gg}	52.8 (25.4) ^{hh}	49.2 (27.7) ⁱⁱ	41.5 (26.8) ^{jj}	48.9 (28.3) ^{kk}	47.1 (27.7) ^{ll}	54.4 (29.0) ^{mm}

All data are presented as n (%) unless otherwise stated.

^an=315, ^bn=82, ^cn=76, ^dn=158, ^en=473, ^fn=423, ^gn=55, ^hn=119, ⁱn=31, ^jn=290, ^kn=76, ^ln=73, ^mn=149, ⁿn=439, ^on=384, ^pn=30, ^qn=54, ^rn=120, ^sn=27, ^tn=148, ^un=40, ^vn=41, ^wn=81, ^xn=229, ^yn=238, ^zn=20, ^{aa}n=26, ^{bb}n=66, ^{cc}n=15, ^{dd}n=157, ^{ee}n=44, ^{ff}n=42, ^{gg}n=86, ^{hh}n=243, ⁱⁱn=248, ^{jj}n=20, ^{kk}n=27, ^{ll}n=69, ^{mm}n=16.

bDMARD, biological DMARD; b/tsDMARD, bDMARD or tsDMARD; BMI, body mass index; BSA, body surface area; cDAPSA, Clinical Disease Activity in Psoriatic Arthritis; DMARD, disease-modifying anti-rheumatic drug; HAQ-DI, Health Assessment Questionnaire-Disability Index score; i, inhibitor; IL, interleukin; JAKi, Janus Kinase inhibitor; n/N, number of real-world patients; PDE4, phosphodiesterase 4; PsA, psoriatic arthritis; PsAID, Psoriatic Arthritis Impact of Disease score; SD, standard deviation; SE, standard error; SJ, swollen joint count; TJ, tender joint count; TNF, tumour necrosis factor; tsDMARD, targeted synthetic DMARD; VAS, visual analogue scale (mm); WPAI, Work Productivity and Activity Impairment index.

SUPPLEMENTARY APPENDIX, Kristensen *et al.*

Supplemental descriptive results (unadjusted and adjusted)

Supplemental Table S3. Unadjusted and adjusted (descriptive, imputed) change from Baseline to Month 3 in clinical measures across ON-LABEL treatment groups (N=1159)

	bDMARDs								tsDMARDs	
	IL-17A inhibitors					Other			JAKi	PDE4i
	Ixekizumab	Secukinumab 150 mg	Secukinumab 300 mg	Secukinumab Total	IL-17Ai Total	TNFi	IL-12/23i	IL-23i		
	N=321	N=84	N=77	N=161	N=482	N=432	N=33	N=56	N=122	N=32
CFB in TJC, mean (SE)	-4.3 (0.6)	-4.0 (0.8)	-3.1 (1.2)	-3.6 (0.7)	-4.0 (0.5)	-4.3 (0.4)	-1.0 (1.6)	-3.9 (1.3)	-5.1 (1.1)	-2.5 (1.8)
Baseline	10.4 (9.3–11.6)	9.4 (7.3–11.5)	12.8 (10.1–15.5)	11.0 (9.3–12.7)	10.6 (9.7–11.6)	10.3 (9.3–11.4)	9.1 (5.7–12.5)	10.6 (7.6–13.7)	11.8 (9.8–13.8)	7.9 (4.5–11.3)
3-months	6.1 (5.0–7.1)	5.3 (3.7–6.9)	9.2 (6.2–12.2)	7.1 (5.5–8.8)	6.4 (5.5–7.3)	6.2 (5.4–7.1)	8.0 (4.3–11.8)	6.7 (4.7–8.8)	6.8 (4.8–8.9)	5.6 (2.9–8.3)
CFB in SJC, mean (SE)	-2.7 (0.3)	-1.9 (0.6)	-1.9 (0.6)	-1.9 (0.4)	-2.4 (0.3)	-2.7 (0.3)	-1.0 (1.0)	-1.1 (0.5)	-3.1 (0.6)	-1.7 (0.9)
Baseline	4.9 (4.2–5.6)	4.3 (3.2–5.4)	4.8 (3.3–6.3)	4.5 (3.6–5.4)	4.8 (4.3–5.3)	4.7 (4.2–5.2)	4.3 (2.2–6.3)	3.6 (2.4–4.8)	5.6 (4.3–6.9)	3.0 (1.6–4.5)
3-months	2.2 (1.7–2.6)	2.4 (1.3–3.5)	2.8 (1.8–3.8)	2.6 (1.9–3.3)	2.3 (1.9–2.7)	2.0 (1.7–2.3)	3.4 (1.6–5.3)	2.3 (1.3–3.4)	2.5 (1.7–3.3)	1.2 (0.4–2.0)
CFB in cDAPSA, mean (SE)	-11.0 (0.9)	-10.2 (1.4)	-9.2 (1.7)	-9.8 (1.1)	-10.6 (0.7)	-10.5 (0.7)	-2.3 (2.7)	-7.5 (1.9)	-12.0 (1.5)	-7.3 (2.7)
Baseline	27.7 (25.9–29.4)	25.8 (22.7–28.9)	30.5 (26.2–34.8)	28.1 (25.4–30.7)	27.8 (26.3–29.2)	26.7 (25.2–28.2)	23.9 (18.2–29.7)	26.7 (22.8–30.6)	29.7 (26.5–32.8)	21.7 (16.7–26.6)
3-months	16.4 (14.8–18.0)	15.5 (12.7–18.2)	20.6 (16.5–24.7)	17.9 (15.4–20.3)	16.9 (15.6–18.2)	16.3 (15.1–17.6)	21.6 (15.4–27.7)	19.1 (15.8–22.3)	17.8 (14.9–20.8)	14.6 (10.4–18.9)
Adjusted¹ CFB in cDAPSA, mean (SE)	-11.0 (0.7)	-11.0 (1.3)	-7.9 (1.4)	-9.6 (1.0)	-10.5 (0.6)	-10.7 (0.6)	-4.1 (2.3)	-7.8 (1.6)	-10.7 (1.1)	-10.0 (2.3)
CFB in % BSA, mean (SE)	-3.2 (0.6)	-1.9 (0.9)	-5.1 (1.6)	-3.4 (0.9)	-3.3 (0.5)	-1.5 (0.5)	-2.1 (1.5)	-4.1 (1.6)	-1.4 (0.6)	-1.7 (1.2)
Baseline	5.5 (4.3–6.6)	4.0 (1.9–6.0)	7.7 (4.1–11.4)	5.8 (3.7–7.8)	5.6 (4.5–6.6)	4.4 (3.5–5.3)	6.2 (3.0–9.3)	7.9 (4.5–11.3)	3.1 (1.6–4.6)	4.4 (2.5–6.4)
3-months	2.4 (1.8–2.9)	2.1 (1.3–3.0)	3.2 (1.8–4.5)	2.6 (1.8–3.4)	2.4 (2.0–2.9)	2.8 (2.2–3.5)	4.4 (2.0–6.9)	3.9 (2.0–5.8)	1.7 (0.9–2.5)	2.8 (1.3–4.2)
Shift ≥3% to <3%, n(%)	79 (58.1)	16 (50.0)	13 (40.6)	29 (45.3)	108 (54.0)	62 (41.9)	4 (23.5)	14 (45.2)	17 (53.1)	5 (31.3)
Adjusted² CFB in % BSA, mean (SE)	-2.9 (0.3)	-2.8 (0.6)	-2.7 (0.7)	-2.7 (0.5)	-2.9 (0.3)	-2.2 (0.3)	-1.0 (1.1)	-1.9 (0.8)	-3.0 (0.5)	-2.3 (1.1)
CFB in PatGA, mean (SE)	-19.8 (1.5)	-22.5 (2.9)	-19.9 (3.5)	-21.3 (2.2)	-20.3 (1.3)	-16.9 (1.4)	-4.3 (5.6)	-13.9 (3.9)	-18.3 (2.5)	-15.1 (5.5)
Baseline	60.4 (58.1–62.8)	60.2 (55.7–64.7)	63.3 (57.9–68.6)	61.7 (58.2–65.1)	60.8 (58.9–62.8)	57.5 (55.3–59.7)	54.5 (45.6–63.4)	63.1 (57.0–69.2)	60.8 (56.8–64.8)	53.3 (44.9–61.7)
3-months	40.3 (37.2–43.4)	37.7 (31.6–43.8)	42.7 (36.5–48.9)	40.0 (35.7–44.4)	40.2 (37.7–42.7)	40.6 (37.9–43.3)	50.2 (39.1–61.3)	49.6 (42.4–56.8)	42.2 (37.5–47.0)	38.3 (27.0–49.7)
CFB in PhysGA, mean (SE)	-26.5 (1.5)	-22.1 (3.1)	-21.4 (3.2)	-21.8 (2.2)	-24.9 (1.3)	-24.6 (1.4)	-10.3 (5.3)	-20.0 (3.3)	-24.8 (2.5)	-20.0 (5.0)
Baseline	61.6 (59.6–63.6)	61.1 (57.5–64.7)	61.6 (56.6–66.7)	61.3 (58.3–64.4)	61.5 (59.9–63.2)	60.7 (58.9–62.5)	56.8 (49.1–64.4)	56.9 (51.4–62.3)	60.9 (57.4–64.3)	54.3 (48.0–60.7)
3-months	35.2 (32.6–37.9)	38.9 (33.3–44.5)	40.0 (34.5–45.5)	39.4 (35.5–43.3)	36.6 (34.4–38.9)	36.3 (33.8–38.8)	45.9 (36.5–55.3)	37.1 (30.7–43.4)	35.8 (31.6–40.0)	32.9 (23.4–42.5)
CFB in Pain, mean (SE)	-21.0 (1.5)	-20.6 (3.3)	-21.9 (3.2)	-21.2 (2.3)	-21.0 (1.3)	-18.3 (1.4)	1.5 (4.7)	-10.9 (3.5)	-19.7 (2.6)	-15.2 (5.7)
Baseline	62.8 (60.4–65.1)	60.5 (55.8–65.3)	66.2 (61.1–71.2)	63.2 (59.8–66.7)	62.9 (61.0–64.9)	59.2 (57.0–61.4)	51.0 (41.2–60.8)	61.6 (55.8–67.5)	62.7 (58.4–67.0)	54.2 (45.3–63.1)
3-months	41.3 (38.1–44.5)	39.8 (33.5–46.1)	43.6 (37.5–49.7)	41.6 (37.2–46.0)	41.4 (38.8–44.0)	40.9 (38.2–43.7)	51.0 (40.1–61.7)	50.8 (43.5–58.1)	42.8 (37.8–47.8)	39.9 (28.4–51.4)
CFB HAQ-DI, mean (SE)	-0.3 (0.0)	-0.3 (0.1)	-0.3 (0.1)	-0.3 (0.0)	-0.3 (0.0)	-0.3 (0.0)	0.0 (0.1)	-0.2 (0.1)	-0.3 (0.1)	-0.2 (0.1)
Baseline	1.2 (1.1–1.3)	1.2 (1.0–1.3)	1.4 (1.2–1.5)	1.3 (1.2–1.4)	1.2 (1.2–1.3)	1.1 (1.1–1.2)	0.9 (0.6–1.1)	1.3 (1.1–1.5)	1.3 (1.2–1.4)	0.9 (0.7–1.2)
3-months	0.9 (0.9–1.0)	0.9 (0.8–1.1)	1.0 (0.9–1.2)	1.0 (0.9–1.1)	0.9 (0.9–1.0)	0.9 (0.8–0.9)	0.9 (0.6–1.1)	1.2 (1.0–1.4)	1.0 (0.9–1.1)	0.7 (0.5–1.0)
MDA, % response (95% CI)										
Baseline	4.4 (2.1–6.6)	6.0 (0.9–11.0)	5.2 (0.2–10.2)	5.6 (2.0–9.1)	4.8 (2.9–6.7)	6.9 (4.6–9.3)	18.2 (5.0–31.3)	3.6 (0.0–8.4)	6.6 (2.2–11.0)	6.3 (0.0–14.6)

SUPPLEMENTARY APPENDIX, Kristensen *et al.*

	bDMARDs								tsDMARDs	
	IL-17A inhibitors					Other			JAKi	PDE4i
	Ixekizumab	Secukinumab 150 mg	Secukinumab 300 mg	Secukinumab Total	IL-17Ai Total	TNFi	IL-12/23i	IL-23i		
N=321	N=84	N=77	N=161	N=482	N=432	N=33	N=56	N=122	N=32	
3-months	25.8 (20.7 – 31.0)	27.6 (17.3 – 37.9)	18.7 (9.5 – 27.8)	23.5 (16.5 – 30.5)	25.0 (20.9 – 29.2)	25.9 (21.5 – 30.3)	23.8 (8.4 – 39.2)	17.7 (7.1 – 28.4)	24.6 (16.4 – 32.8)	35.4 (16.8 – 54.0)
MDA among patients with baseline BSA <3%:										
Baseline	3.8 (1.0 – 6.5) ^a	9.6 (1.6 – 17.6) ^b	6.7 (0.0 – 14.0) ^c	8.2 (2.8 – 13.7) ^d	5.3 (2.7 – 7.9) ^e	8.8 (5.5 – 12.1) ^f	6.3 (0.0 – 18.1) ^g	8.0 (0.0 – 18.6) ^h	8.9 (3.0 – 14.8) ⁱ	6.3 (0.0 – 18.1) ^j
3-months	24.4 (17.7 – 31.0) ^a	25.7 (13.2 – 38.2) ^b	12.9 (2.3 – 23.6) ^c	20.1 (11.5 – 28.6) ^d	22.9 (17.6 – 28.2) ^e	26.0 (20.5 – 31.4) ^f	7.6 (0.0 – 21.8) ^g	15.7 (0.6 – 30.8) ^h	29.5 (19.4 – 39.6) ⁱ	29.3 (4.3 – 54.2) ^j
MDA among patients with baseline BSA ≥3%:										
Baseline	5.1 (1.4 – 8.9) ^k	0.0 (0.0) ^l	3.1 (0.0 – 9.2) ^m	1.6 (0.0 – 4.6) ⁿ	4.0 (1.3 – 6.7) ^o	3.4 (0.5 – 6.3) ^p	29.4 (7.8 – 51.1) ^q	0.0 (0.0) ^r	0.0 (0.0) ^s	6.3 (0.0 – 18.1) ^t
3-months	27.8 (19.7 – 35.9) ^k	30.7 (13.4 – 48.1) ^l	25.9 (10.5 – 41.3) ^m	28.3 (16.7 – 39.9) ⁿ	27.9 (21.3 – 34.6) ^o	25.8 (18.3 – 33.2) ^p	37.2 (13.4 – 60.9) ^q	19.4 (4.6 – 34.2) ^r	10.9 (0.0 – 22.6) ^s	41.1 (14.5 – 67.7) ^t
Month 3 cDAPSA, n (%)										
Remission (≤4)	38 (12.5%)	13 (15.7%)	10 (13.9%)	23 (14.8%)	61 (13.3%)	56 (13.6%)	5 (16.1%)	4 (7.4%)	16 (13.7%)	5 (17.2%)
Low DA (>4 - ≤13)	96 (31.5%)	25 (30.1%)	18 (25.0%)	43 (27.7%)	139 (30.2%)	119 (29.0%)	6 (19.4%)	13 (24.1%)	37 (31.6%)	7 (24.1%)
Moderate DA (>13 - ≤27)	133 (43.6%)	34 (41.0%)	26 (36.1%)	60 (38.7%)	193 (42.0%)	184 (44.8%)	10 (32.3%)	27 (50.0%)	42 (35.9%)	14 (48.3%)
High DA (>27)	38 (12.5%)	11 (13.3%)	18 (25.0%)	29 (18.7%)	67 (14.6%)	52 (12.7%)	10 (32.3%)	10 (18.5%)	22 (18.8%)	3 (10.3%)

All data presented as mean (95% confidence interval) unless otherwise stated. 'Pain' refers to the (joint) Pain visual analogue scale (VAS), a patient-reported outcome.

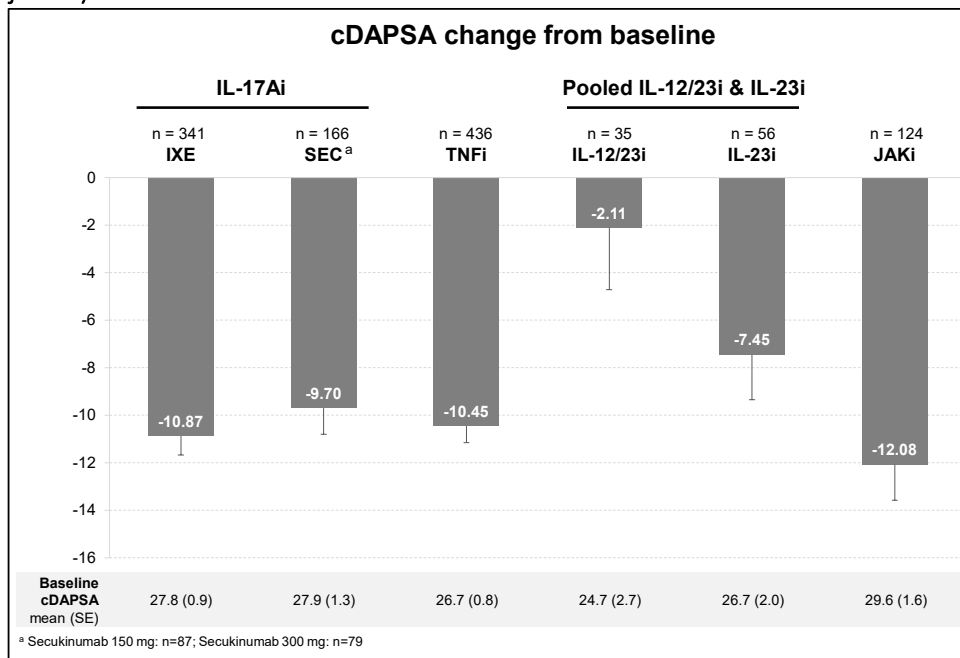
^{1,2}Adjusted for between-group comparison through the use of MMRM to account for baseline differences in cDAPSA¹ or BSA².

^an=185, ^bn=52, ^cn=45, ^dn=97, ^en=282, ^fn=284, ^gn=16, ^hn=25, ⁱn=90, ^jn=16, ^kn=136, ^ln=32, ^mn=32, ⁿn=64, ^on=200, ^pn=148, ^qn=17, ^rn=31, ^sn=32, ^tn=16.

BSA, body surface area; cDAPSA, clinical Disease Activity in Psoriatic Arthritis; CI, confidence interval; CFB, change from baseline; DA, disease activity; HAQ-DI, Health Assessment Questionnaire Disability Index; MDA, minimal disease activity; MMRM, mixed model for repeated measures; n/N, number; PatGA, patient global assessment; PhysGA, physician global assessment; SE, standard error; SJC, swollen joint count; TJC, tender joint count.

SUPPLEMENTARY APPENDIX, Kristensen *et al.*

Supplemental Figure S2: Change from baseline in mean clinical Disease Activity in Psoriatic Arthritis (cDAPSA) scores of the full sample (N=1192) of real-world patients (descriptive, unadjusted)

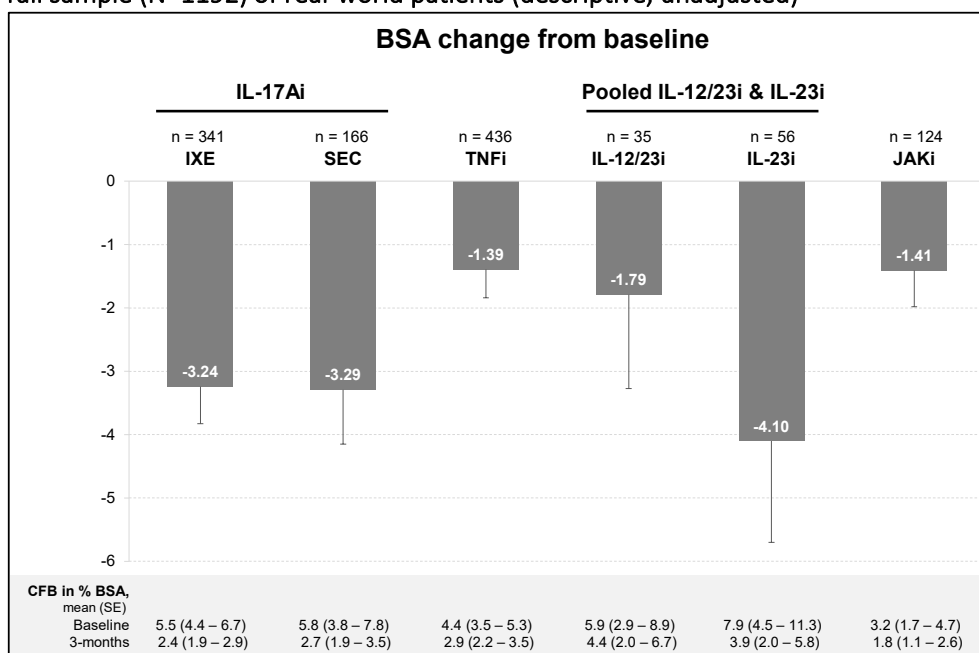


All data presented as mean (95% CI). SEC 150 (N=87; mean [95% CI]= -10.06% [-12.71% – -7.42%]) and SEC 300 (N=79; -9.29% [-12.64% – -5.94%]) pooled together for data visualization purposes.

cDAPSA, clinical Disease Activity in Psoriatic Arthritis; CI, confidence interval; IL, interleukin; IXE, ixekizumab; JAKi, Janus kinase inhibitor; n/N, number of real-world patients; PsA, psoriatic arthritis; SEC, secukinumab.

SUPPLEMENTARY APPENDIX, Kristensen *et al.*

Supplemental Figure S3: Change from baseline in mean affected body surface area (BSA) of the full sample (N=1192) of real-world patients (descriptive, unadjusted)

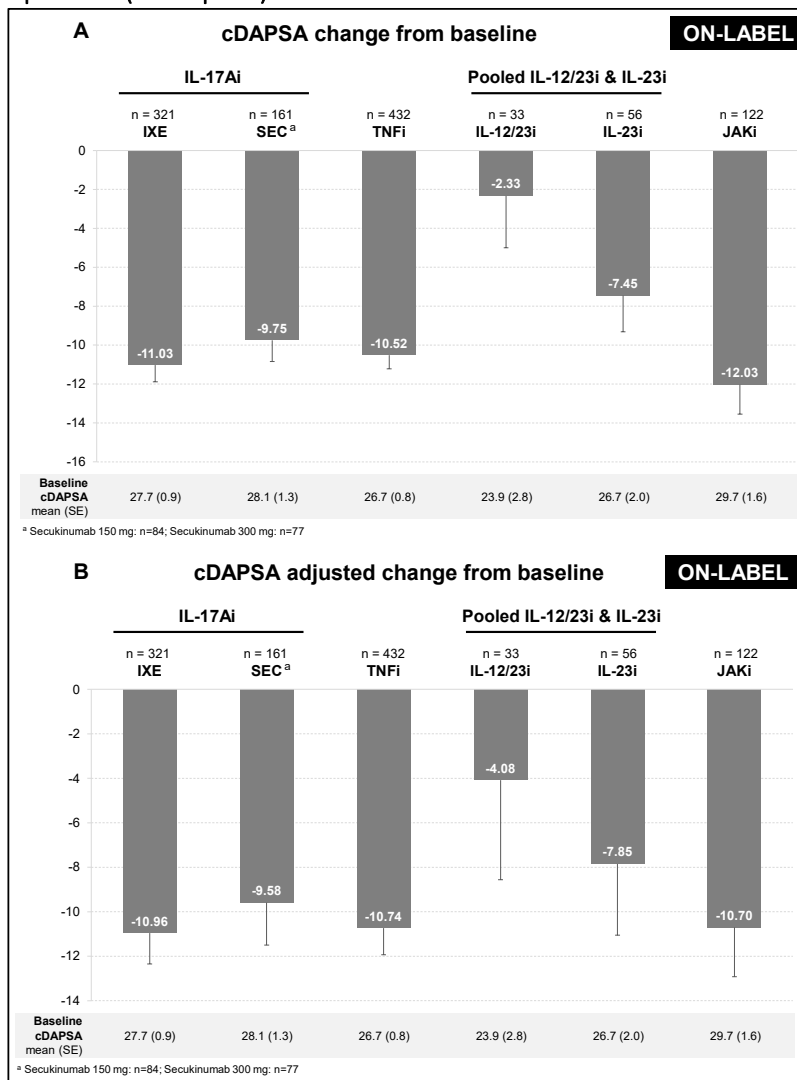


All data presented as mean (95% CI). Adjusted for between-group comparison through the use of MMRM to account for baseline differences in mean BSA. SEC 150 (N=87; mean [95% CI]= -3.24% [-4.39% – -2.09%]) and SEC 300 (N=79; -5.07% [-8.08% – -2.06%]) pooled together for data visualization purposes.

BSA, body surface area; CI, confidence interval; IL, interleukin; IXE, ixekizumab; JAKi, Janus kinase inhibitor; MMRM, mixed model for repeated measures; n/N, number of real-world patients; PsA, psoriatic arthritis; SEC, secukinumab.

SUPPLEMENTARY APPENDIX, Kristensen *et al.*

Supplemental Figure S4: Unadjusted (A) and adjusted (B) change from baseline in mean clinical Disease Activity in Psoriatic Arthritis (cDAPSA) scores of the ON-LABEL subpopulation (N=1159) of real-world patients (descriptive)

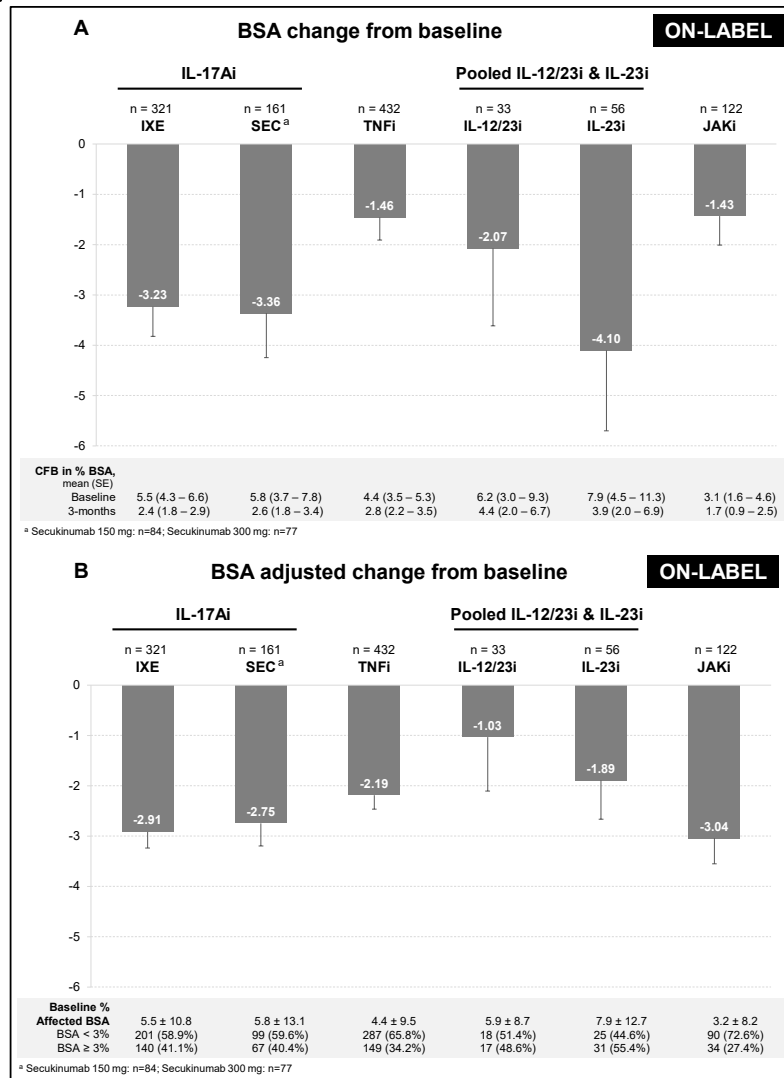


All data presented as mean (95% CI). **(A)** Unadjusted CFB in SEC 150 (N=84; mean [95% CI]= -10.22% [-12.92% – -7.52%]) and SEC 300 (N=77; -9.21% [-12.61% – -5.80%]) pooled together for data visualization purposes. **(B)** Adjusted CFB was adjusted for between-group comparison through the use of MMRM to account for baseline differences in mean cDAPSA. Adjusted CFB in SEC 150 (N=84; mean [95% CI]= -11.04% [-13.68% – -8.40%]) and SEC 300 (N=77; -7.90% [-10.68% – -5.12%]) pooled together for data visualization purposes.

cDAPSA, clinical Disease Activity in Psoriatic Arthritis; CFB, change from baseline; CI, confidence interval; IL, interleukin; IXE, ixekizumab; JAKi, Janus kinase inhibitor; MMRM, mixed model for repeated measures; n/N, number of real-world patients; PsA, psoriatic arthritis; SEC, secukinumab.

SUPPLEMENTARY APPENDIX, Kristensen *et al.*

Supplemental Figure S5: Unadjusted (A) and adjusted (B) change from baseline in mean affected body surface area (BSA) of the on-label population (N=1159) of real-world patients (descriptive)



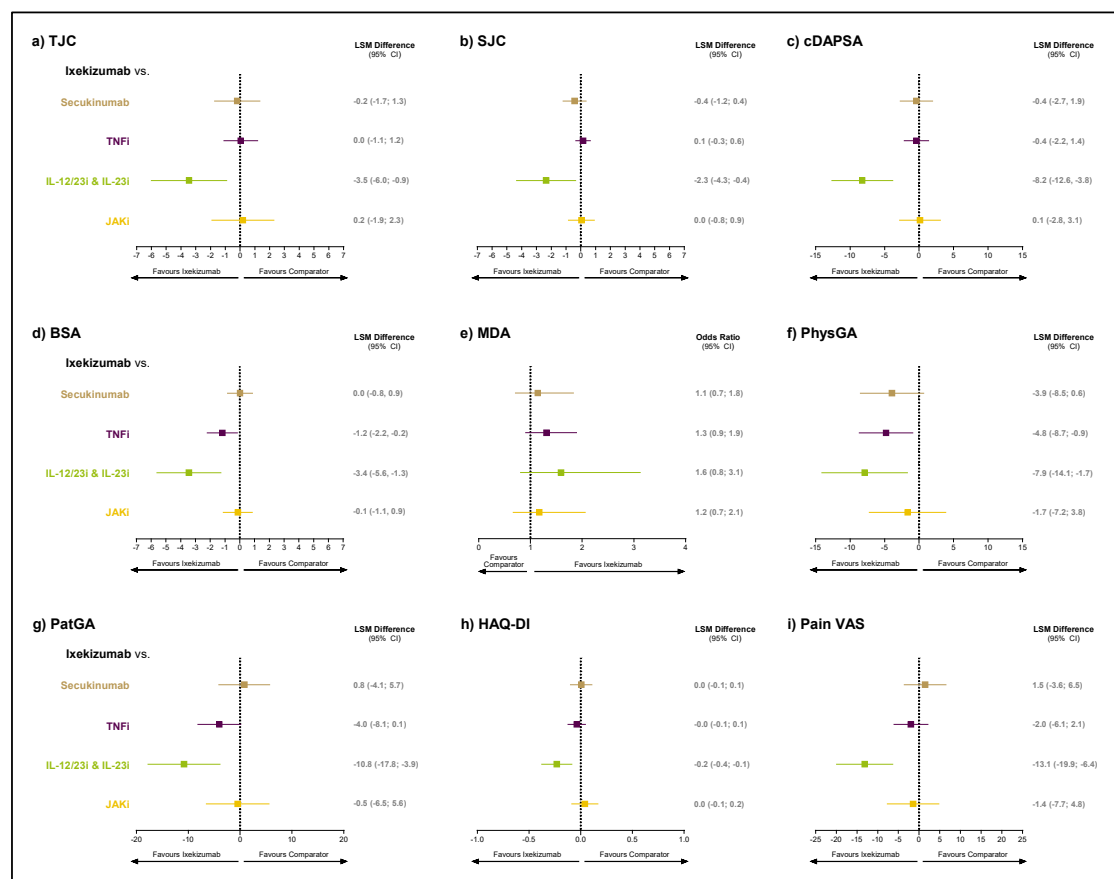
All data presented as mean (95% CI). **(A)** Unadjusted CFB in SEC 150 (N=84; mean [95% CI]= -1.88% [-3.64% - -0.11%]) and SEC 300 (N=77; -5.07% [-8.16% - -1.98%]) pooled together for data visualization purposes. **(B)** Adjusted CFB was adjusted for between-group comparison through the use of MMRM to account for baseline differences in mean BSA. Adjusted CFB in SEC 150 (N=84; mean [95% CI]= -2.81% [-4.01% - -1.60%]) and SEC 300 (N=77; -2.68% [-3.96% - -1.40%]) pooled together for data visualization purposes.

BSA, body surface area; CFB, change from baseline; CI, confidence interval; IL, interleukin; IXE, ixekizumab; JAKi, Janus kinase inhibitor; MMRM, mixed model for repeated measures; n/N, number of real-world patients; PsA, psoriatic arthritis; SEC, secukinumab.

SUPPLEMENTARY APPENDIX, Kristensen *et al.*

Supplemental comparative effectiveness results (adjusted)

Supplemental Figure S6: Comparative effectiveness between specific treatment groups of the ON-LABEL population.

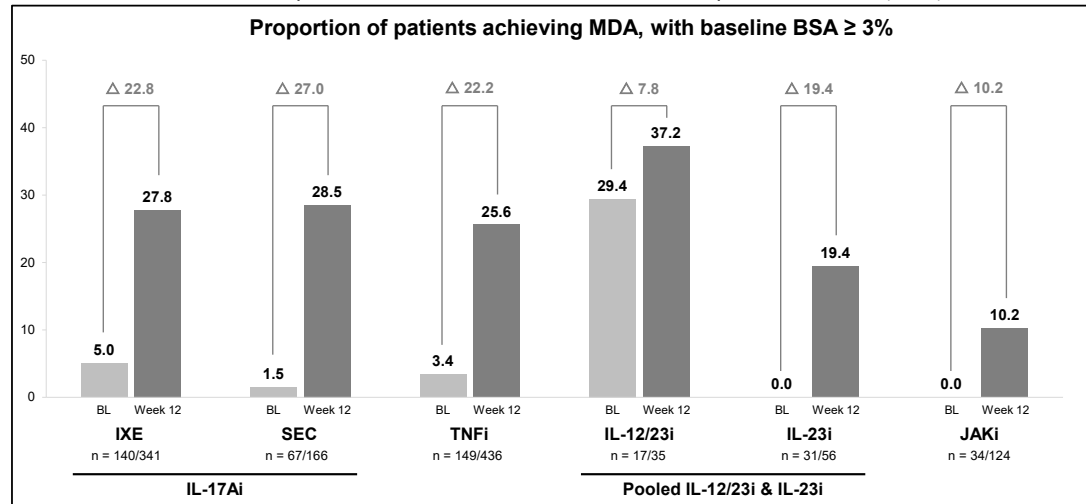


All data presented as least squares mean difference (TJC, SJC, cDAPSA, BSA, PhysGA, PatGA, HAQ-DI, and Pain VAS) or odds ratio (MDA) and 95% CI. Adjusted for between-group comparison through the use of IPTW to account for all baseline differences. Note: Secukinumab 150 mg: n=84; Secukinumab 300 mg: n=77.

BSA, body surface area; cDAPSA, clinical Disease Activity in Psoriatic Arthritis; CI, confidence interval; HAQ-DI, Health Assessment Questionnaire – Disability Index; IPTW, inverse probability of treatment weighting; LSM, least squares mean; MDA, minimal disease activity; PatGA, patient global assessment; PhysGA, physician global assessment; SJC, swollen joint count; TJC, tender joint count; VAS, visual analogue scale.

SUPPLEMENTARY APPENDIX, Kristensen *et al.***Ad hoc analyses**

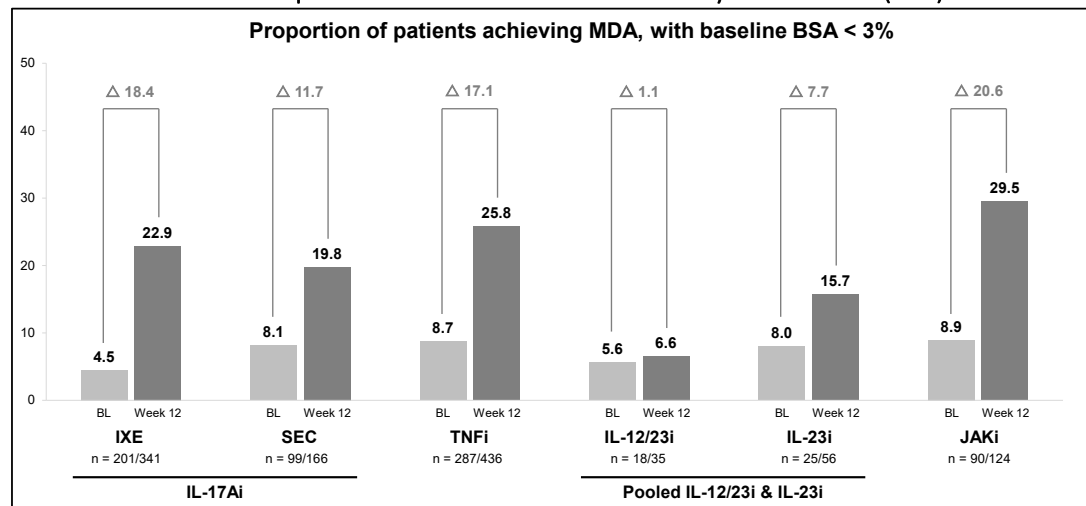
Supplemental Figure S7A. Proportion of patients with Minimal Disease Activity (MDA) among those within the full sample who had a baseline affected body surface area (BSA) $\geq 3\%$



All data presented as % response. SEC 150 (N=33; Baseline= 0% response, Month 3=32.8%) and SEC 300 (N=34; 2.9%, 24.4%) pooled together for data visualization purposes.

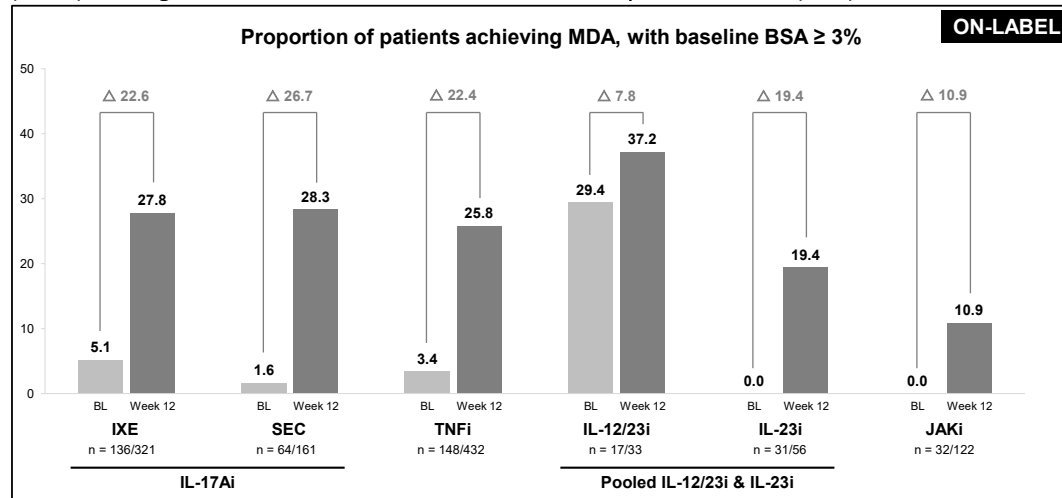
BSA, body surface area; CI, confidence interval; IL, interleukin; IXE, ixekizumab; JAKi, Janus kinase inhibitor; n/N, number of real-world patients; PsA, psoriatic arthritis; SEC, secukinumab.

Supplemental Figure S7B. Proportion of patients with Minimal Disease Activity (MDA) among those within the full sample who had a baseline affected body surface area (BSA) $< 3\%$



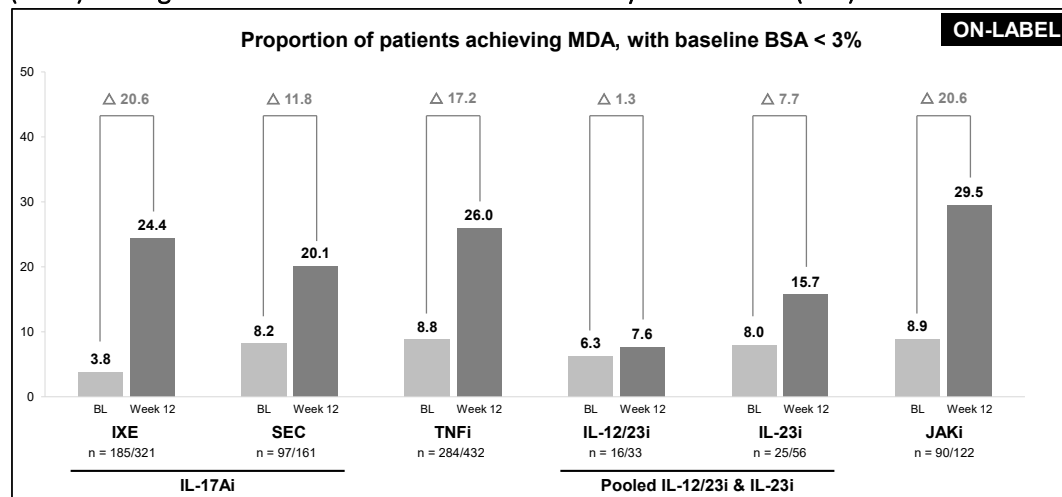
All data presented as % response. SEC 150 (N=54; Baseline= 9.3% response, Month 3=24.9%) and SEC 300 (N=45; 6.7%, 12.9%) pooled together for data visualization purposes.

BSA, body surface area; CI, confidence interval; IL, interleukin; IXE, ixekizumab; JAKi, Janus kinase inhibitor; n/N, number of real-world patients; PsA, psoriatic arthritis; SEC, secukinumab.

SUPPLEMENTARY APPENDIX, Kristensen *et al.*Supplemental Figure S8A. Proportion of ON-LABEL patients with Minimal Disease Activity (MDA) among those who had a baseline affected body surface area (BSA) $\geq 3\%$ 

All data presented as % response. SEC 150 (N=32; Baseline= 0% response, Month 3= 30.7%) and SEC 300 (N=32; 3.1%, 25.9%) pooled together for data visualization purposes.

BSA, body surface area; CI, confidence interval; IL, interleukin; IXE, ixekizumab; JAKi, Janus kinase inhibitor; MDA, minimal disease activity; n/N, number of real-world patients; PsA, psoriatic arthritis; SEC, secukinumab.

Supplemental Figure S8B. Proportion of ON-LABEL patients with Minimal Disease Activity (MDA) among those who had a baseline affected body surface area (BSA) $< 3\%$ 

All data presented as % response. SEC 150 (N=52; Baseline= 9.6% response, Month 3= 25.7%) and SEC 300 (N=45; 6.7%, 12.9%) pooled together for data visualization purposes.

BSA, body surface area; CI, confidence interval; IL, interleukin; IXE, ixekizumab; JAKi, Janus kinase inhibitor; MDA, minimal disease activity; n/N, number of real-world patients; PsA, psoriatic arthritis; SEC, secukinumab.

SUPPLEMENTARY APPENDIX, Kristensen *et al.*

Complete list of study investigators

Country	Investigator First Name	Investigator Last Name	Institution
Canada	Hughes	Allard-Chamard	Diex Recherche Sherbrooke
	Sabeen	Anwar	Dr. Sabeen Anwar Medicine Professional Corporation
	Regan	Arendse	Community Rheumatology Care
	Sam	Aseer	St. Clares Mercy Hospital
	Louis	Bessette	G.R.M.O. (Groupe de recherche en maladies osseuses) Inc
	Pauline	Boulos	Dr. Chrisostomos Kouroukis & Dr. Pauline Boulos Medicine Professional Corporation
	Vinod	Chandran	Toronto Western Hospital
	Denis	Choquette	The Institute of Rheumatology of Montreal
	Andrew	Chow	Dr. Andrew Chow
	Elena	Ciubotariu	La Clinique de Rhumatologie de Montreal
	Brandusa	Florica	Brandusa Florica Medicine Prof. Corp.
	Isabelle	Fortin	Centre de Rhumatologie de l'est du Quebec
	Derek	Haaland	The Waterside Clinic
	Arthur	Lau	Adachi Medicine Professional Corporation
	Juris	Lazovskis	Riverside Professional Center
	Tim	McCarthy	Manitoba Clinic
	Frederic	Morin	Centre De Recherche Musculo-Squelettique
	Manisha	Mulgund	West Mountain Medical Centre
	Vikas	Pandith	Manna Research (Burlinton South)
	Tripti	Papneja	William Osler Health Centre-Brampton Civic Hospital
Jodie	Reis	Polmed Research Inc.	
Nicolas	Richard	Maisonneuve-Rosemont HMR	
Thanu	Ruban	Markham Stouffville Hospital	
France	Andre	BASCH	INFIRMERIE PROTESTANTE DE LYON
	Giles	Bolla	Centre Hospitalier de CANNES SIMONE VEIL
	Pascal	Claudepierre	Hospital Henri Mondor
	Cyrille	Confavreux	Hospital Lyon Sud & Hospital Edouard Herriot (Hospice Civils de Lyon)
	Arnaud	Constantin	Hospital Pierre Paul Riquet
	Emmanuelle	Dernis	CH Le Mans
	Renaud	Felten	CHU Strasbourg
	Emilie	Fockens	Hospital Sainte Marguerite
	Elisabeth	Gervais	Rheumatology Unit, CHU, Poitiers, France

SUPPLEMENTARY APPENDIX, Kristensen *et al.*

	Vincent	Goeb	Centre Hospitalier Universitaire (CHU) Amiens-Picardie - Site Nord (Hospital Nord)
	Laure	Gossec	CHU Pitie Salpetriere
	Philippe	Goupille	CHU de Tours
	Gilles	Hayem	Paris Saint-Joseph Hospital
	Guillaume	Laustriat	CHU Lariboisiere
	Benoit	LeGoff	CHU Hotel Dieu
	Charles	Leske	Centre Hospitalier CH de Cholet
	Eric	Lespessailles	Hospital La Source Orleans
	Frederic	Lioté	CHU Poitiers
	Hubert	Marotte	Centre Hospitalier Universitaire CHU de Saint-Etienne - Hospital Nord
	Jacques	Morel	CHU and University of Montpellier - Hospital Lapeyronie
	Aleth	Perdriger	CHU de Rennes - Hospital Sud
	Sid Ahmed	Rouidi	CH Dreux
	Christian	Roux	CHU Nice
	Jean-Hugues	Salmon	Centre Hospitalier Universitaire (CHU) de Reims - Hospital Maison Blanche
	ALAIN	SARAUX	CHU La Cavale Blanche
	Thierry	SCHAEVERBEKE	CHU Pellegrin
	Martin	Soubrier	Centre Hospitalier Universitaire de Clermont-Ferrand
	Pascale	Vergne Salle	CHU Dupuytren
Germany	Rieke H.	Alten	Schlossparkklinik - Akad. Lehrkrankenhaus Charite
	Christine	Baumann	Rheumatologische Schwerpunktpraxis Plauen Dr. Baumann
	Gerd-Ruediger	Burmester	Charite Universitaetsmedizin Berlin
	Christina	Eisterhues	Rheumatologische Praxis
	Michael	Fiene	Krankenhaus Demmin
	Hauke	Heintz	Hamburger Rheumaforschungszentrum I
	Christian	Herzberg	Rheumapraxis am Treptower Park
	Ann-Doerthe	Holst	Praxis fur Allgemeinmedizin_Naturheilverfahren
	Peter	Kaestner	MVZ Ambulantes Rheumazentrum Erfurt
	Herbert	Kellner	Praxis Prof. Kellner
	Thilo	Klopsch	Praxis für Rheumatologie, Dr. Thilo Klopsch
	Christian	Kneitz	
	Thomas	Kupka	Rheumazentrum Kupka
	Anke	Liebhaber	Dr. Med. Anke Liebhaber
	Thomas	Marycz	Praxis fuer Rheumatologie
Michael	Mueller	Practice	
Ulrich	Prothmann	Knappschaftsklinikum Saar, Krankenhaus Putlingen	

SUPPLEMENTARY APPENDIX, Kristensen *et al.*

	Ulrich	Prothmann	Rheumatologische Praxis Dr Med Ulrich Prothmann
	Elke	Riechers	Medizinische Hochschule Hannover
	Annekatriin	Rossbach	Rheumatologische Facharztpraxis
	Hagen	Schmidt	Rheumapraxis Schmidt
	Michael	Schnorfeil	Rheumapraxis am Mexikoplatz
	Florian	Schuch	Praxisgemeinschaft Rheumatologie-Nephrologie
	Andreas	Schwarting	Universitaetsmedizin Mainz I. Medizinische Klinik und Poliklinik
	Ilka	Schwarze	Praxis f. InternistischRheumatologie Dr. Ilka Schwarze
	Holger	Schwenke	Rheumatologisches MVZ Dresden GmbH
	Maren	Sieburg	Rheumatologische Facharztpraxis
	Patrizia	Sternad	Klinische Forschung im medizinischen Versorgungsalltag GbR
	Carsten	Stille	Rheumapraxis Hannover-List
	Anna-Elisabeth	Thiele	Dr. Med. Anna-Elisabeth Thiele
	Hans-Peter	Tony	Centre Hospitalier de Bigorre
	Leonore	Unger	Krankenhaus Dresden-Friedrichstadt
	Dirk	Wernicke	Practice
	Silke	Zinke	Praxis fuer Innere Medizin und Rheumatologie
Italy	Fabiola	Atzeni	Azienda Osp. Univ. Policlinico G. Martino
	Antonio	Caporali	Istituto Ortopedico G. Pini
	Alberto	Cauli	Azienda Ospedaliero-Universitaria
	Roberto	Chimenti	Università di Roma Tor Vergata
	Francesco	Ciccia	Università degli Studi della Campania Luigi Vanvitelli Napoli
	Francesco	Cipollone	Policlinico Clinicizzato SS Annunziata
	Fabrizio	Conti	Policlinico Umberto I
	Lorenzo	Dagna	IRCCS Ospedale San Raffaele
	Salvatore	D'angelo	Azienda Ospedaliera Regionale S. Carlo
	Salvatore	De Vita	Ospedale S. Maria della Misericordia
	Fabrizio	Denaro	Ospedale Misericordia e Dolce di Prato
	Rosario	Foti	Azienda Ospedaliero - Universitaria
	Franco	Franceschini	ASST Spedali Civili di Brescia
	Bruno	Frediani	Azienda Ospedaliera Universitaria Senese- uoc reumatologia
	Roberto	Gerli	Reumatologia, Policlinico S.Maria della Misericordia
	Marcello	Govoni	Ospedale S.Anna di Ferrara
	Giuliana	Guggino	Policlinico Universitario Paolo Giaccone
Serena	Guiducci	Azienda Ospedaliera, Universitaria di Careggi	

SUPPLEMENTARY APPENDIX, Kristensen *et al.*

	Massimilano	Limonta	ASST Papa Giovanni XXIII
	Claudia	Lomater	Ospedale Umberto I di Torino
	Ennio	Lubrano	Universita Degli Studi del Molise (University of Molise) (UNIMOL) - Facolta di Medicina e Chirurgia
	Marta	Mosca	Azienda Ospedaliero-Universitaria Pisana
	Giuseppe	Provenzano	Azienda Ospedaliera Ospedali Riuniti Villa Sofia - Cervello Presidio Ospedaliero CTO
	Piercarlo	Sarzi-Puttini	Polo Universita degli Studi di Milano - Ospedale Luigi Sacco
	Raffaele	Scarpa	Policlinico Univ Federico II
	Carlo	Selmi	Humanitas Research Hospital
	Angelo	Semeraro	Presidio Ospedaliero Valle d'Itria
	Ombretta	Viapiana	UOC Reumatologia policlinico GB Rossi
Spain	Maria	Alcalde Villar	Hospital Universitario Severo Ochoa
	Angel	Aragon Díez	Hospital Universitario de Getafe
	Emma	Beltrán Catalan	Hospital del Mar
	Joaquin	Belzunegui	Hospital Universitario Donostia
	Jaime	Calvo Alén	Hospital Universitario Araba
	Javier	Campos	Hospital General Universitario de Valencia
	Eugenio	Chamizo Carmona	Complejo Hospital de MERIDA
	Francisco Javier	de Toro Santos	CHUAC - Complejo Hospitalario Universitario A Corua
	Consuelo	Diaz-Miguel Perez	Hospital Universitario Ramon y Cajal
	Alejandro	Escudero Contreras	Hospital Universitario Reina Sofia
	Cristina	Fernández Carballido	Hospital Universitario San Juan de Alicante
	Benjamin	Fernandez Gutierrez	Hospital Clinico Universitario de San Carlos
	Antonio	Fernandez-Nebro	Hospital Regional Universitario Carlos Haya
	Adela	Gallego	Complejo Hospitalario Universitario de Badajoz
	Antonio	Garcia Sanchez	Hospital Universitario Virgen de las Nieves
	Maria Luz	Garcia Vivar	Hospital de Basurto
	Jose Angel	Hernandez-Beriain	Complejo Hospitalario Universitario Insular - Materno Infantil
	Beatriz	Joven Ibanez	Hospital 12 de Octubre
	Sara	Marsal Barril	Hospital Universitario Vall d'Hebron
	Àngels	Martínez Ferrer	Hospital Universitario Doctor Peset
Maria Jose	Moreno Martínez	Hospital General Universitario Rafael Méndez	
Manuel Jose	Moreno Ramos	Hospital Universitario Virgen de la Arrixaca	
Santiago	Munoz Fernandez	Hospital Universitario Infanta Sofia	

SUPPLEMENTARY APPENDIX, Kristensen *et al.*

	Alejandro	Muñoz Jiménez	Hospital Universitario Virgen del Rocio
	Jordi	Pons Dolset	Hospital Royo Vilanova
	Rubén	Queiro Silva	Hospital Universitario Central De Asturias
	Enrique	Raya	Hospital Clínico Universitario San Cecilio
	Susana	Romero Yuste	Complejo Hospitalario Universitario de Pontevedra
	Jose Carlos	Rosas Gomez de Salazar	Hospital de la Marina Baja
	Georgina	Salvador	Mutua Terrassa
	Juan Miguel	Sanchez Burson	Hospital Infanta Luisa
	Francisca	Sivera Mascaró	Hospital General Universitario de Elda
	Pilar	Trenor Larraz	Hospital Clínico Universitario de Valencia
United Kingdom	Khalid	Ahmed	Princess Alexandra Hospital
	Laith	Al-Sweedan	George Eliot Hospital
	Magnus Nichol	Barkham	New Cross Hospital
	David	Coady	Sunderland Royal Hospital
	Laura C.	Coates	Oxford University Hospitals NHS Foundation Trust
	Karl	Gaffney	Norfolk & Norwich University Hospital
	Nicola	Gullick	University Hospitals Coventry and Warwickshire NHS Trust
	John	Harvie	Raigmore Hospital
	Dobrina N.	Hull	Kingston Hospital NHS Foundation Trust
	Ramasharam	Ismail	Stepping Hill Hospital
	Bruce W.	Kirkham	Guys Hospital
	Ellie	Korendowych	The Royal National Hospital for Rheumatic Diseases (RNHRD)
	Barbara	Kuske	Western General Hospital (NHS Lothian)
	Catherine	Lawson	Harrogate District Hospital
	Abbas	Laxminarayan	Queens Hospital Burton
	Kirsten	Mackay	Torbay Hospital
	Helena	Marzo-Ortega	The Leeds Teaching Hospitals NHS Trust
	Stephen	McDonald	Altnagelvin Hospital
	Hoda	Mirjafari-Temple	Countess of Chester NHS Foundation Trust
	Robert	Moots	
Muhammed	Nisar	Luton and Dunstable Hospital	
Sheila	O'Reilly	Royal Derby Hospital	
Jonathan C.	Packham	Haywood Hospital	
Yusuf	Patel	Hull Royal Infirmary	
Hada	Sadik	Warrington Hospital	
Thomas	Sheeran	Cannock Chase Hospital	

SUPPLEMENTARY APPENDIX, Kristensen *et al.*

	Hasan	Tahir	Royal Free London NHS foundation Trust
	James	Taylor	Northampton General Hospital NGH NHS Trust
	Eleri	Thomas	St Woolos Hospital
	Louise	Warburton	Shropshire Community NHS Trust
	Chee-Seng	Yee	Doncaster and Bassetlaw Teaching Hospitals NHS Foundation Trust