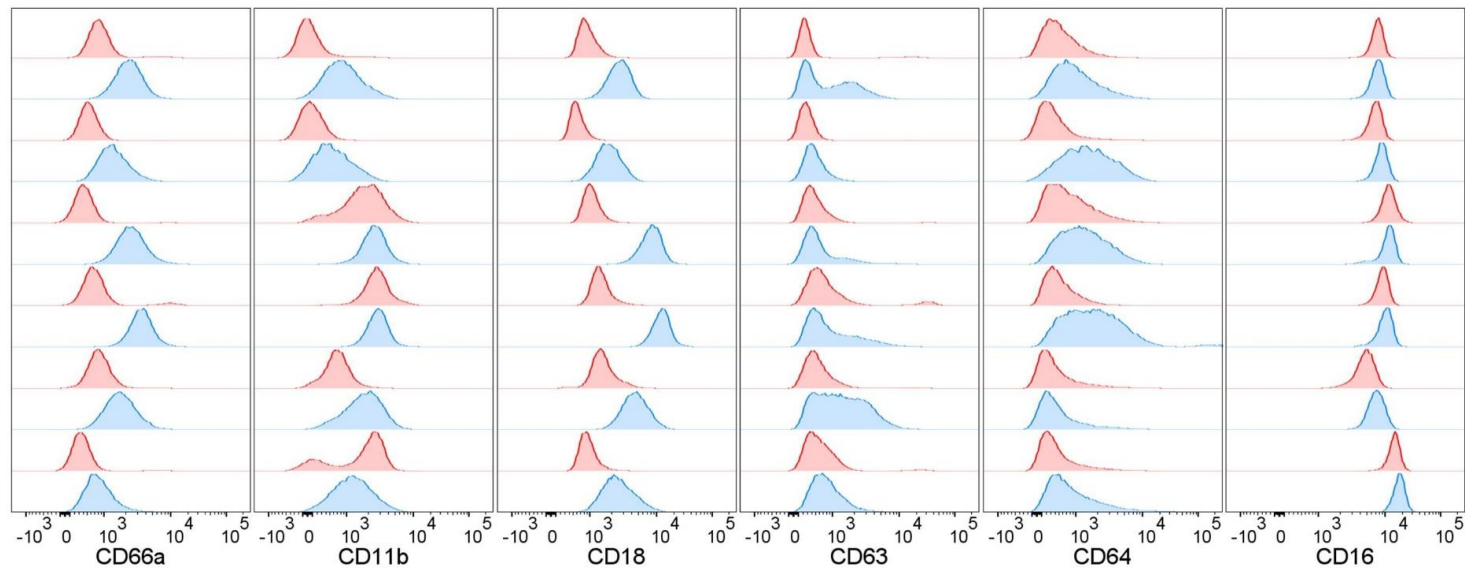


**Supplemental Figure 1:** Gating strategy for synovial fluid leukocytes. Debris was excluded and single cells were gated based on SSC-H x SSC-W. Synovial leukocytes were gated as follows: PMNs were CD16<sup>+</sup>/SSC-A<sup>hi</sup> (blue); macrophages were CD16<sup>-ve</sup>/CD64<sup>+</sup> (red); remaining cells were CD16<sup>-ve</sup>/CD64<sup>-ve</sup> (green). The FSC-A/SSC-A profile of the gated populations are shown.



**Supplemental Figure 2:** PsA patient blood and SF histograms. Histograms of six cell surface markers are shown for 6 patients where matching blood (red) and SF (blue) samples were acquired.