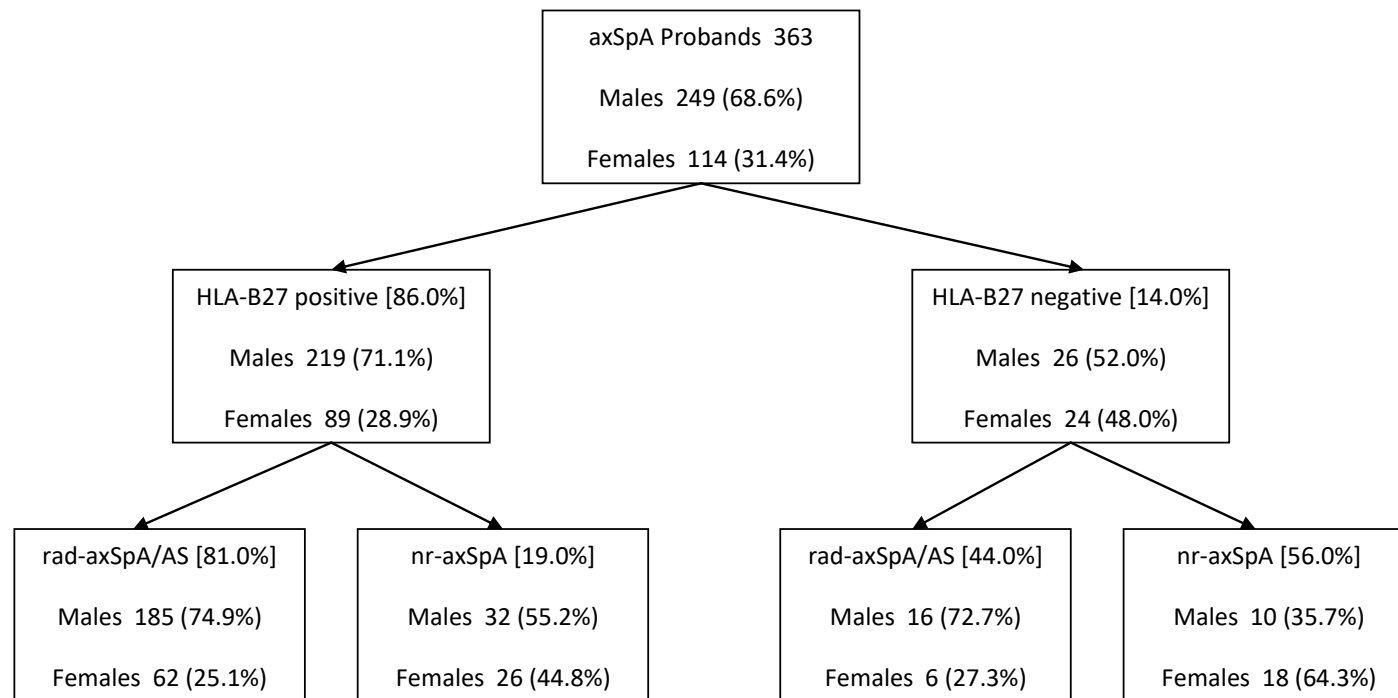
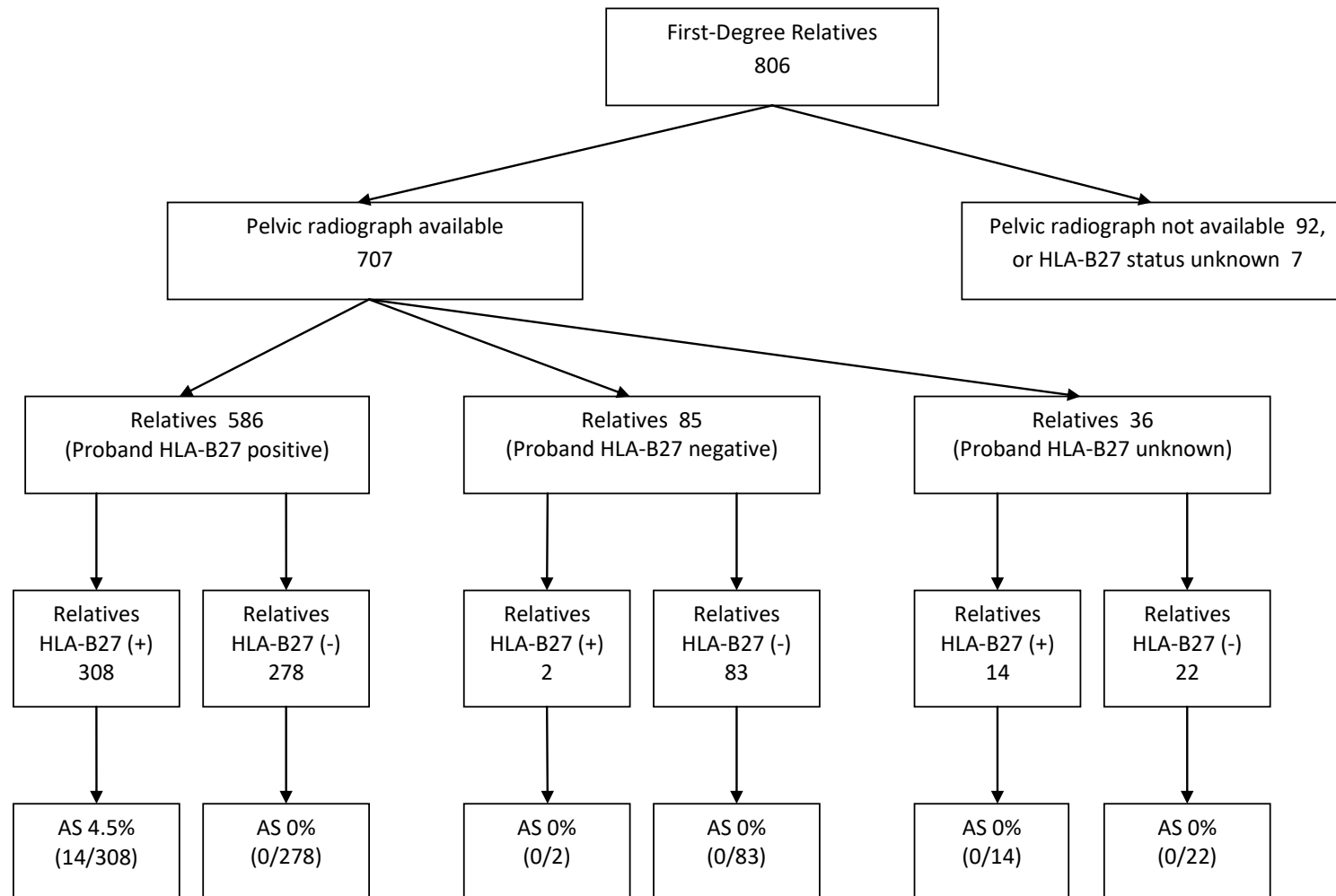
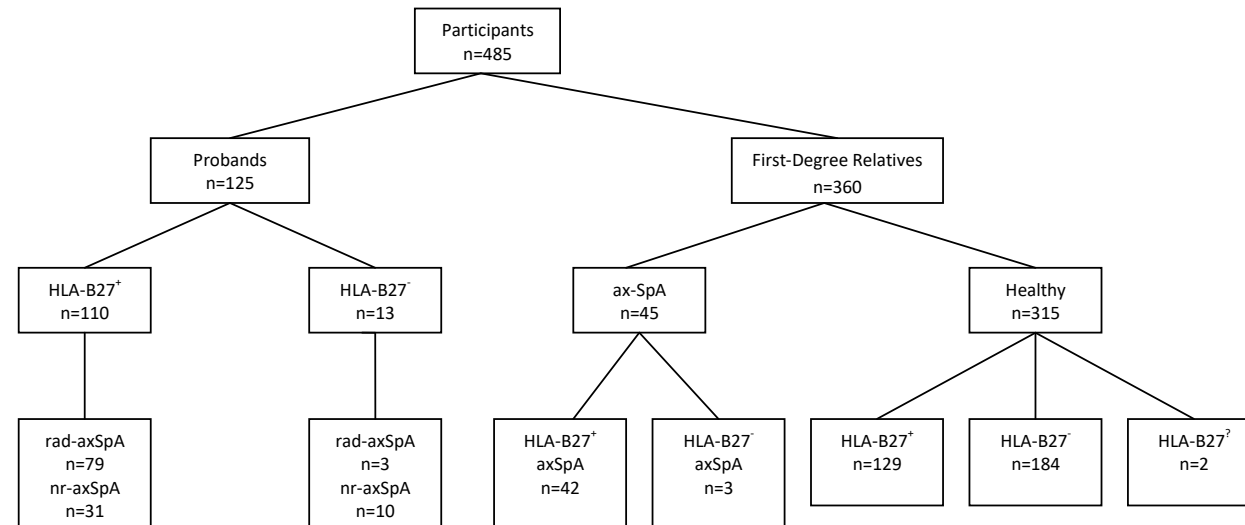


Supplementary flowchart 1. Baseline study (1985). Male and female probands with axSpA by HLA-B27 and radiographic status. Rad-axSpA indicates AS by modified New York criteria; nr-axSpA means non-radiographic axial SpA. HLA-B27 status unknown for 5 probands, radiographic status for 3 probands



Supplementary flowchart 2. Baseline study (1985). First-degree relatives with or without AS (modified New York criteria) related to their individual HLA-B27 status and HLA-B27 status of the family proband





Supplementary flowchart 3. Follow-up study (1985-86). Probands with axial spondyloarthritis (axSpA) are classified by HLA-B27 and radiographic status (modified New York criteria), first-degree relatives are classified as axSpA or healthy and by HLA-B27 status. (HLA data are missing for 2 probands).