

Supplementary Table S1. Comorbidities identified in the Danish National Patient Registry		
Disease	ICD-10 codes*	ICD-8 codes*
Malignancy	All except benign tumors (Any tumor: C00-C43, C45-C75, Metastatic solid tumor: C76-80, Lymphoma: C81-C85, C88, C90, C96, Leukemia: C91-C95)	All except benign tumors (Any tumor: 140-194, Metastatic solid tumor: 195-199, Lymphoma: 200-203; 275.59, Leukemia: 204-207)
Infection	A00-B99, D73.3, E06.0, E32.1, G00-G02, G04.2, G05-G07, H00.0, H44.0, H60.0-H60.3, H66-H67, H70, I30.1, I40.0, J00-J22, J32, J34.0, J36, J38.3, J39.0-J39.1, J44.0, J85, J86, K04.4, K04.6, K04.7, K10.2, K11.3, K12.2, K14.0, K57.0, K57.2, K57.4, K57.8, K61, K63.0, K65.0, K65.1, K65.2, K65.9, L00-L08, L30.3, M00-M01, M46.2-M46.5, M60.0, M65.0, M71.0, M71.1, M72.6, M86, N10, N11, N12, N13.6, N15.1, N15.9, N30.0 N30.8, N34.0, N39.0, N41.2, N43.1, N45.2, N45.3, N45.4, N48.2, N61, N70, N73, N75.1, O23, O26.4, O41.1, O75.3, O85, O86, O88.3, O91, O98;	-
Knee or hip prosthesis	S: NGB, NFB	-
Chronic pulmonary disease	J40-J47; J60-J67; J68.4; J70.1; J70.3; J84.1; J92.0; J96.1; J98.2; J98.3	-
Diabetes	E10-E14, O24	-
Myocardial infarction	I20.0, I21, I22	-
Chronic kidney disease	I12, I13; N00-N05; N07; N11; N14; N18-N19; Q61	-
*ICD: International Statistical Classification of Diseases and Related Health Problems; according to list by the World Health Organization (WHO). Both in- and outpatient contacts were included from the establishment of the registry in 1976. Time window applied was 0-10 years prior to baseline for all disease, and ever for malignancy. Datacut was by August 10, 2018		

Supplementary Table S2. Available baseline data for the study population, stratified by previous originator treatment history and indication

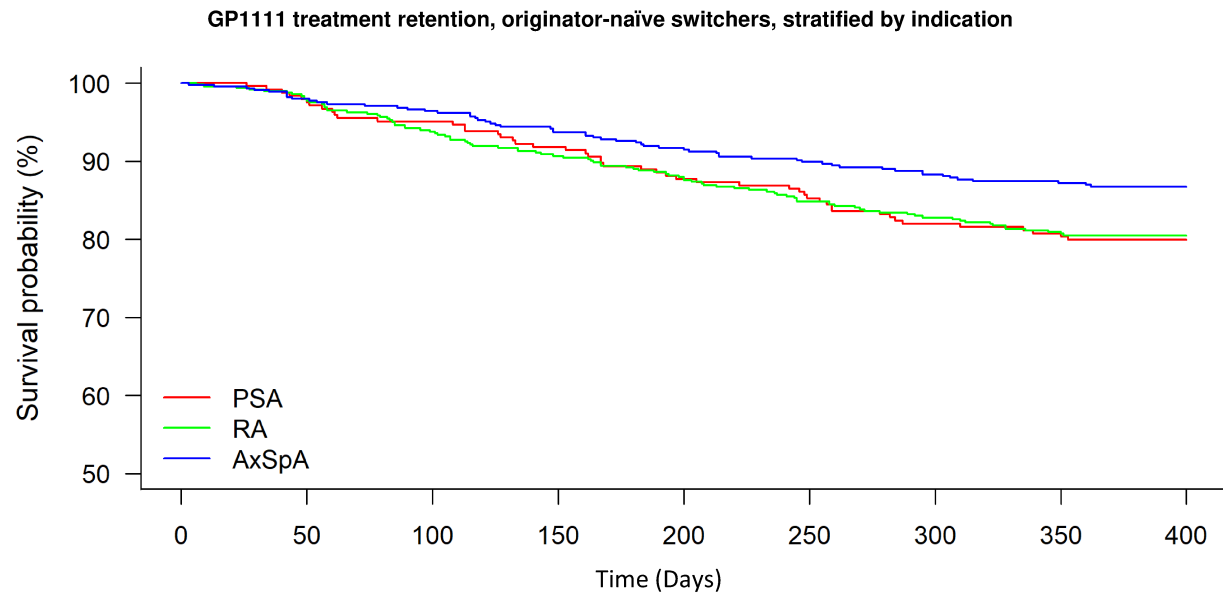
	Originator-naïve switchers N=1,171			Originator-experienced switchers N=434		
	RA*	PsA	AxSpA	RA*	PsA	AxSpA
Number of patients, n	482	244	445	203	70	161
Gender, n (%)	482 (100)	244 (100)	445 (100)	203 (100)	70 (100)	161 (100)
Age, n (%)	482 (100)	244 (100)	445 (100)	203 (100)	70 (100)	161 (100)
Disease duration, n (%)	469 (97)	223 (91)	425 (96)	194 (96)	68 (97)	159 (99)
BMI, n (%)	226 (47)	103 (42)	175 (39)	171 (84)	58 (83)	140 (87)
Smoking status, n (%)	482 (100)	243 (99)	441 (99)	201 (99)	70 (100)	160 (99)
Year of originator treatment start, n (%)	-	-	-	203 (100)	70 (100)	161 (100)
Prior originator treatment duration, n (%)	-	-	-	203 (100)	70 (100)	161 (100)
Prior CT-P13 treatment duration, n (%)	482 (100)	244 (100)	445 (100)	203 (100)	70 (100)	161 (100)
Concomitant MTX, n (%)	482 (100)	244 (100)	445 (100)	203 (100)	70 (100)	161 (100)
Prior non-infliximab bDMARD treatments, n (%)	482 (100)	244 (100)	445 (100)	203 (100)	70 (100)	161 (100)
Visits during one-year follow-up	473 (98)	240 (98)	440 (99)	195 (96)	67 (96)	157 (98)
Disease activity						
In DAS28/ASDAS remission (yes/no), n (%)	363 (75)	196 (80)	370 (83)	150 (74)	53 (76)	135 (84)
In CDAI/ASDAS remission (yes/no), n (%)	389 (81)	186 (76)	370 (83)	157 (77)	51 (73)	136 (84)
CRP, n (%)	422 (88)	213 (87)	393 (88)	169 (83)	59 (84)	144 (89)
DAS28, n (%)	397 (82)	196 (80)	-	161 (79)	56 (80)	-
CDAI, n (%)	389 (81)	186 (76)	-	157 (77)	51 (73)	-
BASDAI, n (%)	-	-	382 (86)	-	-	142 (88)
BASFI, n (%)	-	-	373 (84)	-	-	138 (86)
ASDAS, n (%)	-	-	370 (83)	-	-	135 (84)
Swollen joint count, n (%)	423 (88)	204 (84)	230 (52)	172 (85)	58 (83)	85 (53)
Tender joint count, n (%)	424 (88)	206 (84)	234 (53)	171 (85)	58 (83)	85 (53)
Physician global VAS, n (%)	407 (84)	196 (80)	228 (51)	162 (80)	53 (76)	74 (46)
Patient pain VAS, n (%)	423 (88)	216 (89)	395 (89)	175 (86)	61 (87)	144 (89)
Patient fatigue VAS, n (%)	420 (87)	215 (89)	393 (88)	175 (86)	61 (87)	143 (89)
Patient global VAS, n (%)	424 (88)	216 (89)	396 (89)	178 (88)	61 (87)	144 (89)
HAQ, n (%)	417 (87)	217 (89)	376 (85)	173 (85)	60 (86)	141 (88)
PASS, n (%)	405 (84)	210 (86)	380 (85)	169 (83)	60 (86)	138 (86)
Comorbidities***						
Cancer, n (%)	482 (100)	244 (100)	445 (100)	203 (100)	70 (100)	161 (100)
Hospitalized infection, n (%)	482 (100)	244 (100)	445 (100)	203 (100)	70 (100)	161 (100)
Knee/hip prosthesis, n (%)	482 (100)	244 (100)	445 (100)	203 (100)	70 (100)	161 (100)

Pulmonary disease, n (%)	482 (100)	244 (100)	445 (100)	203 (100)	70 (100)	161 (100)
Diabetes, n (%)	482 (100)	244 (100)	445 (100)	203 (100)	70 (100)	161 (100)
Myocardial infarction, n (%)	482 (100)	244 (100)	445 (100)	203 (100)	70 (100)	161 (100)
Chronic kidney disease, n (%)	482 (100)	244 (100)	445 (100)	203 (100)	70 (100)	161 (100)

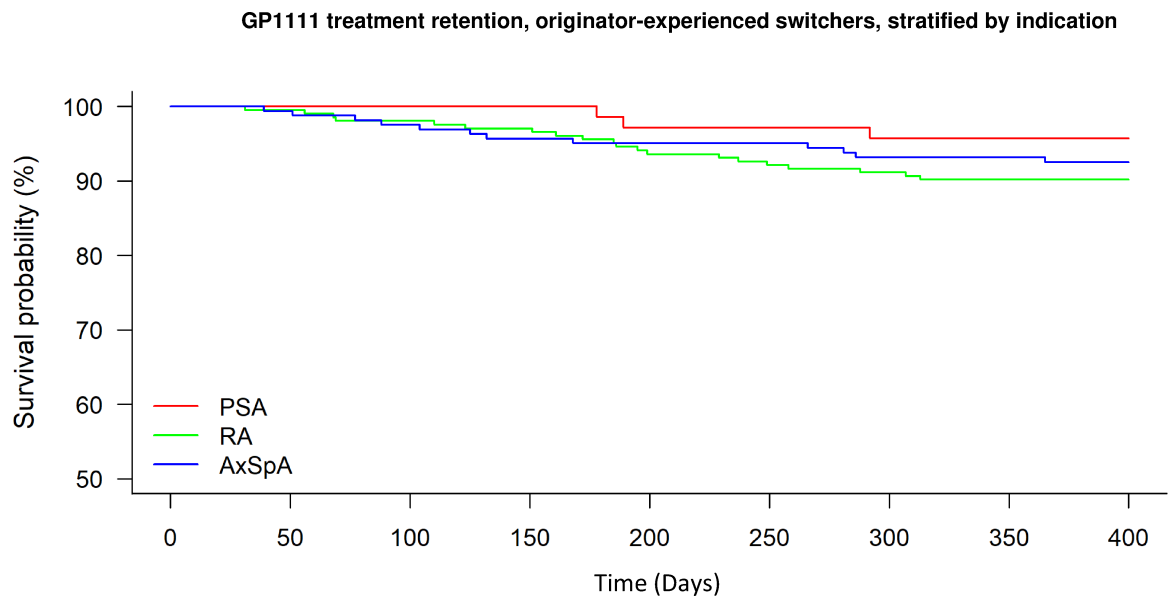
Supplementary Table S3. Baseline characteristics of all switch patients stratified by indication			
Total switch cohort N=1,605			
	RA	PsA	AxSpA
Number of patients, n	685	314	606
Female, n (%)	474 (69)	153 (49)	191 (32)
Age, years	61 (50-70)	52 (41-60)	45 (35-54)
Disease duration, years	11 (5-19)	9 (5-15)	6 (3-14)
0-5 years, n (%)	178 (27)	82 (28)	266 (46)
>5 years, n (%)	485 (73)	209 (72)	318 (54)
BMI, kg/m ²	24.9 (22.2-28.9)	27.3 (23.8-30.4)	25.7 (22.9-28.4)
Current smoking, n (%)	161 (24)	62 (20)	174 (29)
Prior originator treatment duration, years	-	-	-
Prior CT-P13 treatment duration, years	-	-	-
Concomitant MTX, n (%)	517 (75)	182 (58)	85 (14)
Prior non-infliximab bDMARD treatments, n (%)			
0	458 (67)	214 (68)	427 (70)
1	121 (18)	59 (19)	90 (15)
≥2	106 (15)	41 (13)	89 (15)
Visits during one-year follow-up	3 (2-6)	3 (2-6)	3 (2-6)
Disease activity			
In DAS28/ASDAS remission**, n (%)	338 (49)	178 (57)	184 (30)
In CDAI/ASDAS remission***, n (%)	279 (41)	129 (41)	184 (30)
CRP, mg/L	3 (1-5)	2 (1-4)	2 (1-4)
DAS28	2.2 (1.6-2.9)	2.1 (1.7-5.7)	-
CDAI	4.8 (1.9-8.4)	4.7 (2.0-9.1)	-
BASDAI, mm	-	-	26 (12-47)
BASFI	-	-	21 (9-45)
ASDAS	-	-	1.7 (1.0-2.7)
Physician global VAS, mm	5 (2-11)	5 (2-11)	4 (1-9)
Patient pain VAS, mm	26 (10-48)	28 (9-56)	22 (8-47)
Patient fatigue VAS, mm	40 (18-67)	45 (18-73)	40 (16-67)
Patient global VAS, mm	32 (11-56)	34 (14-65)	25 (10-53)
HAQ	0.6 (0.1-1.1)	0.6 (0.1-1.1)	0.4 (0.0-0.8)
PASS yes, n (%)	408 (60)	178 (57)	371 (61)
Comorbidities***			
Cancer, n (%)	15 (22)	11 (4)	10 (2)
Hospitalized infection, n (%)	196 (29)	77 (25)	116 (20)
Knee/hip prosthesis, n (%)	71 (10)	15 (5)	17 (3)
Pulmonary disease, n (%)	44 (6)	17 (5)	15 (2)
Diabetes, n (%)	40 (6)	21 (7)	20 (3)
Myocardial infarction, n (%)	17 (2)	5 (2)	7 (1)
Chronic kidney disease, n (%)	12 (2)	<5	<5

Numbers are median (interquartile ranges) unless otherwise stated. Baseline is in time-window -90 days to +6 days according to switch date. *Also includes patients with Juvenile RA, polyarthritis, reactive arthritis and other arthritis. **DAS28/ASDAS remission defined as DAS28 <2.6 (RA, PsA), ASDAS <1.3 (AxSpA). *** CDAI remission defined as <2.9 (RA, PsA) *** 0-10 years prior to baseline and ever for cancer. ASDAS: Ankylosing Spondylitis Disease Activity Score; BASDAI: Bath Ankylosing Spondylitis (BAS) Disease Activity Index (0-100); BASFI: BAS Functional Index (0-100); CRP: C-reactive protein; CDAI: Clinical Disease Activity Index; DAS-28: Disease activity score (4 variables); HAQ: Health assessment Questionnaire (0-3); MTX: Methotrexate; PASS: Patient Acceptable Symptom State (yes/no); Patient pain (VAS 0-100), fatigue (VAS 0-100), patient global assessment (VAS 0-100), and physician global VAS (visual analog scale [VAS], 0-100). For patient discretion, numbers below 5 are not presented.

Supplementary Figure 1A. Kaplan-Meier plots of crude treatment retention rates among originator-naïve switchers (stratified by indication)



	Day 0	Day 180	Day 365
Rheumatoid Arthritis (RA)			
No. at risk	482	430	388
No. of events	0	52	94
Retention (95% CI)	100.0% (100.0-100.0%)	89.0% (86.2-91.8%)	80.5% (77.0-84.0%)
Psoriasis Arthritis (PsA)			
No. at risk	244	218	195
No. of events	0	26	49
Retention (95% CI)	100.0% (100.0-100.0%)	89.3% (85.5-93.2%)	79.9% (74.9-84.9%)
Axial Spondyloarthritis (AxSpA)			
No. at risk	445	412	386
No. of events	0	33	59
Retention (95% CI)	100.0% (100.0-100.0%)	92.6% (90.1-95.0%)	86.7% (83.7-89.9%)

Supplementary Figure 1B. Kaplan-Meier plots of crude treatment retention rates among originator-experienced switchers (stratified by indication)

	Day 0	Day 180	Day 365
Rheumatoid Arthritis (RA)			
No. at risk	203	194	183
No. of events	0	9	20
Retention (95% CI)	100.0% (100.0-100.0%)	95.6% (92.7-98.4%)	90.1% (86.0-94.2%)
Psoriasis Arthritis (PsA)			
No. at risk	70	69	67
No. of events	0	1	3
Retention (95% CI)	100.0% (100.0-100.0%)	98.6% (95.8-100.0%)	95.7% (91.0-100.0%)
Axial Spondyloarthritis (AxSpA)			
No. at risk	161	153	150
No. of events	0	8	11
Retention (95% CI)	100.0% (100.0-100.0%)	95.0% (91.7-98.4%)	92.5% (88.5-96.6%)