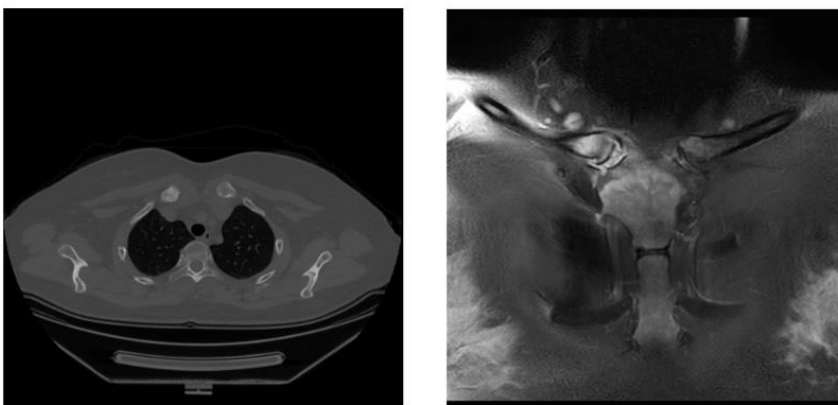


Supplementary Materials

A



B



Supplementary Figure 1. Bone and skin injury images of the patient with SAPHO syndrome. (A) Diagram of the patient's abnormal skin lesions, followed by scalp, popliteal and axillary rashes. **(B)** CT

and MRI images of the sternoclavicular joints. The results showed significant sclerosis and edema in the sternoclavicular joint.



Supplementary Figure 2. Local skin lesions were significantly improved after IL-17 treatment.

The pictures were scalp, popliteal and armpits.