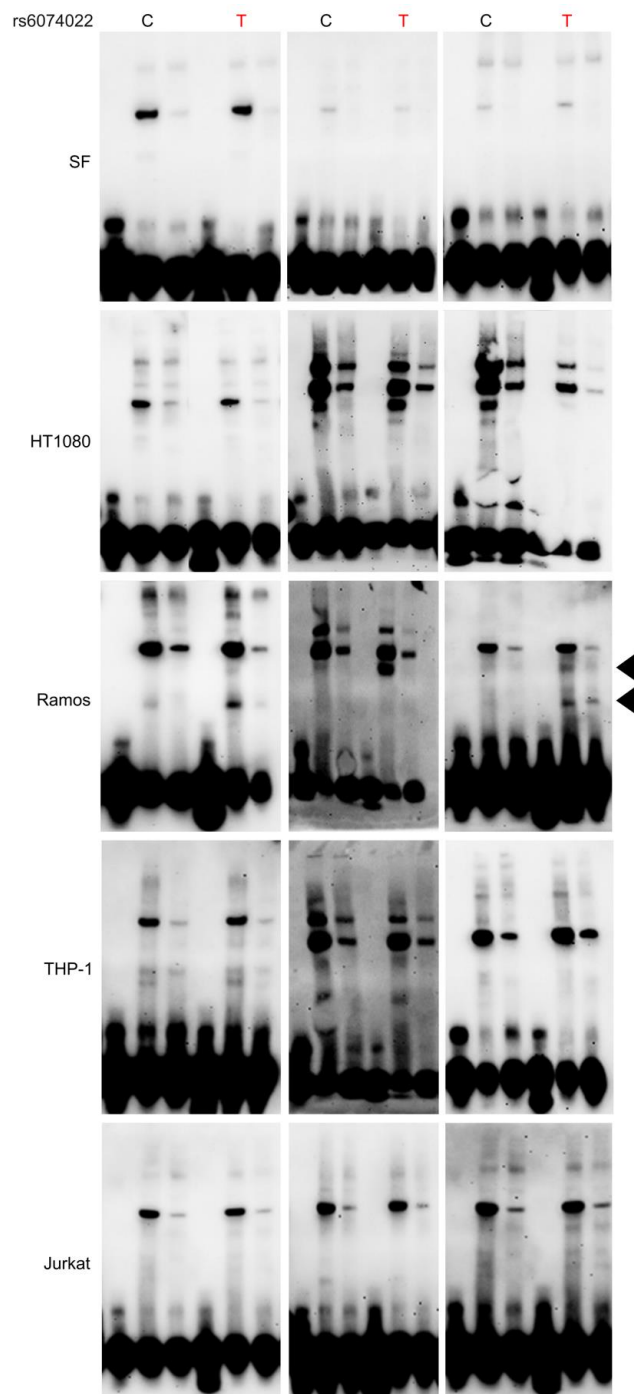
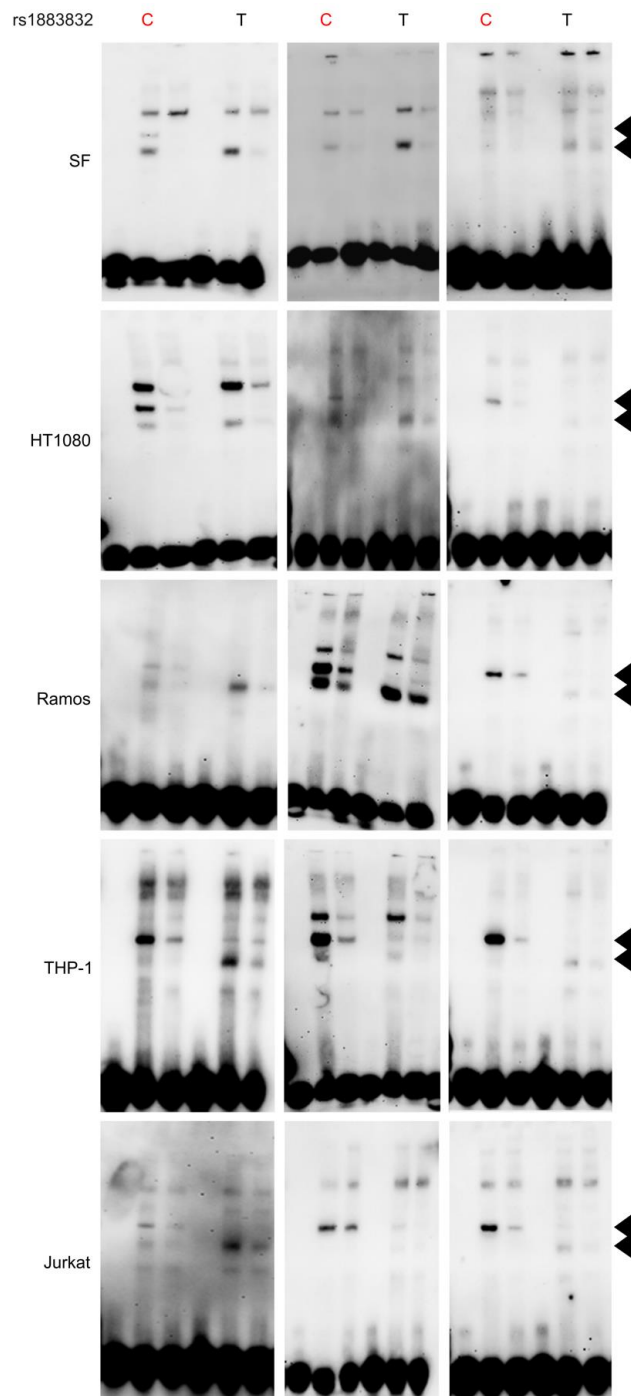


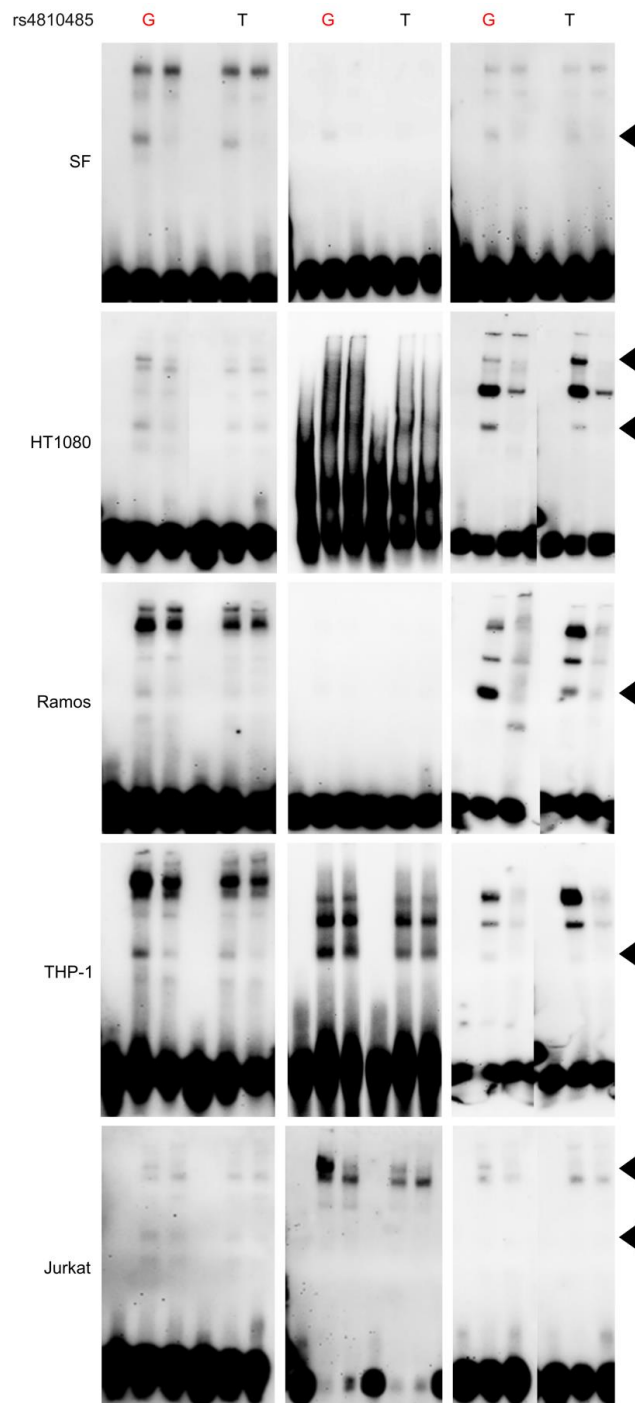
## Supplementary Information 3



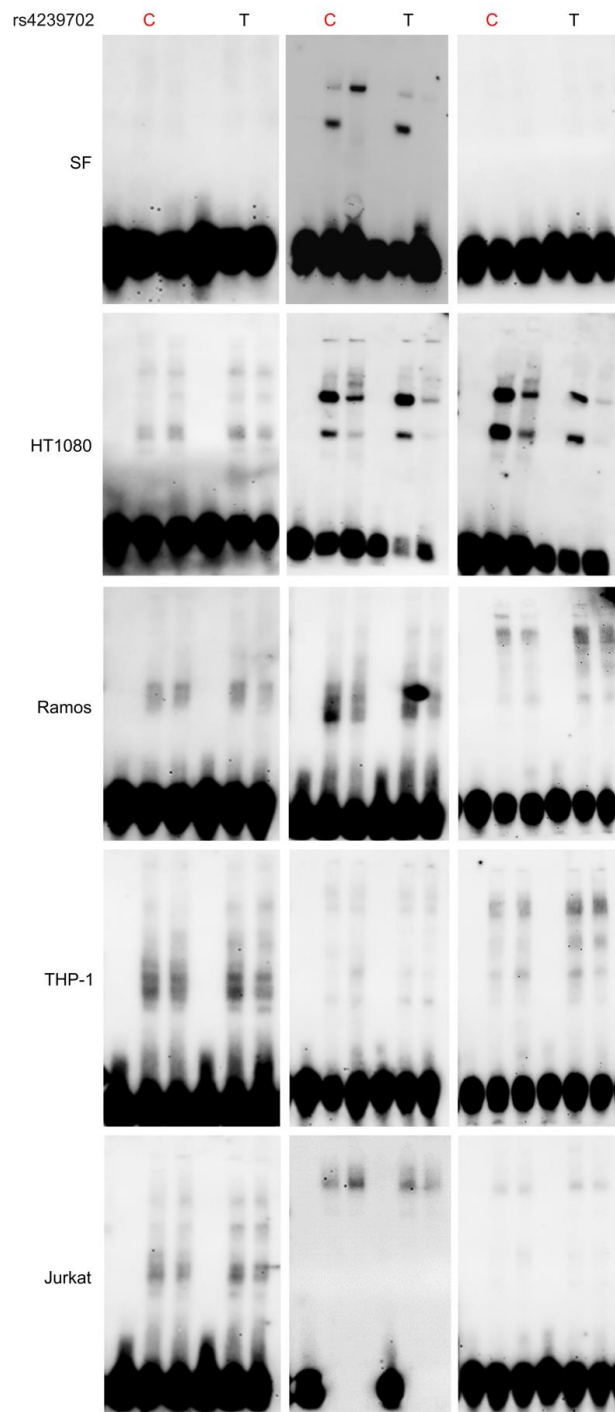
**Figure 1. Allele specific protein binding for rs6074022 in SF and immune cells.** EMSAs were performed with synovial fibroblast, HT1080, Ramos, THP-1 and Jurkat nuclear extracts and a biotinylated probe containing rs6074022. For each allele: lane 1 is probe only, lane 2 is probe with nuclear extract and lane 3 is probe with nuclear extract and excess unlabeled probe. The major/risk allele for each SNP is shown in red. Allele specific binding is marked with arrowheads.



**Figure 2. Allele specific protein binding for rs1883832 in SF and immune cells.** EMSAs were performed with synovial fibroblast, HT1080, Ramos, THP-1 and Jurkat nuclear extracts and a biotinylated probe containing rs1883832. For each allele: lane 1 is probe only, lane 2 is probe with nuclear extract and lane 3 is probe with nuclear extract and excess unlabeled probe. The major/risk allele for each SNP is shown in red. Allele specific binding is marked with arrowheads.



**Figure 3. Allele specific protein binding for rs4810485 in SF and immune cells.** EMSAs were performed with synovial fibroblast, HT1080, Ramos, THP-1 and Jurkat nuclear extracts and a biotinylated probe containing rs4810485. For each allele: lane 1 is probe only, lane 2 is probe with nuclear extract and lane 3 is probe with nuclear extract and excess unlabeled probe. The major/risk allele for each SNP is shown in red. Allele specific binding is marked with arrowheads.



**Figure 4. Allele specific protein binding for rs4239702 in SF and immune cells.** EMSAs were performed with synovial fibroblast, HT1080, Ramos, THP-1 and Jurkat nuclear extracts and a biotinylated probe containing rs4239702. For each allele: lane 1 is probe only, lane 2 is probe with nuclear extract and lane 3 is probe with nuclear extract and excess unlabeled probe. The major/risk allele for each SNP is shown in red.