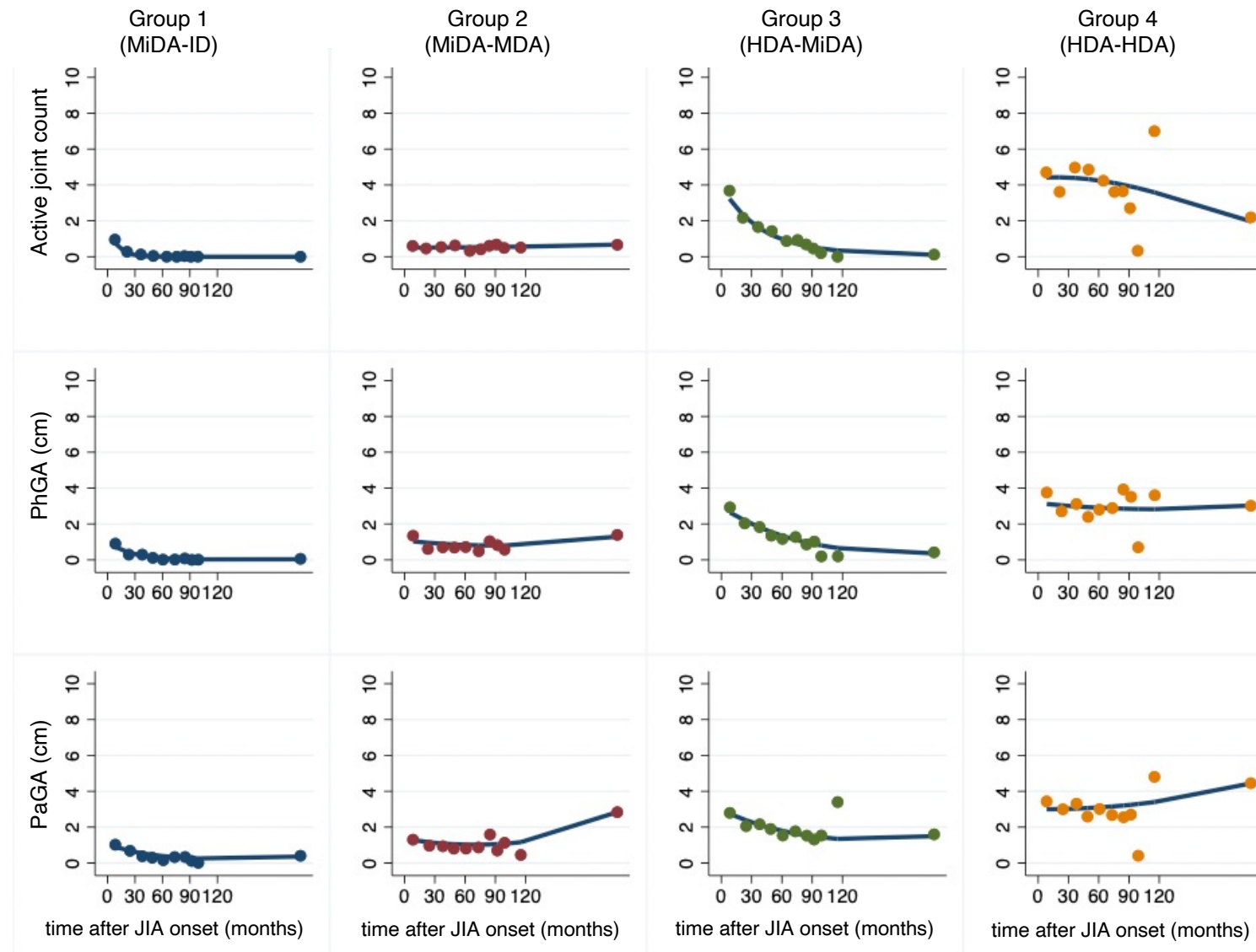
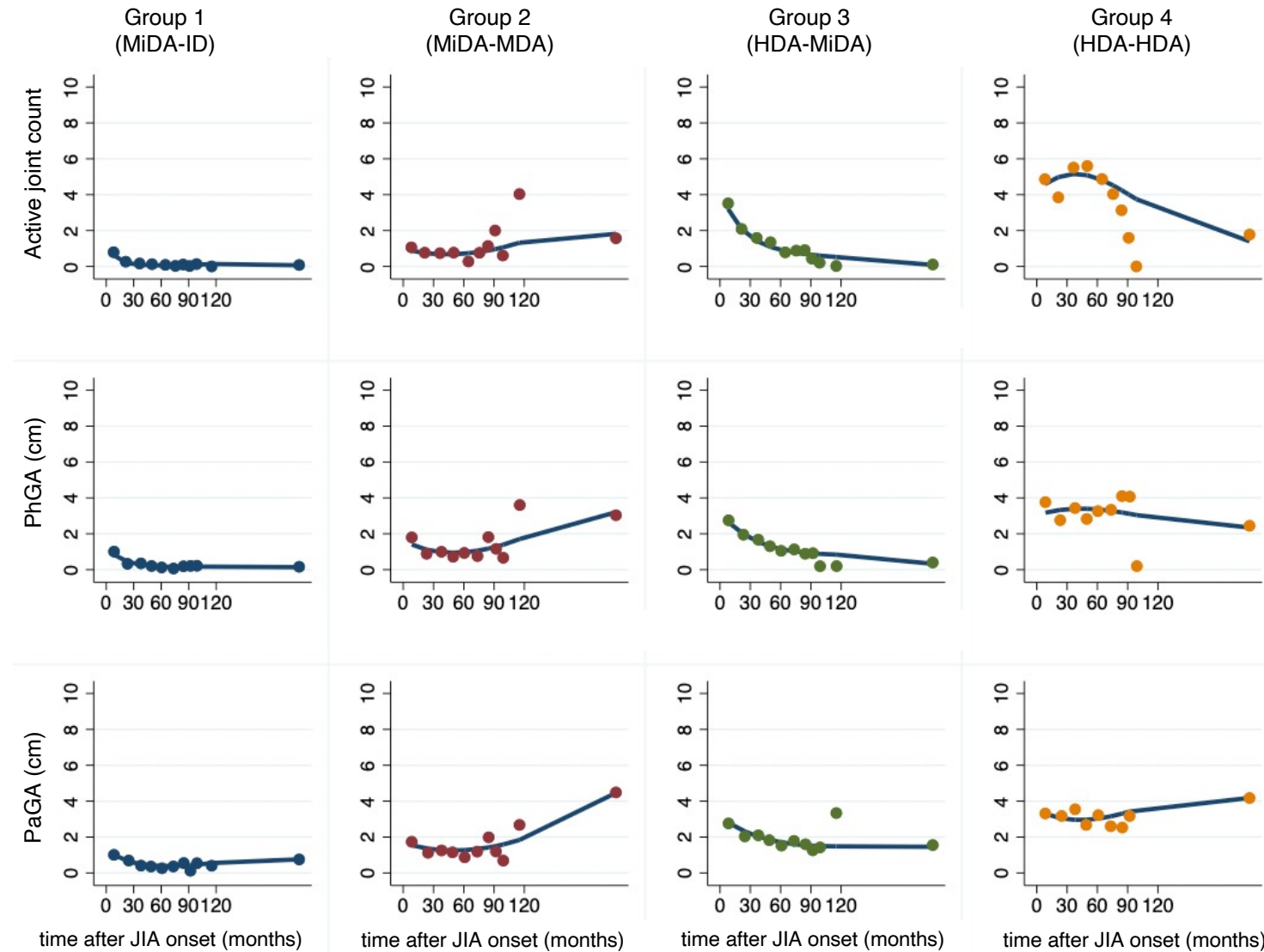


Supplementary Figure S2a. Model trajectories from the traj software. In this case, four groups and first-order (linear) polynomials are used as model specification.



Supplementary Figure S2b. Model trajectories from the traj software. In this case, four groups and second-order (quadratic) polynomials are used as model specification.



Supplementary Figure S2c. Model trajectories from the traj software. In this case, four groups and third-order (cubic) polynomials are used as model specification.