

Prevalence and distribution of peripheral musculoskeletal manifestations in spondyloarthritis including psoriatic arthritis: results of the worldwide, cross-sectional ASAS-PerSpA study.

SUPPLEMENTARY MATERIAL

Supplementary Table S1. Final number of patients per country and per region.

Country	Number of patients N = 4465	Region	Number of patients
Argentina	214	Latin America	538 (12.0%)
Chile	68		
Mexico	217		
Colombia	39		
France	305	Europe and North America	1677 (37.6%)
Spain	208		
Germany	302		
Netherlands	129		
Romania	132		
Portugal	191		
Hungary	100		
Italy	200		
US	98		
Canada	12		
UK	0		
India	209	Asia	975 (21.8%)
Japan	197		
China	167		
Taiwan	202		
South Korea	200		
Egypt	288	Middle East and North Africa	1275 (28.6%)
Morocco	285		
Lebanon	213		
Turkey	489		

Supplementary Table S2. Socio-demographics and clinical characteristics, disease activity and disease burden with regard to the geographic area.

	Latin America N = 538	Europe and North America N = 1677	Asia N = 975	Middle East and North Africa N = 1275
Age, mean (SD)	46.2 (13.8)	47.7 (13.6)	40.7 (14.7)	42.3 (12.8)
Gender (men)	61.7%	58.7%	72.2%	55.2%
BMI (Kg/m ²), mean (SD)	27.2 (4.9)	27.0 (5.7)	23.8 (4.5)	27.0 (5.3)
Ever smoker	38.8%	911/1673 (54.5%)	35.1%	34.4%
Ever alcohol	44.2%	875/1674 (52.3%)	44.4%	20.9%
University education	217/537 (40.4%)	600/1674 (35.8%)	55.3%	36.0%
Fibromyalgia (rheumatologist's opinion)	29/537 (5.4%)	159/1676 (9.5%)	1.8%	15.2%
Fibromyalgia (FiRST)	127/527 (24.1%)	343/1584 (21.7%)	101/856 (11.8%)	204/1160 (17.6%)
Diagnosis				
- axSpA	51.3%	60.3%	62.6%	64.4%
- pSpA	6.5%	6.1%	14.2%	12.4%
- PsA	32.7%	29.2%	16.9%	15.9%
- ReA + IBD	4.6%	2.4%	3.5%	5.4%
- Juv-SpA + others	4.8%	2.0%	2.9%	1.9%
Symptom duration (years), mean (SD)	15.3 (11.2)	17.5 (12.5)	11.3 (9.8)	12.1 (9.6)
Diagnosis delay (years), mean (SD)	7.5 (9.2)	7.2 (9.6)	5.3 (8.0)	5.7 (7.4)
HLA-B27 positive	238/397 (59.9%)	818/1234 (66.3%)	623/775 (80.4%)	387/714 (54.2%)
First or second-degree relatives of SpA*	29.4%	38.0%	29.5%	35.1%
Axial involvement (according to the rheumatologist)	66.4%	75.7%	82.1%	78.6%
Sacroiliitis on x-ray	240/473 (50.7%)	857/1539 (55.7%)	618/936 (66.0%)	802/1212 (66.2%)
Uveitis ever	19.1%	17.6%	17.6%	13.2%
IBD ever (confirmed by endoscopy)	5.4%	6.1%	3.0%	7.8%
Psoriasis ever (confirmed by a Dermatologist)	178/537 (33.1%)	31.4%	20.0%	16.7%
csDMARDs ever	86.8%	60.0%	74.7%	61.6%
bDMARDs ever	52.6%	67.4%	52.1%	56.9%
Current csDMARDs	53.9%	29.3%	44.8%	31.3%
Current bDMARDs	33.5%	56.2%	38.3%	46.4%
NSAIDs alone	22.1%	21.6%	24.2%	26.3%
CRP mg/L, mean (SD)	22.7 (49.5)	6.9 (13.4)	13.8 (28.5)	12.7 (23.1)
CRP ≥6 mg/L	284/525 (54.1%)	540/1673 (32.3%)	428/973 (44.0%)	634/1265 (50.1%)
ASDAS-CRP, mean (SD)	2.9 (1.3)	2.4 (1.1)	2.4 (1.1)	2.6 (1.1)

ASDAS-CRP <1.3	60/523 (11.5%)	319/1642 (19.4%)	178/973 (18.3%)	164/1264 (13.0%)
ASDAS-CRP <2.1	155/523 (29.6%)	711/1642 (43.3%)	435/973 (44.7%)	424/1264 (33.5%)
PGA, mean (SD)	4.6 (3.0)	4.2 (2.7)	4.0 (2.5)	4.7 (2.6)
BASDAI, mean (SD)	4.4 (2.8)	3.9 (2.4)	3.4 (2.3)	3.9 (2.3)
BASFI, mean (SD)	3.8 (3.0)	3.1 (2.6)	2.1 (2.4)	3.2 (2.6)
ASAS-HI, mean (SD)	7.3 (4.9)	6.5 (4.4)	6.2 (4.7)	6.7 (4.6)
PERIPHERAL MANIFESTATIONS				
Peripheral joint disease in the past	79.9%	52.8%	61.4%	49.2%
Peripheral joint disease in the past confirmed by specific investigations	73.4%	48.1%	53.1%	45.1%
Root joints involvement in the past	49.1%	17.5%	57.4%	30.3%
Mid foot arthritis (tarsitis) in the past	23.6%	5.0%	9.1%	3.5%
Mid foot arthritis (tarsitis) in the past confirmed by specific investigations	4.1%	2.3%	2.8%	1.0%
Any enthesitis in the past	68.8%	37.1%	47.7%	41.3%
Any enthesitis in the past confirmed by specific investigations	24.3%	16.7%	16.2%	15.5%
Dactylitis in the past	25.5%	14.2%	17.1%	11.2%
Number of current swollen joints, mean (SD)	1.4 (3.0)	0.5 (1.8)	0.9 (2.8)	0.9 (4.6)
Any current swollen joint	189/536 (35.3%)	269/1675 (16.1%)	23.4%	19.8%
Number of current tender joints, mean (SD)	4.2 (8.2)	1.8 (4.5)	2.2 (5.9)	2.9 (6.7)
Any current tender joint	328/536 (61.2%)	604/1675 (36.1%)	38.6%	54.0%
Current MEI score, mean (SD)	5.2 (9.9)	1.4 (4.2)	1.1 (3.8)	3.6 (6.8)
Number of current enthesitis according to the MEI†, mean (SD)	1.6 (3.6)	0.3 (1.4)	0.2 (1.3)	1.0 (2.2)
Any current enthesitis according to the MEI†	175/536 (32.6%)	182/1675 (10.9%)	7.6%	28.2%
Any current enthesitis according to the SPARCC Enthesitis Index	133/536 (24.8%)	118/1675 (7.0%)	4.1%	14.0%
Any current enthesitis according to the LEI	94/536 (17.5%)	88/1675 (5.2%)	2.9%	11.8%

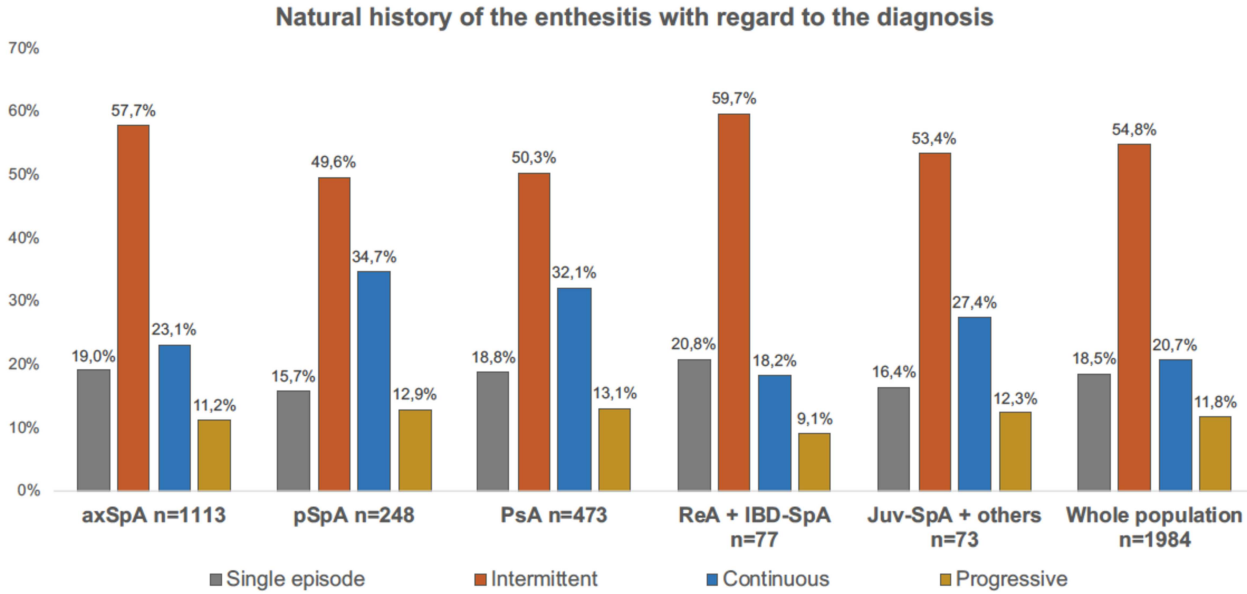
All results are presented as mean (SD) and percentages for continuous and categorical variables, respectively.

*First or second-degree relatives with Ankylosing Spondylitis, psoriasis, uveitis, reactive arthritis or inflammatory bowel disease.

†Enthesis with a score >1 according to the MEI.

ASAS-HI: ASAS Health Index; ASDAS-CRP: Ankylosing Spondylitis Disease Activity Score; AxSpA: axial Spondyloarthritis; BASDAI: Bath Ankylosing Disease Activity Index; BASFI: Bath Ankylosing Spondylitis Functional Index; bDMARDs: biological disease-modifying antirheumatic drugs; BMI: body mass index; CRP: C-reactive protein; csDMARDs: conventional synthetic disease-modifying antirheumatic drugs; FiRST: Fibromyalgia Rapid Screening Tool; IBD: Inflammatory Bowel Disease; IBD-SpA: Inflammatory Bowel Disease associated Spondyloarthritis; Juv-SpA: Juvenile Spondyloarthritis; PGA: Patient's Global Assessment; PsA: Psoriatic Arthritis; pSpA: peripheral Spondyloarthritis; ReA: Reactive Arthritis; SD: Standard Deviation; SPARCC Enthesitis Index

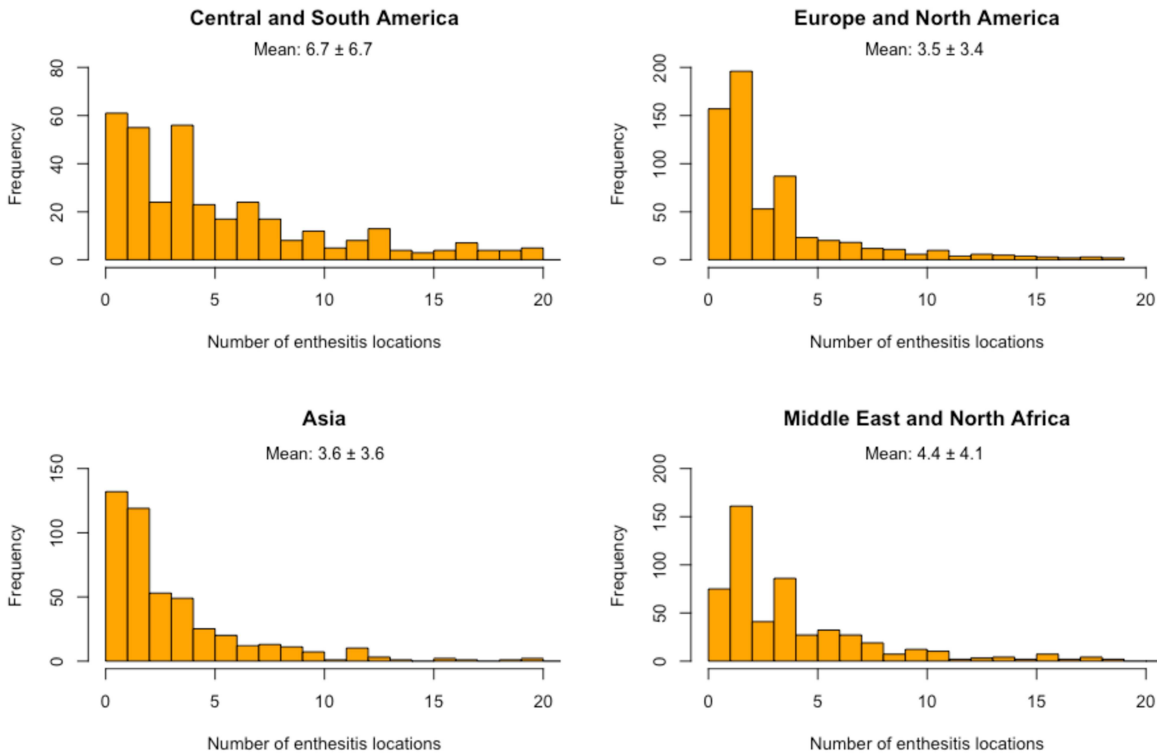
Supplementary Figure S1. Natural history of the enthesitis in the past with regard to the diagnosis*.

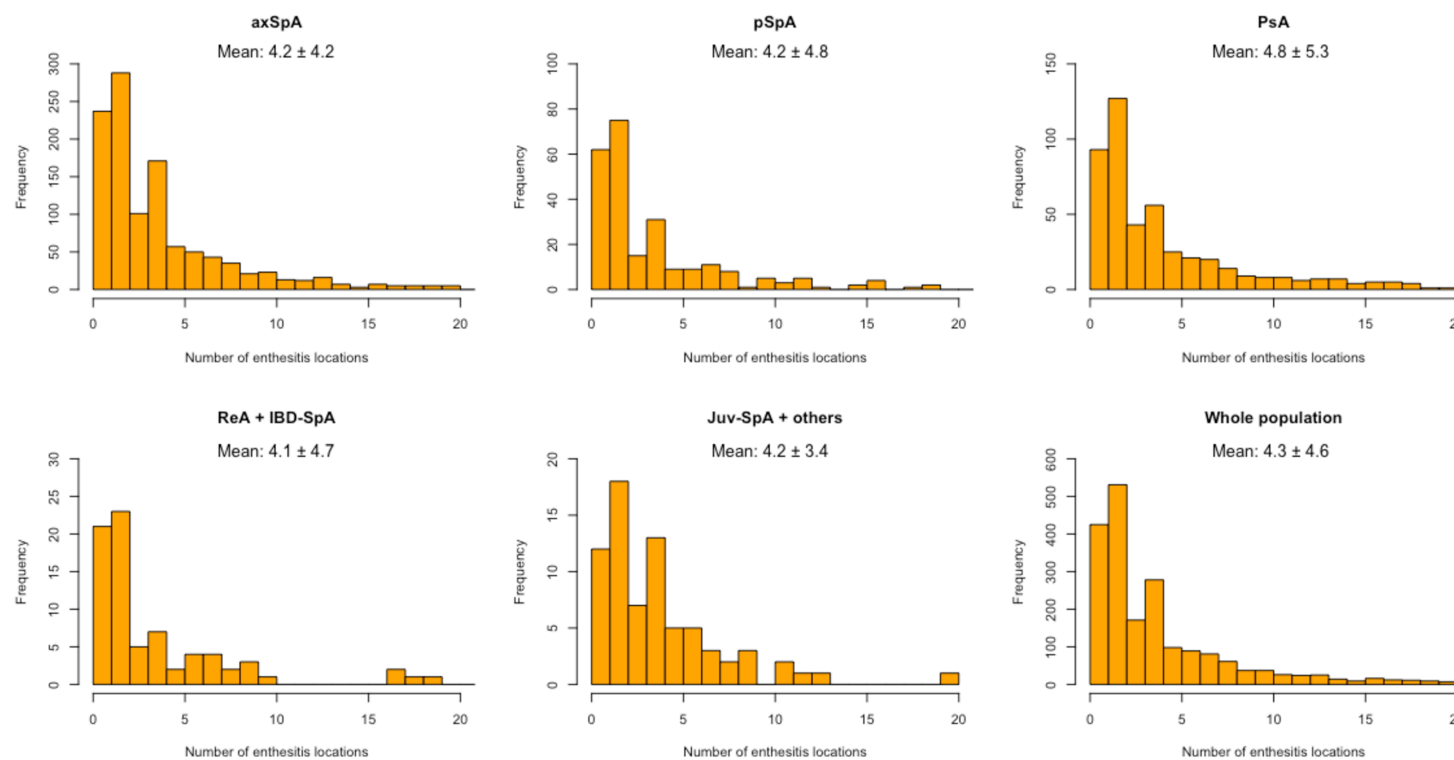


*Among patients with enthesitis in the past (n = 1984).

AxSpA: axial Spondyloarthritis; IBD-SpA: Inflammatory Bowel Disease associated Spondyloarthritis; Juv-SpA: Juvenile Spondyloarthritis; PsA: Psoriatic Arthritis; pSpA: peripheral Spondyloarthritis; ReA: Reactive Arthritis.

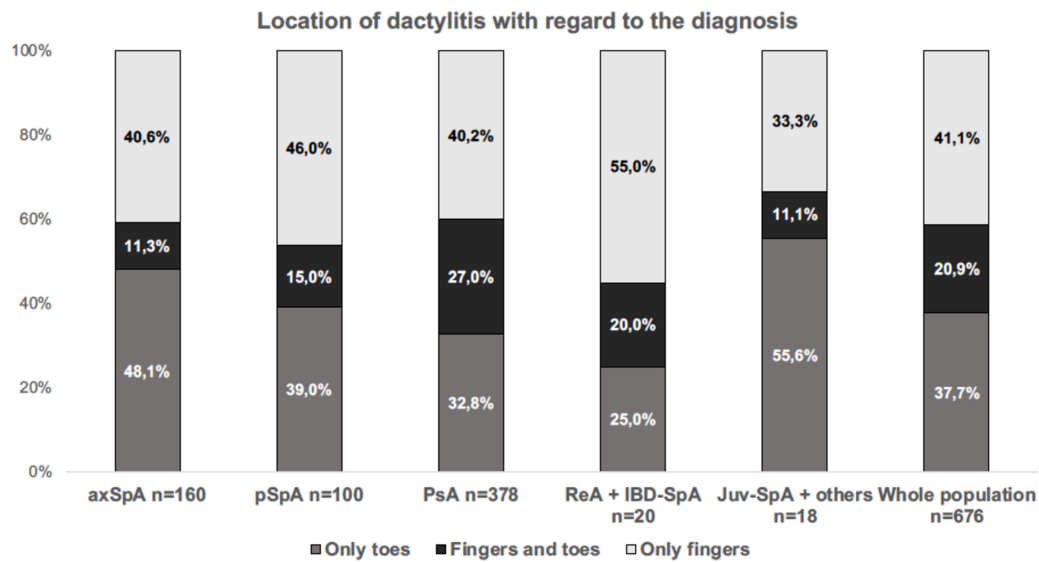
Supplementary Figure S2. Number of locations of all episodes of enthesitis in the past with regard to the geographic area*.



Supplementary Figure S3. Number of locations of all episodes of enthesitis in the past with regard to the diagnosis*.

axSpA: axial Spondyloarthritis; IBD-SpA: Inflammatory Bowel Disease associated Spondyloarthritis; Juv-SpA: Juvenile Spondyloarthritis; PsA: Psoriatic Arthritis; pSpA: peripheral Spondyloarthritis; ReA: Reactive Arthritis.

Supplementary Figure S4. Location of the dactylitis in the past with regard to the diagnosis*.



*Among patients with dactylitis in the past and available data concerning the location (n = 676).
AxSpA: axial Spondyloarthritis; IBD-SpA: Inflammatory Bowel Disease associated Spondyloarthritis; Juv-SpA: Juvenile Spondyloarthritis; PsA: Psoriatic Arthritis; pSpA: peripheral Spondyloarthritis; ReA: Reactive Arthritis.