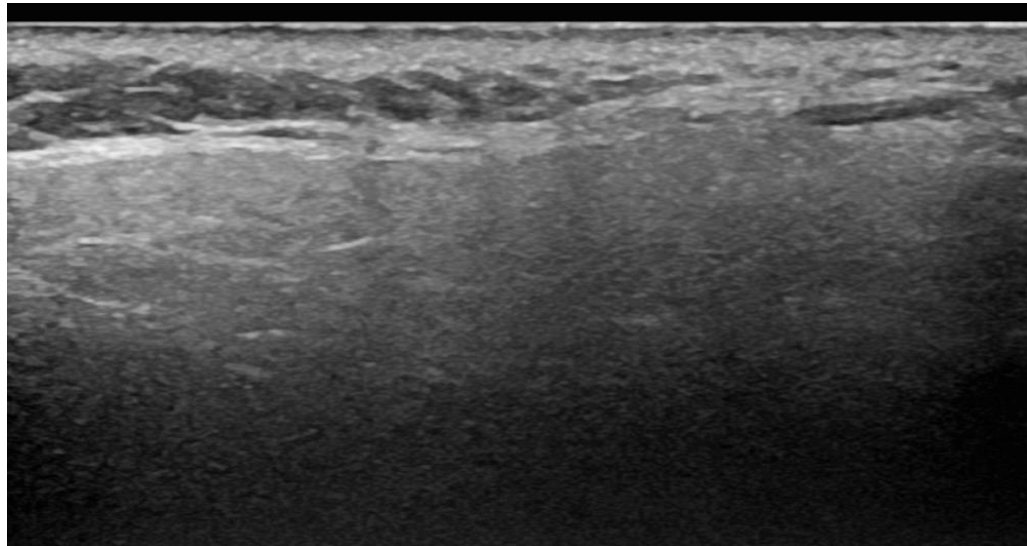
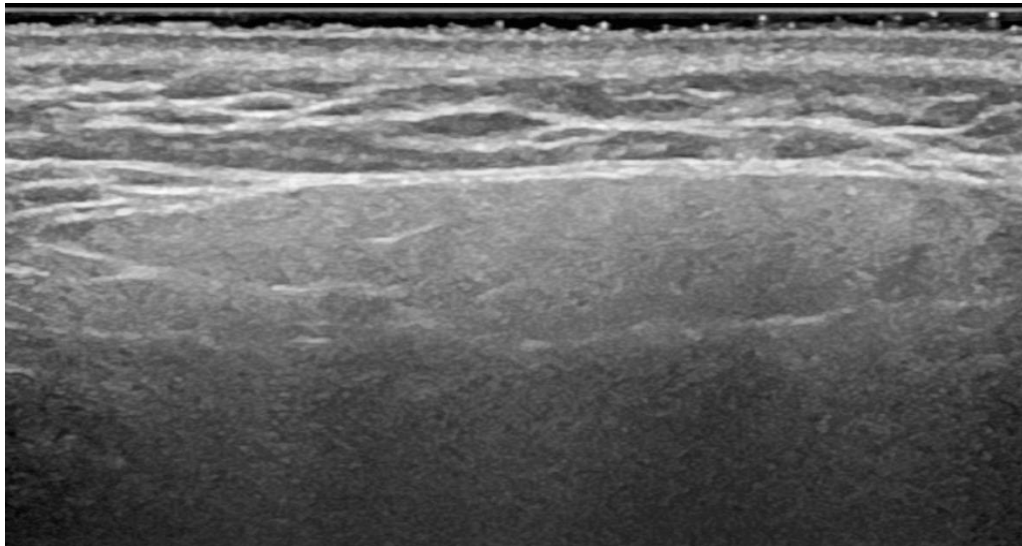
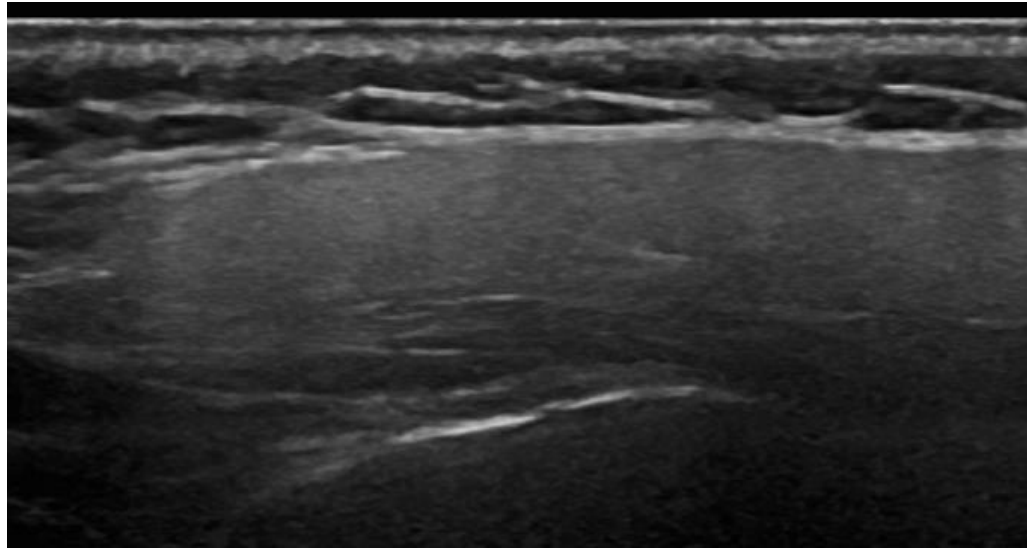
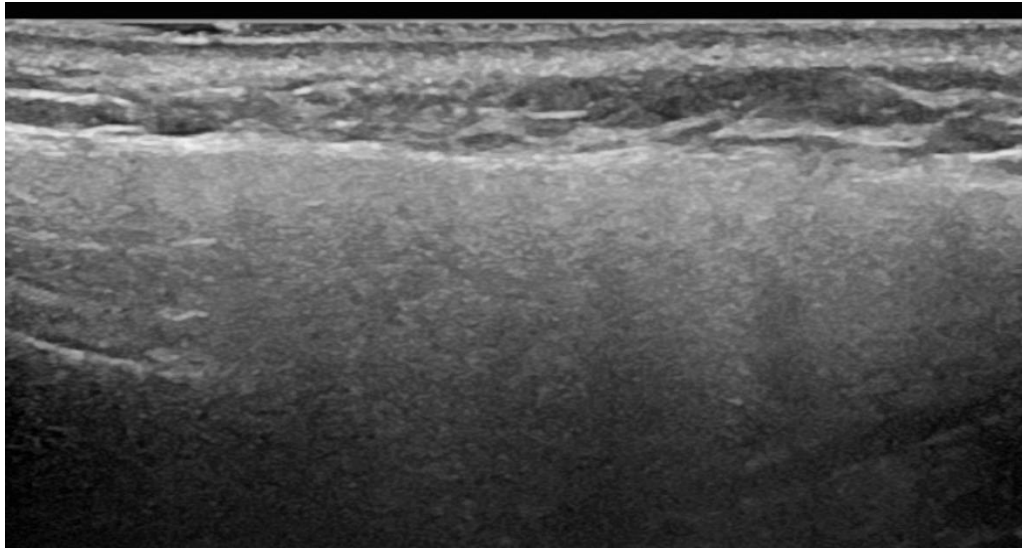


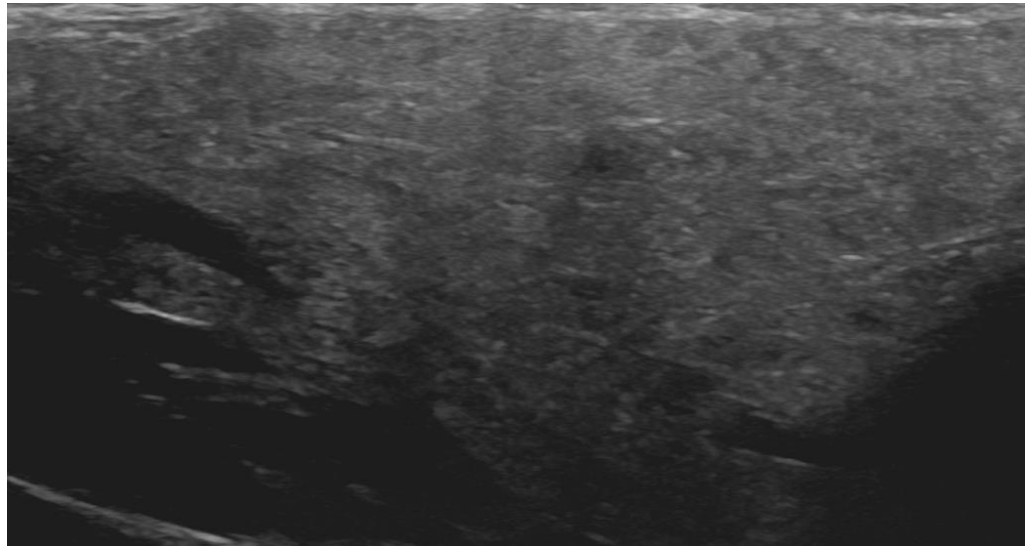
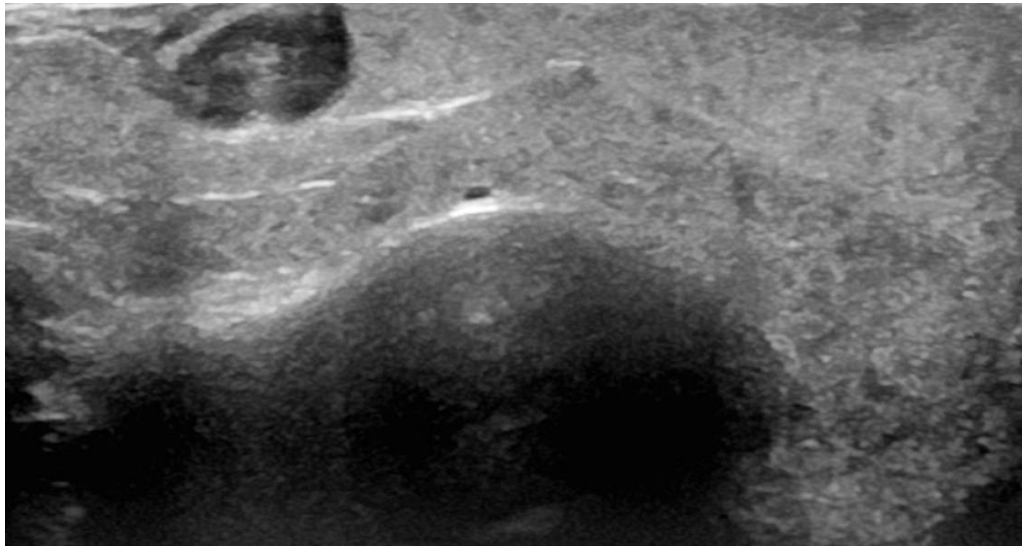
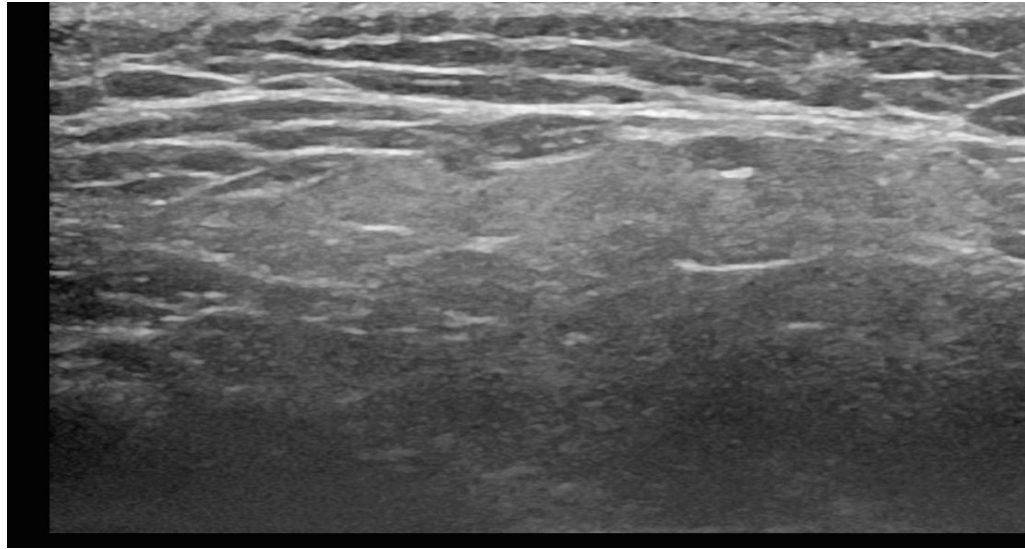
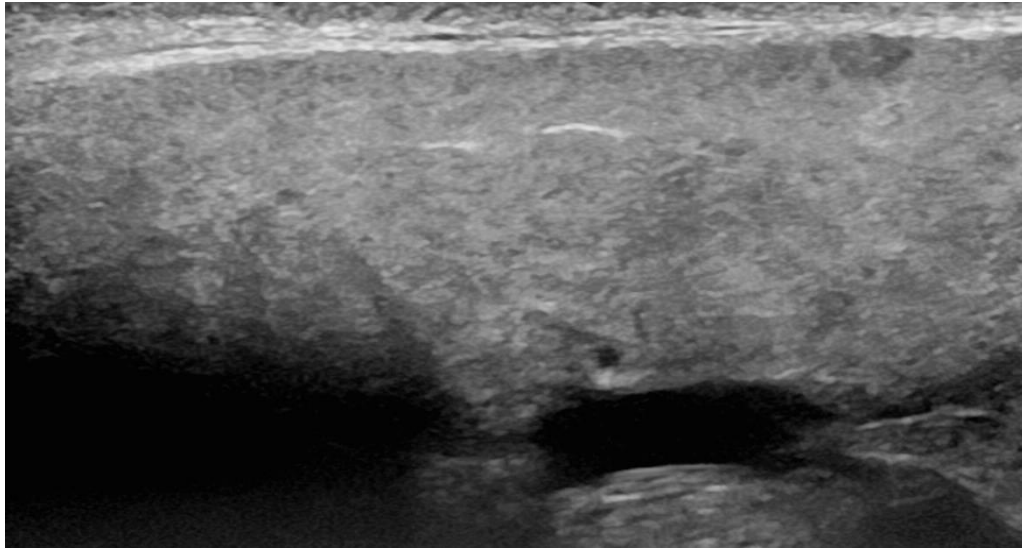
# Atlas for the OMERACT salivary gland ultrasound scoring system

Supplementary material to: "Application of the OMERACT ultrasound scoring system for salivary glands in a single-center cohort of patients with suspected Sjögren's syndrome" by Viktoria Fana, Uffe Møller Døhn, Simon Krabbe and Lene Terslev

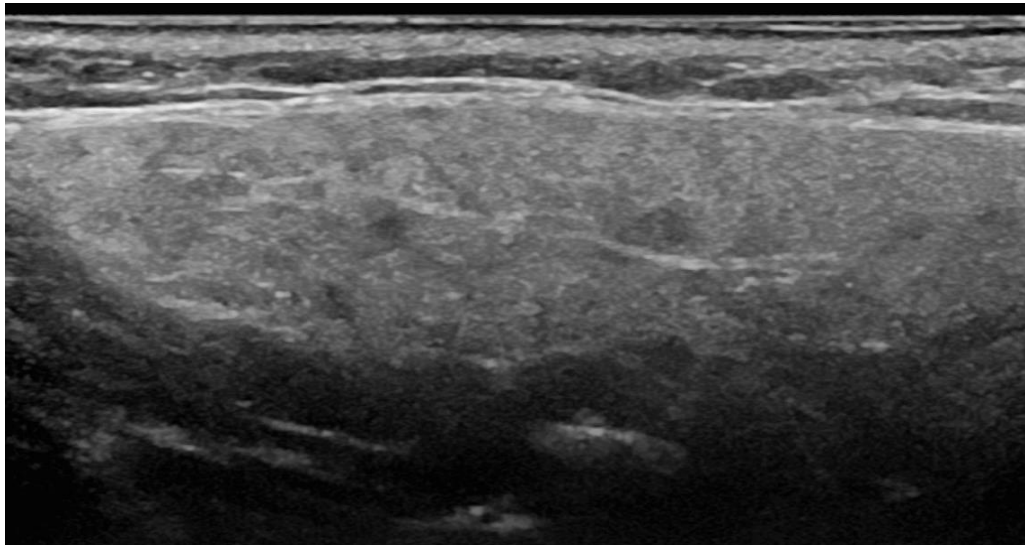
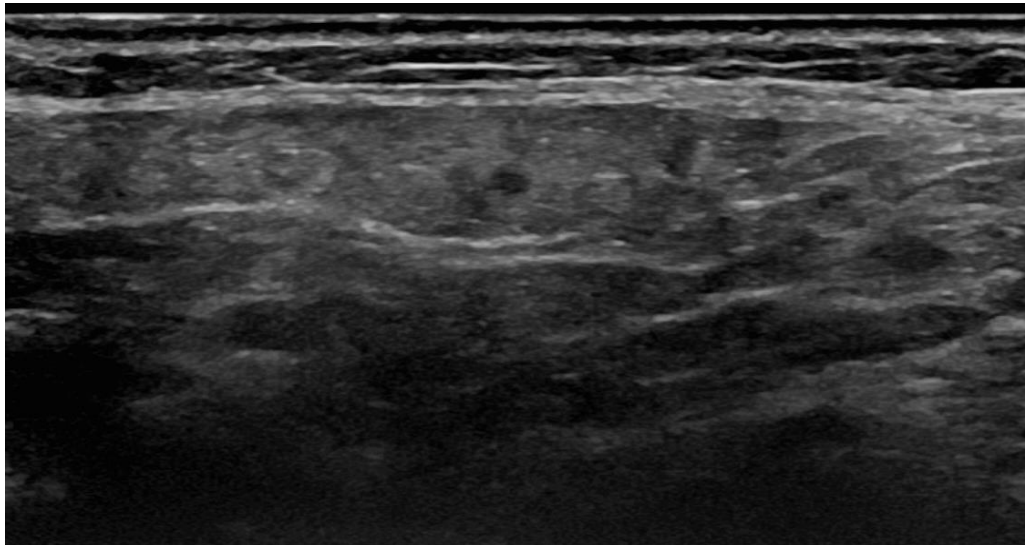
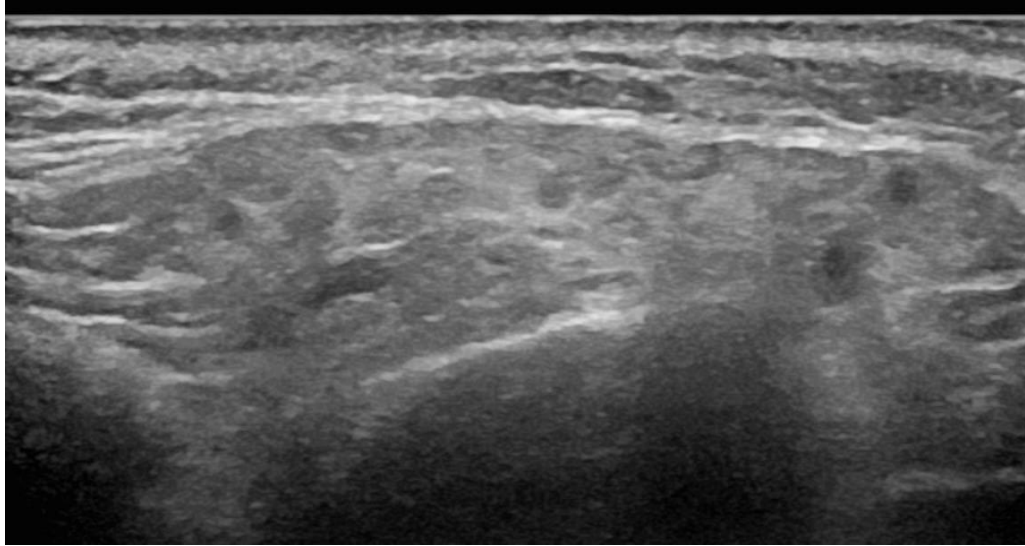
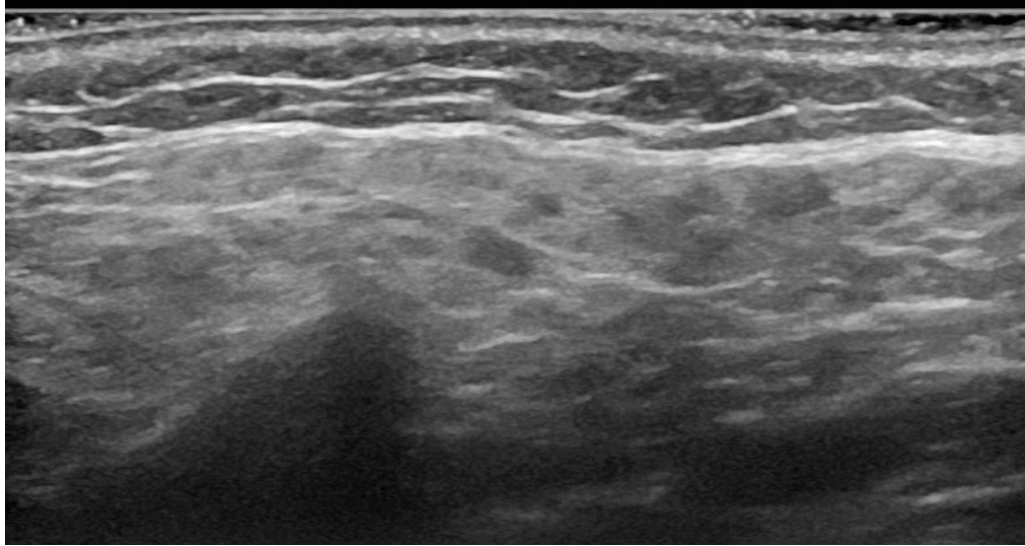
Parotid salivary gland. Grade 0, Normal parenchyma.



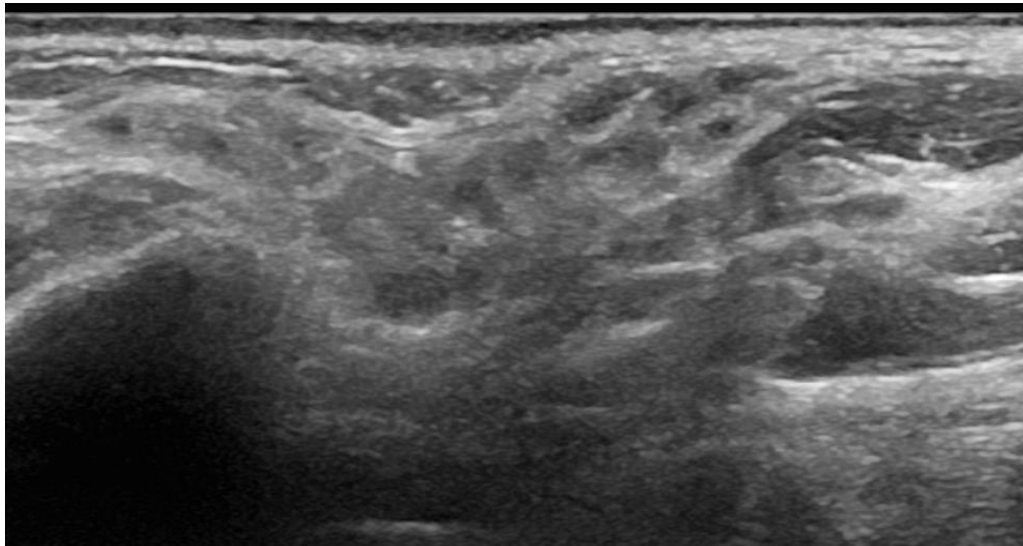
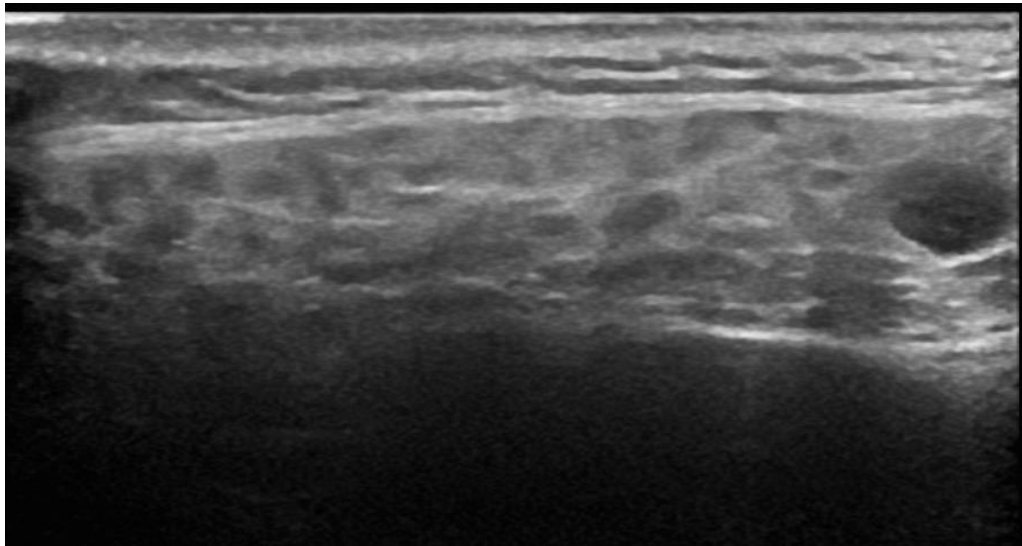
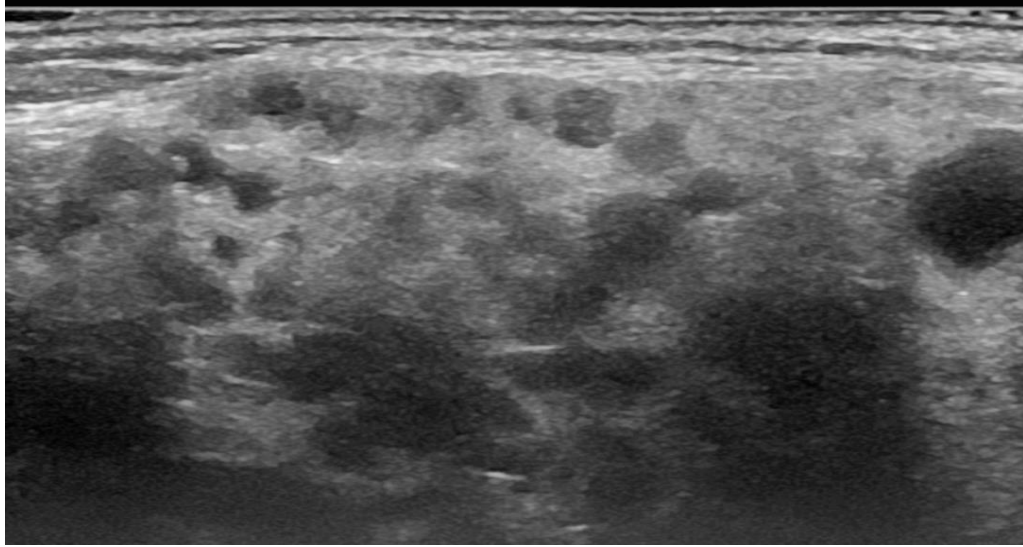
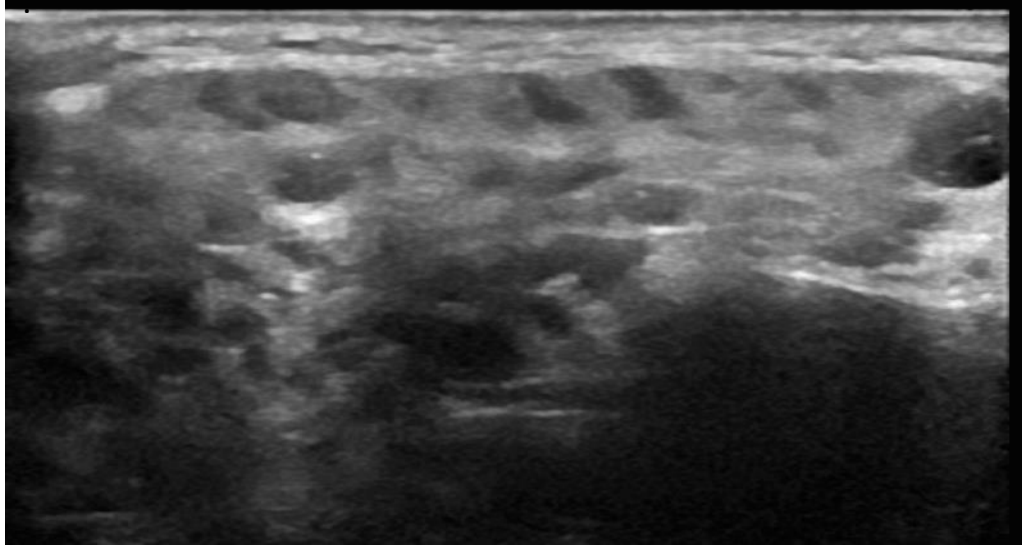
Parotid salivary gland. Grade 1, Minimal change: mild inhomogeneity without anechoic/hypoechoic areas and hyperechogenic bands.



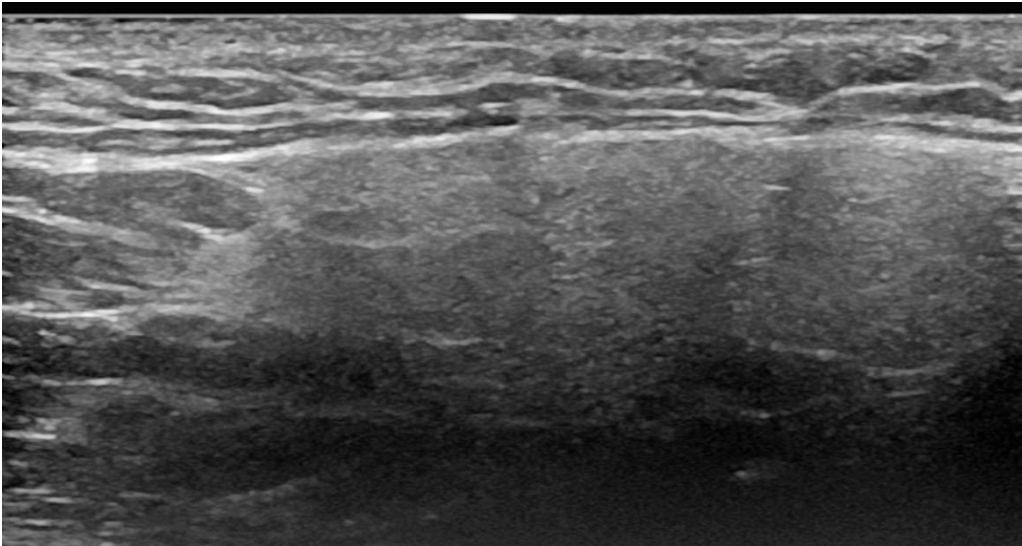
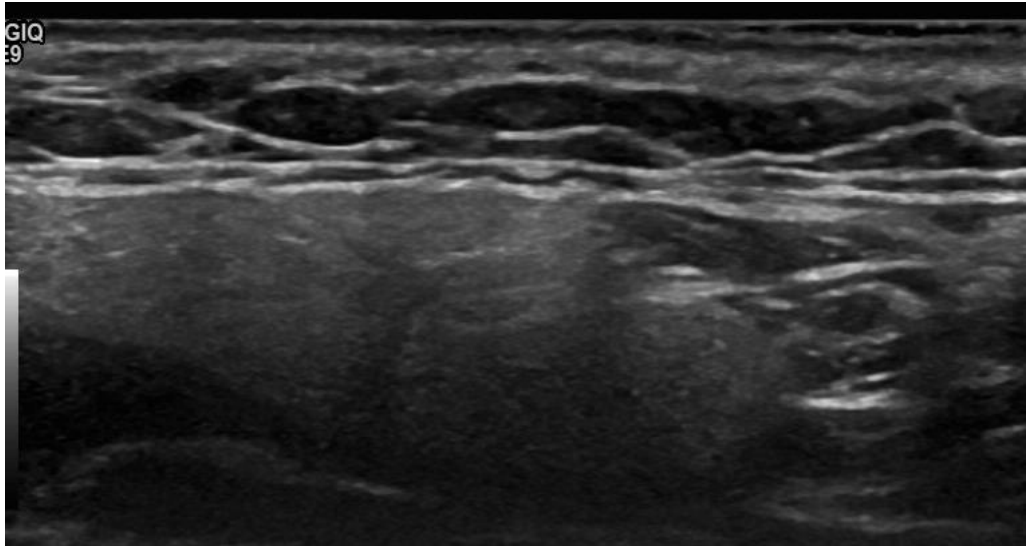
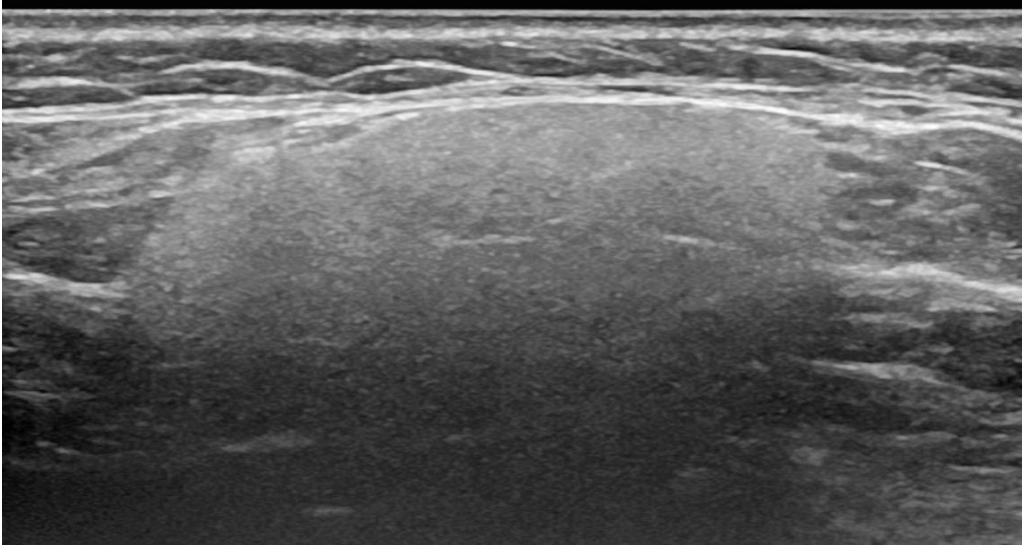
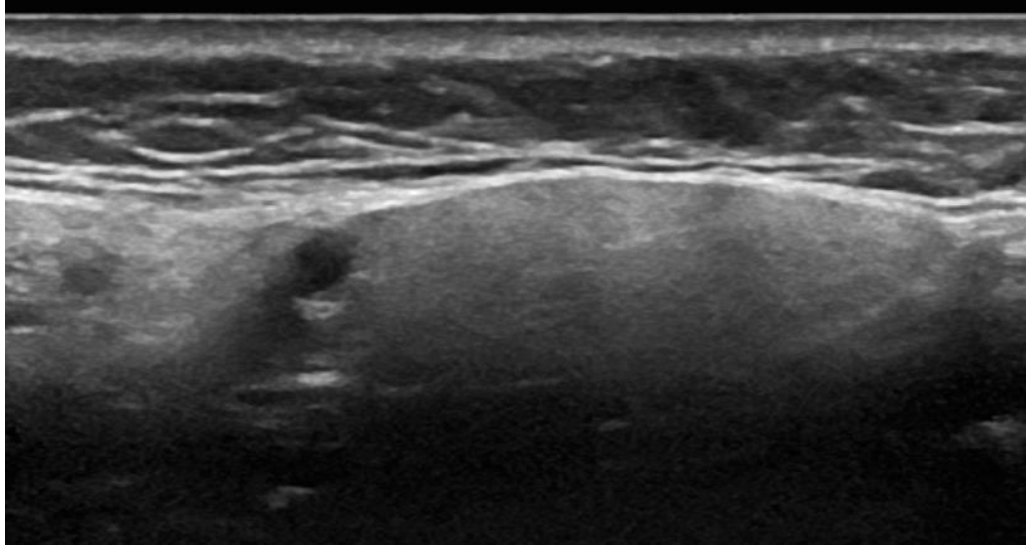
Parotid salivary gland. Grade 2, Moderate change: moderate inhomogeneity with focal anechoic/hypoechoic areas.



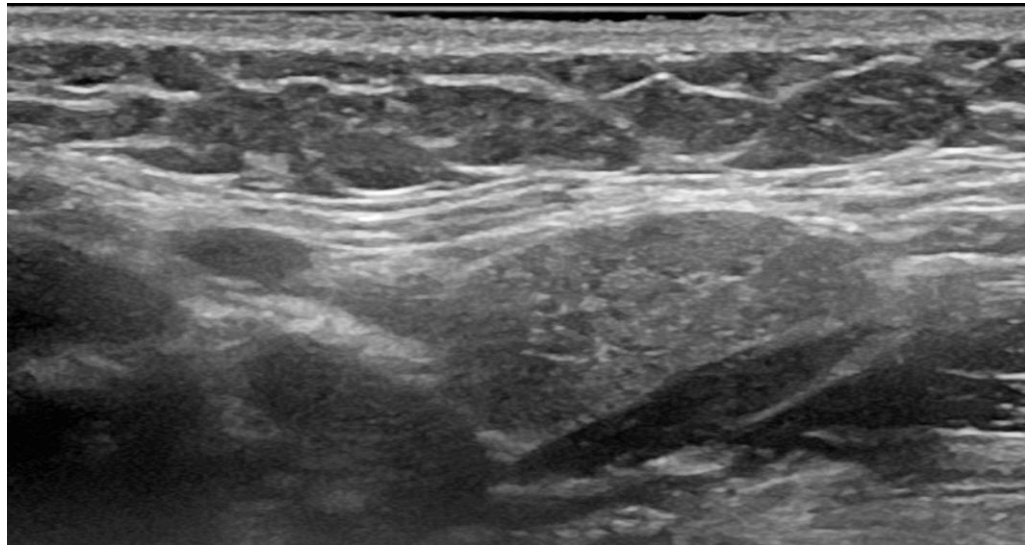
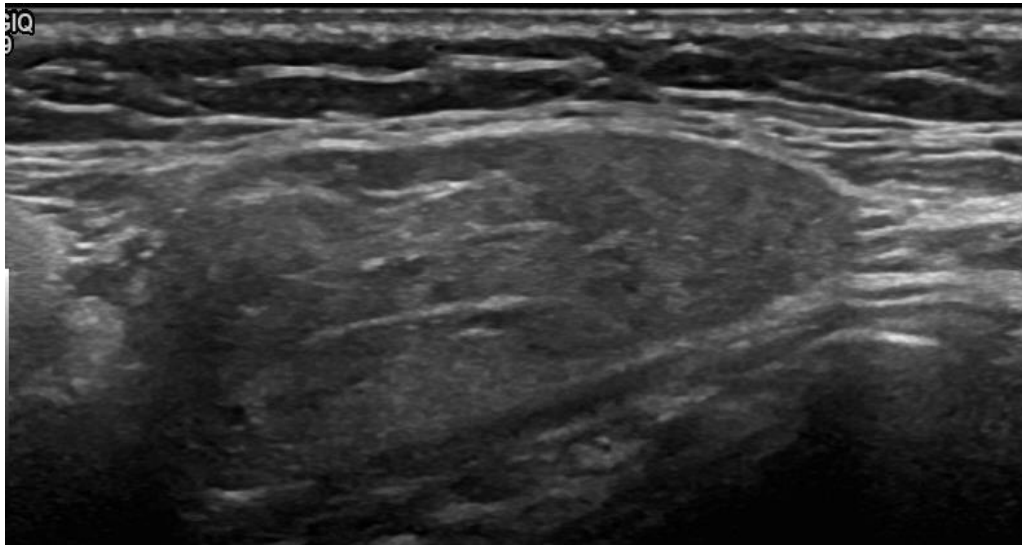
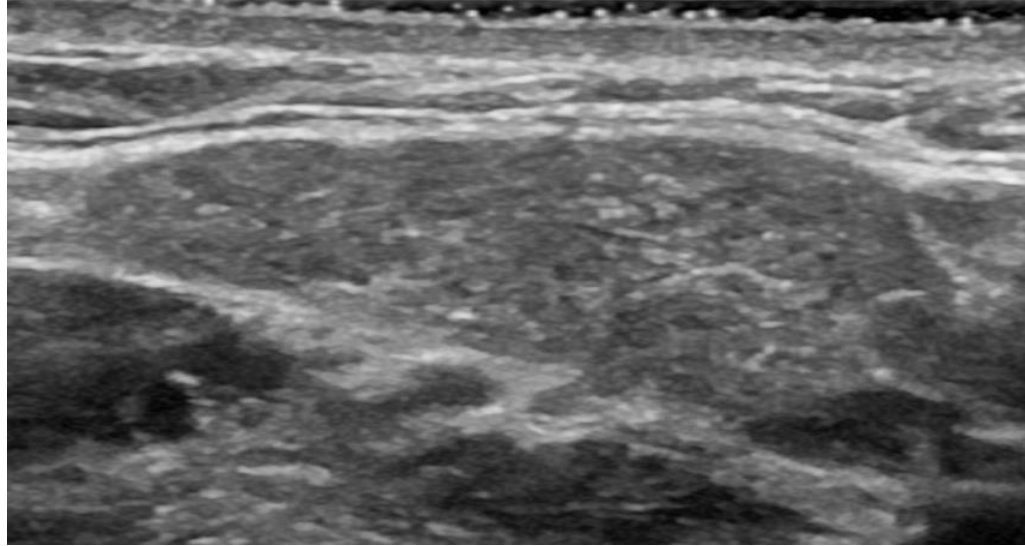
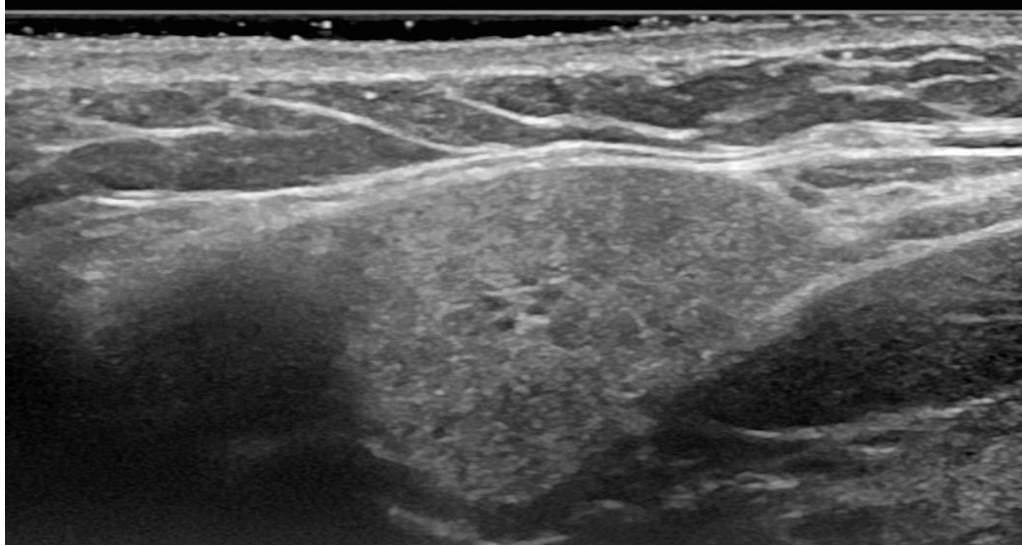
Parotid salivary gland. Grade 3, Severe change: diffuse inhomogeneity with anechoic/hypoechoic areas occupying the entire gland surface or a fibrous gland.



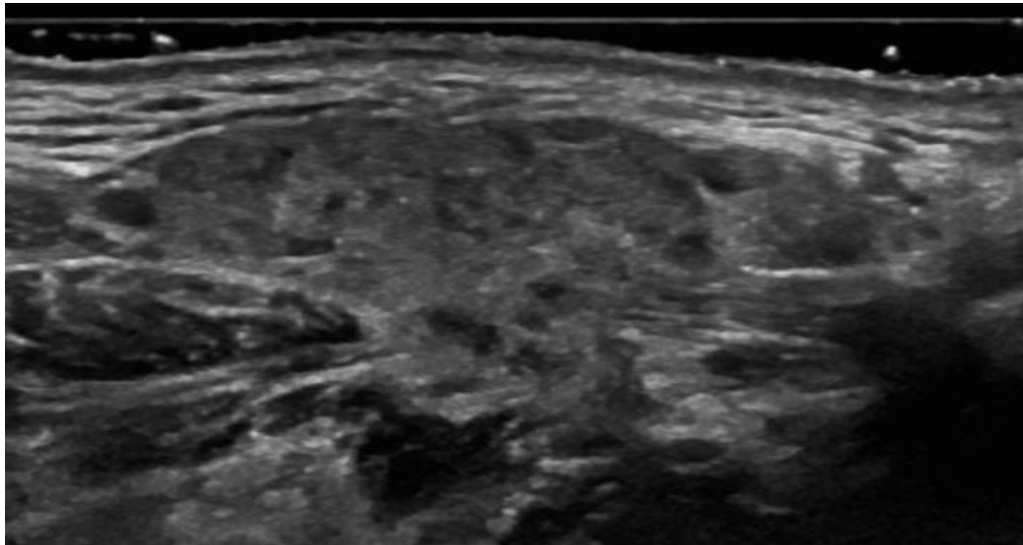
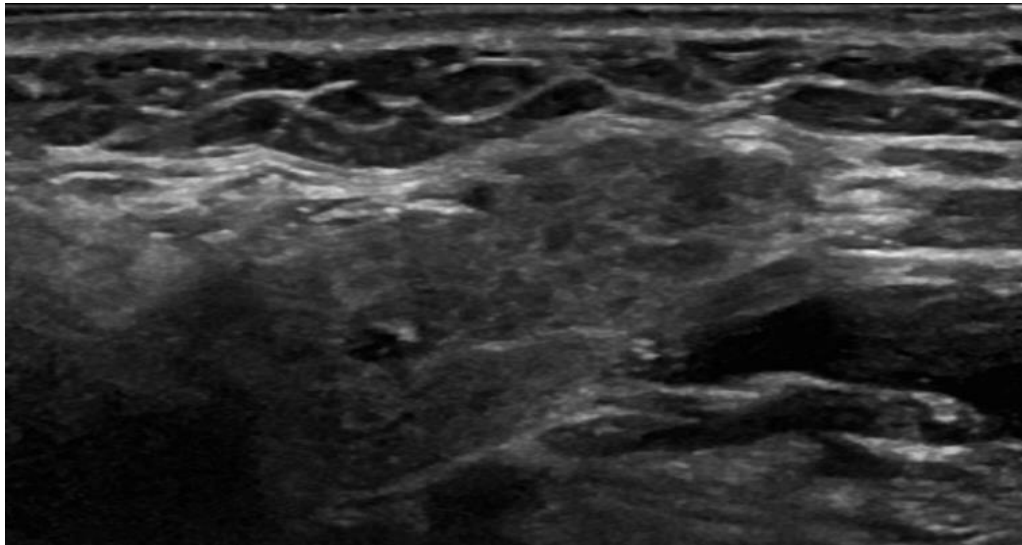
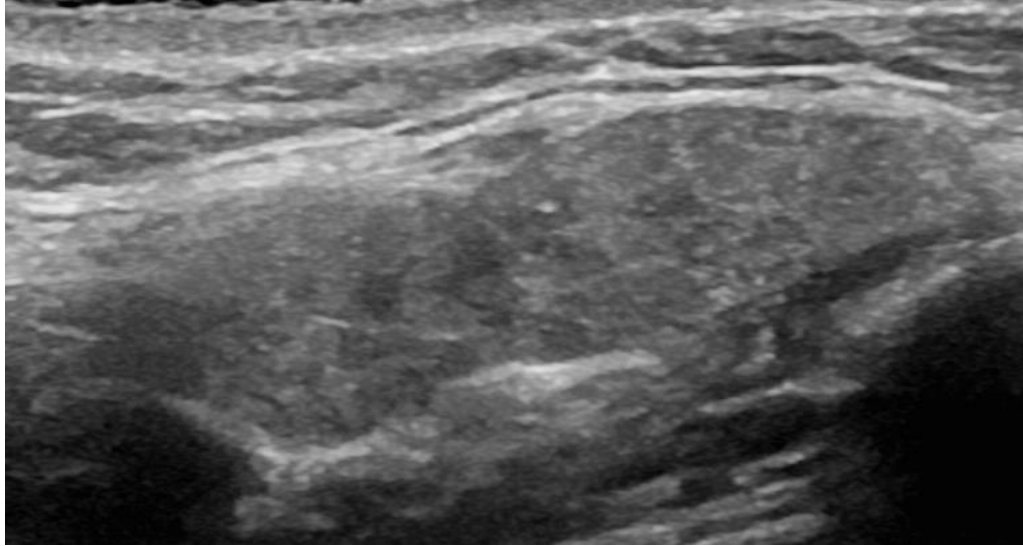
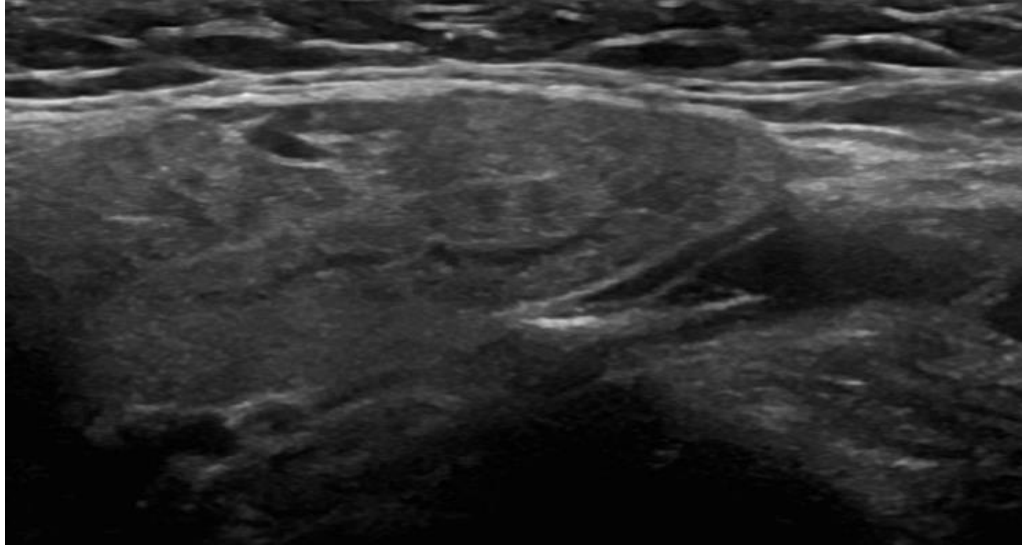
Submandibular salivary gland. Grade 0, Normal parenchyma.



Submandibular salivary gland. Grade 1, Minimal change: mild inhomogeneity without anechoic/hypoechoic areas and hyperechogenic bands.



Submandibular salivary gland. Grade 2, Moderate change: moderate inhomogeneity with focal anechoic/hypoechoic areas.





Submandibular salivary gland. Grade 3, Severe change: diffuse inhomogeneity with anechoic/hypoechoic areas occupying the entire gland surface or a fibrous gland.

