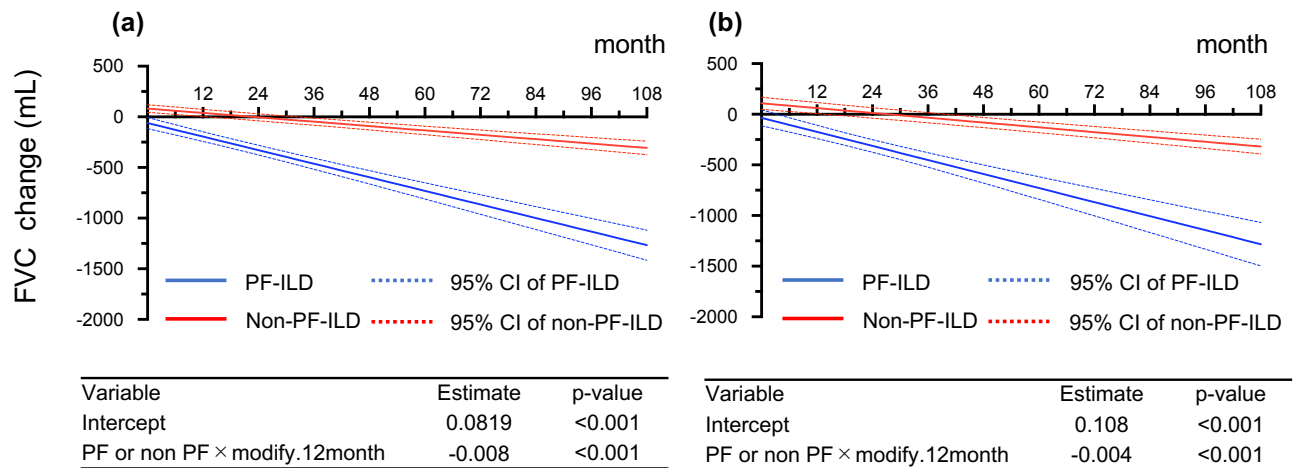


Supplemental Figure S1.



The comparison of FVC between the PF-ILD and non-PF-ILD.

(a) unadjusted, and (b) adjusted change in FVC and groups was analyzed by GEE at calculated time points using IPW with adjustment for the multiple covariates* using propensity scores.

For this analysis, FVC measurements by year were attributed by the nearest measurement using a ± 6 months window.

*Adjustment by age, sex, body mass index, FVC, glucocorticoid use (PSL at ≥ 10 mg/day), differential diagnoses (IPF, autoimmune ILD, and lung-dominant ILD), and high-resolution computed tomography findings (honeycombing and traction bronchiectasis)

Abbreviations: FVC, forced vital capacity; PF-ILD, progressive fibrosing interstitial lung disease; GEE, generalized estimating equation; IPW, inverse probability weighting.